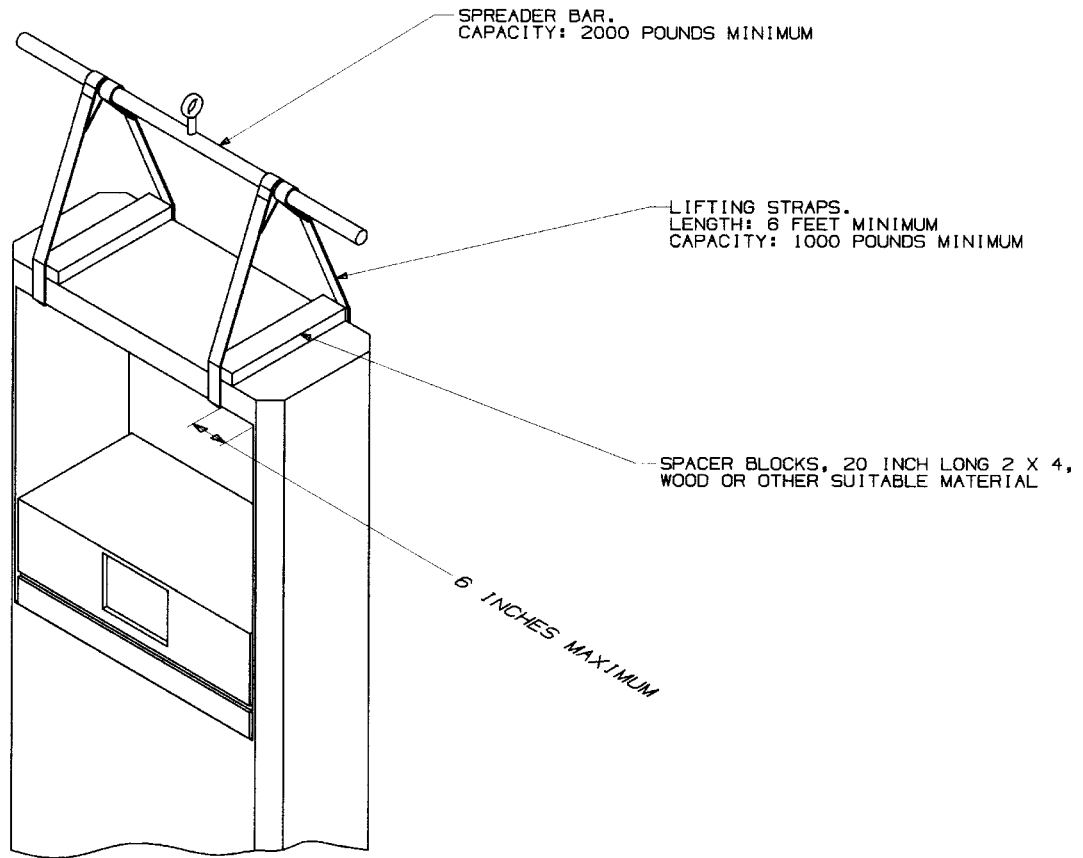


APPENDIX C ENGINEERING DRAWINGS

3/Vista models have different base layouts (footprints) than previous Vista models, however, the field installation wiring in the junction box is the same.

Dispenser drawings appear in this section in the following order:

<u>Model Number</u>	<u>Type</u>	<u>Drawing Number</u>	<u>Description</u>
		1-7196-C	Lifting Instructions
3/V390D, 3/V390D/U	Remote	1-7243-C	Footprint
3/V590D/U, 3/V595D/U	Remote	2-7243-C	Footprint
3/V399D	Remote	3-7243-C	Footprint
3/V490D/U	Remote	4-7243-C	Footprint
3/V387D	Remote	5-7243-C	Footprint
3/V388D, 3/V389D	Remote	6-7243-C	Footprint
3/V580D, 3/V585D	Remote	7-7243-C	Footprint
3/V595D, except D/U	Remote	8-7243-C	Footprint
3/V490D, except D/U	Remote	9-7243-C	Footprint
3/V590D, except D/U	Remote	10-7243-C	Footprint
3/V591D	Remote	11-7243-C	Footprint
3/V590P/U, 3/V595P/U	Suction	9-7193-C	Footprint
3/V390P, 3/V390P/U	Suction	10-7193-C	Footprint
3/V399P	Suction	11-7193-C	Footprint
3/V591P, 3/V595P, except P/U	Suction	12-7193-C	Footprint
3/V387P	Suction	13-7193-C	Footprint
3/V389P	Suction	14-7193-C	Footprint
3/V580P, 3/V585P	Suction	15-7193-C	Footprint
3/V390D, except D/U	Remote	1-7157-C	Wiring Diagram
3/V389D, 3/V399D	Remote	2-7157-C	Wiring Diagram
3/V490D	Remote	3-7157-C	Wiring Diagram
Blenders, except 591D, 595D	Remote	4-7157-C	Wiring Diagram
3/V387D	Remote	5-7157-C	Wiring Diagram
3/V591D, 3/V595D, except D/U	Remote	10-7157-C	Wiring Diagram
3/V390D/U	Remote	13-7157-C	Wiring Diagram
3/V390P	Suction	6-7157-C	Wiring Diagram
3/V389P, 3/V399P	Suction	9-7157-C	Wiring Diagram
3/V590P/U, 3/V595P/U	Suction	19-7157-C	Wiring Diagram
		-7151-C	Typ Disp Site Wiring
		10196-B	Dimensional Drawing



APPROXIMATE WEIGHTS OF DISPENSERS:

V390 DISPENSER	-----	850 LB
V395 DISPENSER	-----	950 LB
V490 DISPENSER	-----	940 LB
V590 DISPENSER	-----	940 LB
V380 SERIES	-----	500 LB
V585 SERIES	-----	500 LB
V390 SUCTION DISPENSER	--	1175 LB
V399 SUCTION DISPENSER	--	910 LB

LETTER	NO.	DATE	CHANGE	REV BY

ER314B REVISIONS (FORMAT REV. D)

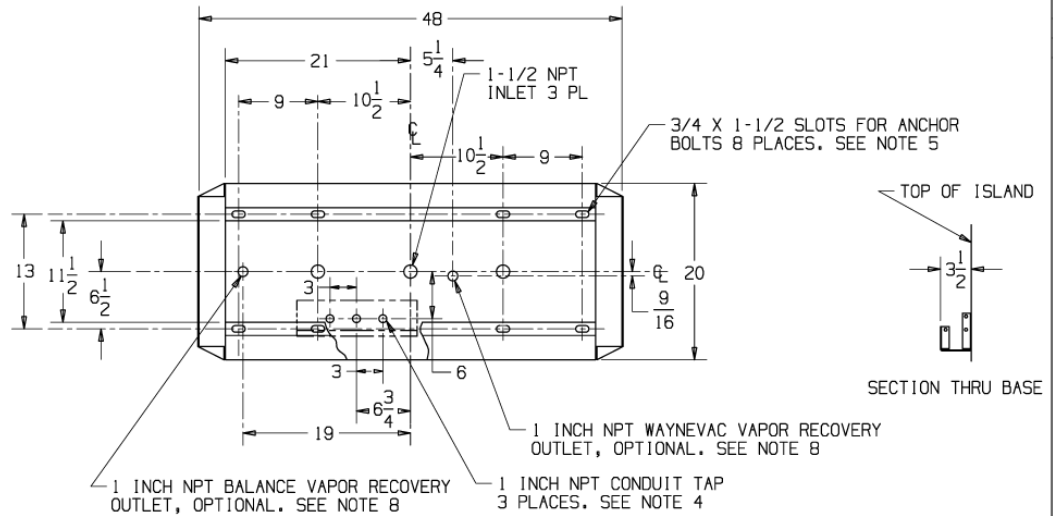
THIS DRAWING IS THE PROPERTY OF THE WAYNE DIVISION, DRESSER INDUSTRIES, INC. IT IS NOT TO BE USED OR REPRODUCED WITHOUT WRITTEN PERMISSION OF THE OWNER AND IT IS NOT TO BE USED IN ANY WAY INCONSISTENT WITH THE PURPOSE FOR WHICH IT IS ISSUED.

SH MET UNFOLD	REF SET	TITLE
NA	NA	LIFTING INSTRUCTIONS, VISTA DISPENSER
DATE	DATE	INITIALS
UNLESS OTHERWISE SPECIFIED DIMENSIONS ARE IN INCHES		
.X = ±.050	ANGLES	
.XX = ±.025	±1°	
.XXX = ±.010		
DO NOT SCALE DRAWING		
DESIGNED JDD	DATE 11DEC97	SCALE NONE
DRAWN DAB		
CHECKED ROB		
APPROVED GMO		1-7196-C

Figure C-1. 1-7196-C Vista Field Lifting Instruction

NOTES:

1. ALL PIPING AND ELECTRICAL INSTALLATIONS MUST CONFORM TO ALL APPLICABLE REGULATIONS INCLUDING NFPA30, FLAMMABLE & COMBUSTIBLE LIQUIDS CODE; NFPA30A, AUTOMOTIVE & MARINE SERVICE STATION CODE; NFPA70, NATIONAL ELECTRICAL CODE. DO NOT "DAISY CHAIN" THE DISPENSER POWER CIRCUIT TO ANY OTHER EQUIPMENT.
2. PIPING FROM TANK TO DISPENSER SHOULD SLOPE UPWARDS TO AVOID AIR OR LIQUID TRAPS.
3. USE UNIVERSAL JOINTS AT DISPENSER TO ALLOW FOR GROUND MOVEMENT.
4. USE ANY OR ALL CONDUIT TAPS SHOWN TO MAKE ELECTRICAL CONNECTIONS TO DISPENSER.
5. FIRMLY MOUNT THE DISPENSER TO THE ISLAND USING THE ANCHOR BOLT LOCATIONS SHOWN. SEE ANCHORING DETAIL. USE OF ALL ANCHORING LOCATIONS RECOMMENDED.
6. EMERGENCY SHUTOFF VALVES AND BREAKAWAY DEVICES ARE EXAMPLES OF REQUIREMENTS STATED IN THE NFPA30A AUTOMOTIVE & MARINE SERVICE STATION CODE. THESE, AS WELL AS ANY OTHER SAFETY DEVICES REQUIRED BY NFPA30 & 30A, MUST BE INSTALLED AND MAINTAINED PER THE MANUFACTURER'S INSTRUCTIONS.
7. OPTIONAL SPEAKER INSTALLATION WIRING IS LOCATED IN JUNCTION BOX. CONNECT INTERCOM CIRCUIT TO A LISTED CLASS 2 POWERED INTERCOM ONLY WITH 18 GAUGE MINIMUM, AT LEAST 90 DEGREE C, 600 V GAS & OIL RESISTANT UL LISTED WIRE. WIRES BACK TO INTERCOM POWER MUST BE RUN IN SEPARATE DEDICATED LISTED METALLIC CONDUIT.
8. BALANCE VAPOR RECOVERY AND WAYNEVAC VAPOR RECOVERY CONNECTIONS ARE IN DIFFERENT LOCATIONS.



BASE DIMENSIONS

1-1/2" DIA. X 1/8" THICK FENDER WASHER

3/8" ANCHOR BOLT

ANCHORING DETAIL



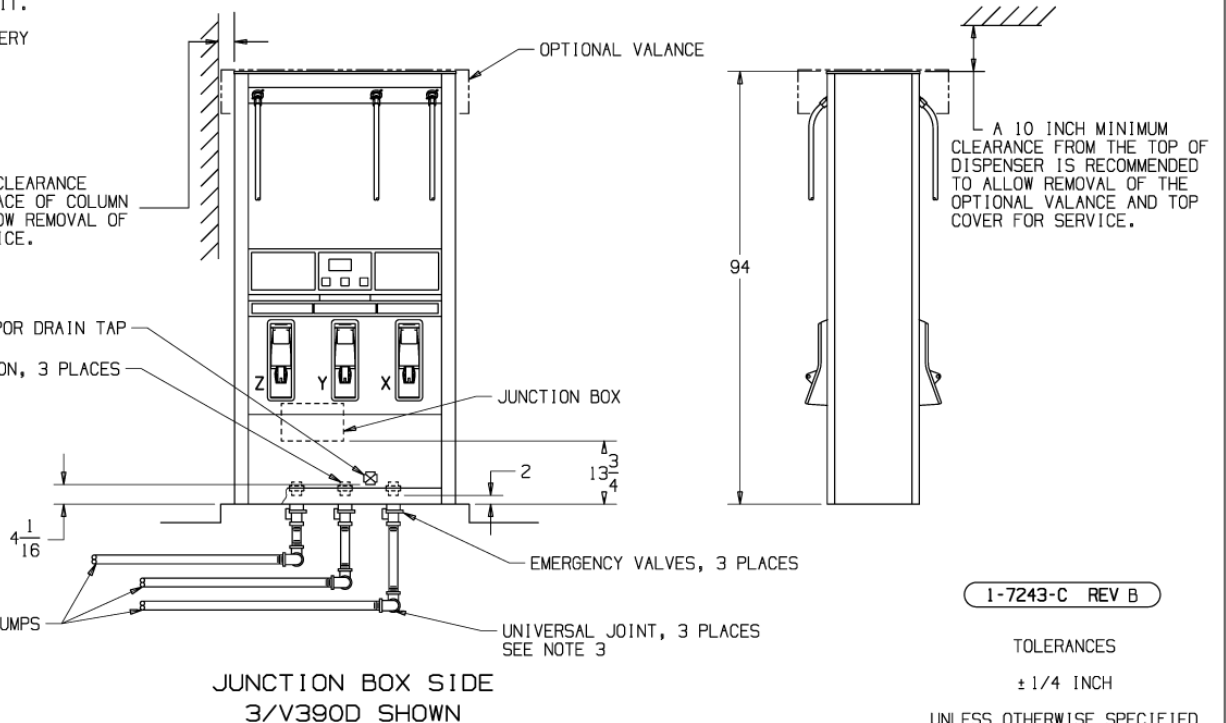
A 3-1/2 INCH MINIMUM CLEARANCE FROM THE OUTSIDE SURFACE OF COLUMN IS RECOMMENDED TO ALLOW REMOVAL OF COVER PANELS FOR SERVICE.

1 INCH NPT WAYNEVAC VAPOR DRAIN TAP

1-1/2 NPT INLET UNION, 3 PLACES

PRODUCT ORIENTATION:

THE NOZZLE PRODUCT ORDER IS THE SAME FOR BOTH SIDES. THE JUNCTION BOX SIDE OF THE DISPENSER MATCHES THE INLET ORDER. THE NON-JUNCTION BOX SIDE IS OPPOSITE THE INLET ORDER.



1-7243-C REV B

TOLERANCES

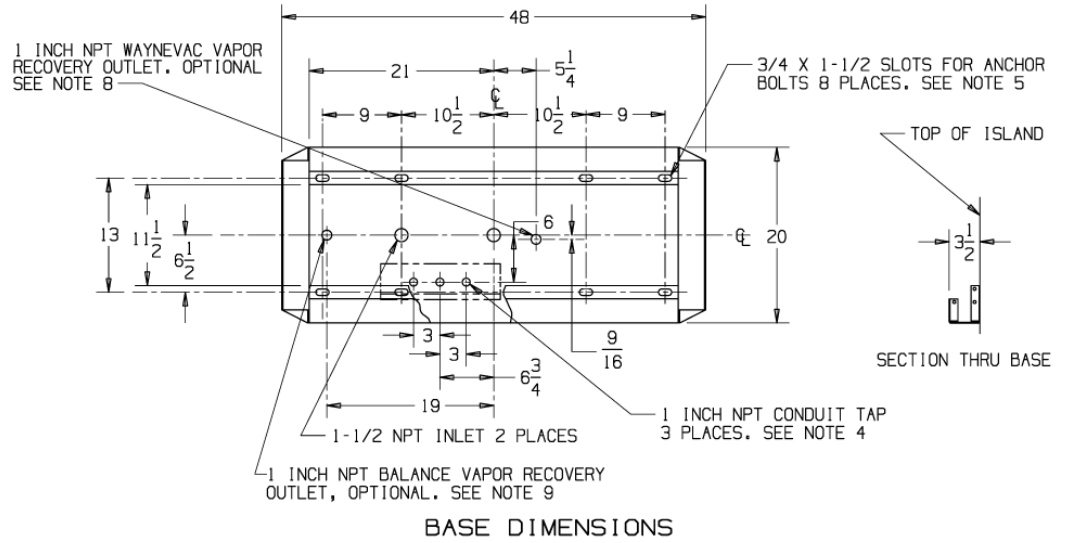
± 1/4 INCH

UNLESS OTHERWISE SPECIFIED

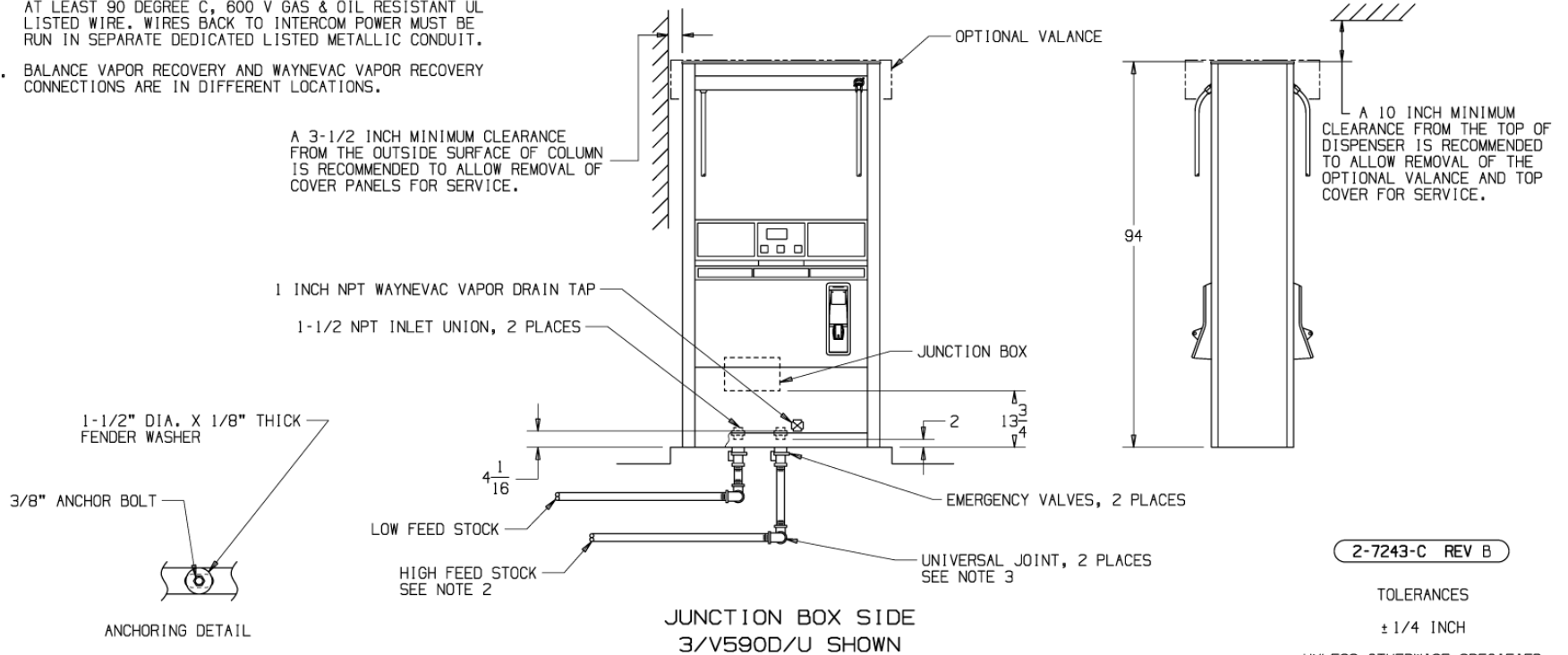
Figure C-2. 1-7243-C Installation Instructions - 3/V390D and 3/V390D/U (Remote)

NOTES:

1. ALL PIPING AND ELECTRICAL INSTALLATIONS MUST CONFORM TO ALL APPLICABLE REGULATIONS INCLUDING NFPA30, FLAMMABLE & COMBUSTIBLE LIQUIDS CODE; NFPA30A, AUTOMOTIVE & MARINE SERVICE STATION CODE; NFPA70, NATIONAL ELECTRICAL CODE. DO NOT "DAISY CHAIN" THE DISPENSER POWER CIRCUIT TO ANY OTHER EQUIPMENT.
2. PIPING FROM TANK TO DISPENSER SHOULD SLOPE UPWARDS TO AVOID AIR OR LIQUID TRAPS.
3. USE UNIVERSAL JOINTS AT DISPENSER TO ALLOW FOR GROUND MOVEMENT.
4. USE ANY OR ALL CONDUIT TAPS SHOWN TO MAKE ELECTRICAL CONNECTIONS TO DISPENSER.
5. FIRMLY MOUNT THE DISPENSER TO THE ISLAND USING THE ANCHOR BOLT LOCATIONS SHOWN. SEE ANCHORING DETAIL. USE OF ALL ANCHORING LOCATIONS RECOMMENDED.
6. EMERGENCY SHUTOFF VALVES AND BREAKAWAY DEVICES ARE EXAMPLES OF REQUIREMENTS STATED IN THE NFPA30A AUTOMOTIVE & MARINE SERVICE STATION CODE. THESE, AS WELL AS ANY OTHER SAFETY DEVICES REQUIRED BY NFPA30 & 30A, MUST BE INSTALLED AND MAINTAINED PER THE MANUFACTURER'S INSTRUCTIONS.
7. THE LOW AND HIGH FEED STOCKS MUST BE PLUMBED AS SHOWN FOR THE DISPENSER TO WORK PROPERLY.
8. OPTIONAL SPEAKER INSTALLATION WIRING IS LOCATED IN JUNCTION BOX, CONNECT INTERCOM CIRCUIT TO A LISTED CLASS 2 POWERED INTERCOM ONLY WITH 18 GAUGE MINIMUM, AT LEAST 90 DEGREE C, 600 V GAS & OIL RESISTANT UL LISTED WIRE. WIRES BACK TO INTERCOM POWER MUST BE RUN IN SEPARATE DEDICATED LISTED METALLIC CONDUIT.
9. BALANCE VAPOR RECOVERY AND WAYNEVAC VAPOR RECOVERY CONNECTIONS ARE IN DIFFERENT LOCATIONS.



A 3-1/2 INCH MINIMUM CLEARANCE FROM THE OUTSIDE SURFACE OF COLUMN IS RECOMMENDED TO ALLOW REMOVAL OF COVER PANELS FOR SERVICE.



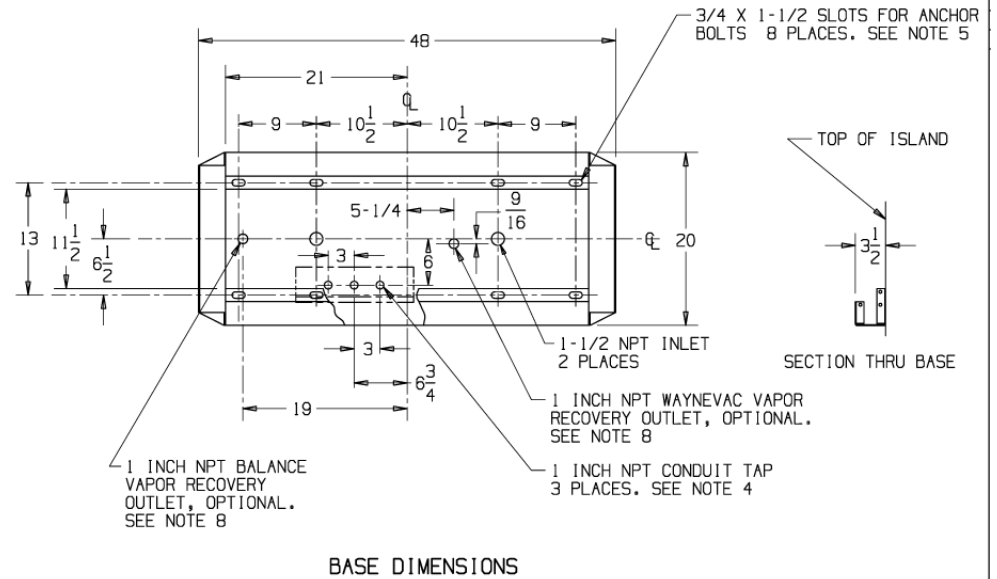
2-7243-C REV B

TOLERANCES
± 1/4 INCH
UNLESS OTHERWISE SPECIFIED

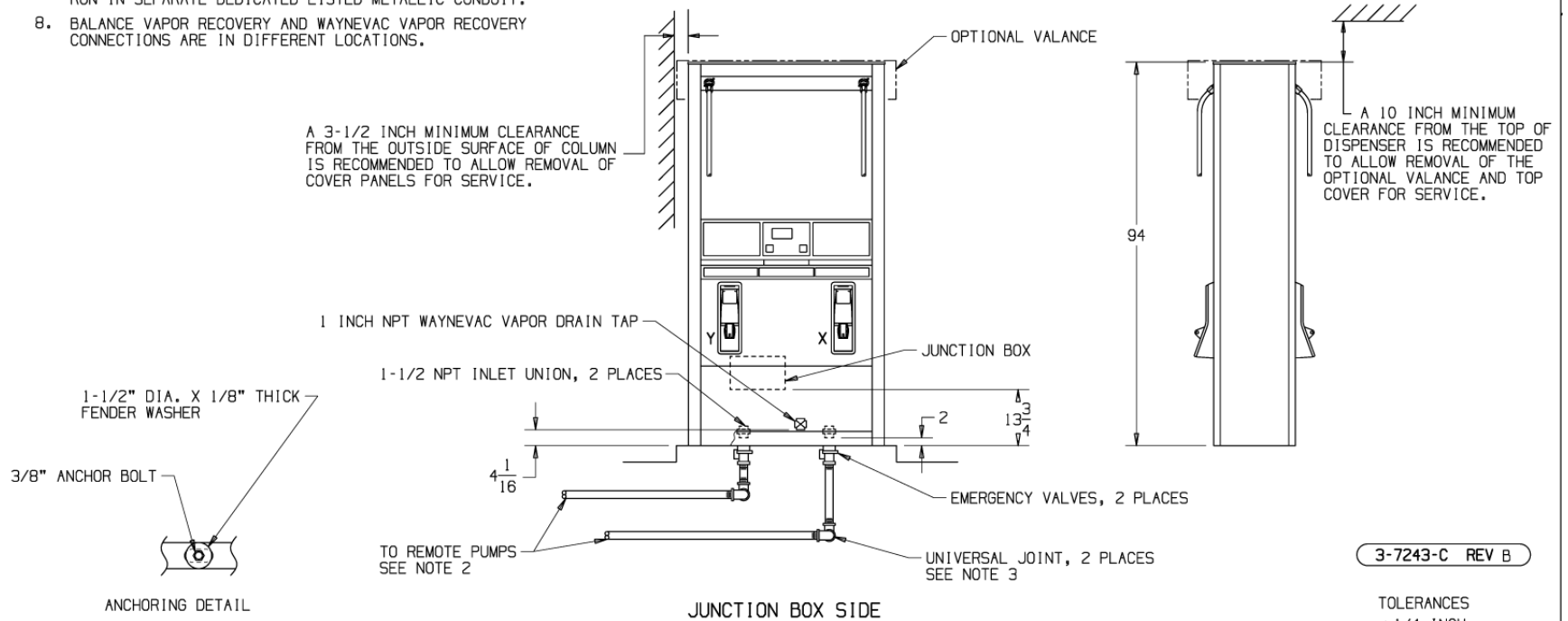
Figure C-3. 2-7243-C Installation Instructions - 3/V590D/U and 3/V595D/U (Remote)

NOTES:

1. ALL PIPING AND ELECTRICAL INSTALLATIONS MUST CONFORM TO ALL APPLICABLE REGULATIONS INCLUDING NFPA30, FLAMMABLE & COMBUSTIBLE LIQUIDS CODE; NFPA30A, AUTOMOTIVE & MARINE SERVICE STATION CODE; NFPA70, NATIONAL ELECTRICAL CODE. DO NOT "DAISY CHAIN" THE DISPENSER POWER CIRCUIT TO ANY OTHER EQUIPMENT.
2. PIPING FROM TANK TO DISPENSER SHOULD SLOPE UPWARDS TO AVOID AIR OR LIQUID TRAPS.
3. USE UNIVERSAL JOINTS AT DISPENSER TO ALLOW FOR GROUND MOVEMENT.
4. USE ANY OR ALL CONDUIT TAPS SHOWN TO MAKE ELECTRICAL CONNECTIONS TO DISPENSER.
5. FIRMLY MOUNT THE DISPENSER TO THE ISLAND USING THE ANCHOR BOLT LOCATIONS SHOWN. SEE ANCHORING DETAIL. USE OF ALL ANCHORING LOCATIONS RECOMMENDED.
6. EMERGENCY SHUTOFF VALVES AND BREAKAWAY DEVICES ARE EXAMPLES OF REQUIREMENTS STATED IN THE NFPA30A AUTOMOTIVE & MARINE SERVICE STATION CODE. THESE, AS WELL AS ANY OTHER SAFETY DEVICES REQUIRED BY NFPA30 & 30A, MUST BE INSTALLED AND MAINTAINED PER THE MANUFACTURER'S INSTRUCTIONS.
7. OPTIONAL SPEAKER INSTALLATION WIRING IS LOCATED IN JUNCTION BOX. CONNECT INTERCOM CIRCUIT TO A LISTED CLASS 2 POWERED INTERCOM ONLY WITH 18 GAUGE MINIMUM, AT LEAST 90 DEGREE C, 600 V GAS & OIL RESISTANT UL LISTED WIRE. WIRES BACK TO INTERCOM POWER MUST BE RUN IN SEPARATE DEDICATED LISTED METALLIC CONDUIT.
8. BALANCE VAPOR RECOVERY AND WAYNEVAC VAPOR RECOVERY CONNECTIONS ARE IN DIFFERENT LOCATIONS.



A 3-1/2 INCH MINIMUM CLEARANCE FROM THE OUTSIDE SURFACE OF COLUMN IS RECOMMENDED TO ALLOW REMOVAL OF COVER PANELS FOR SERVICE.



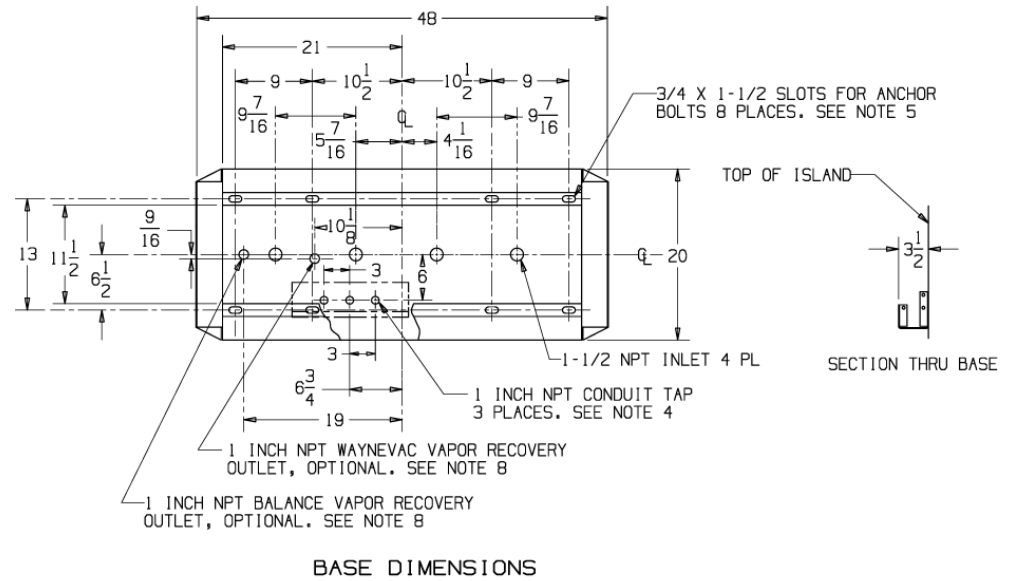
3-7243-C REV B

TOLERANCES
± 1/4 INCH
UNLESS OTHERWISE SPECIFIED

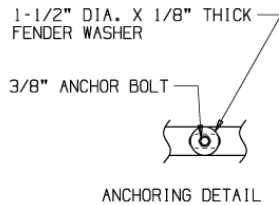
Figure C-4. 3-7243-C Installation Instructions - 3/V399D (Remote)

NOTES:

1. ALL PIPING AND ELECTRICAL INSTALLATIONS MUST CONFORM TO ALL APPLICABLE REGULATIONS INCLUDING NFPA30, FLAMMABLE & COMBUSTIBLE LIQUIDS CODE; NFPA30A, AUTOMOTIVE & MARINE SERVICE STATION CODE; NFPA70, NATIONAL ELECTRICAL CODE. DO NOT "DAISY CHAIN" THE DISPENSER POWER CIRCUIT TO ANY OTHER EQUIPMENT.
2. PIPING FROM TANK TO DISPENSER SHOULD SLOPE UPWARDS TO AVOID AIR OR LIQUID TRAPS.
3. USE UNIVERSAL JOINTS AT DISPENSER TO ALLOW FOR GROUND MOVEMENT.
4. USE ANY OR ALL CONDUIT TAPS SHOWN TO MAKE ELECTRICAL CONNECTIONS TO DISPENSER.
5. FIRMLY MOUNT THE DISPENSER TO THE ISLAND USING THE ANCHOR BOLT LOCATIONS SHOWN. SEE ANCHORING DETAIL. USE OF ALL ANCHORING LOCATIONS RECOMMENDED.
6. EMERGENCY SHUTOFF VALVES AND BREAKAWAY DEVICES ARE EXAMPLES OF REQUIREMENTS STATED IN THE NFPA30A AUTOMOTIVE & MARINE SERVICE STATION CODE. THESE, AS WELL AS ANY OTHER SAFETY DEVICES REQUIRED BY NFPA30 & 30A, MUST BE INSTALLED AND MAINTAINED PER THE MANUFACTURER'S INSTRUCTIONS.
7. OPTIONAL SPEAKER INSTALLATION WIRING IS LOCATED IN JUNCTION BOX. CONNECT INTERCOM CIRCUIT TO A LISTED CLASS 2 POWERED INTERCOM ONLY WITH 18 GAUGE MINIMUM, AT LEAST 90 DEGREE C, 600 V GAS & OIL RESISTANT UL LISTED WIRE. WIRES BACK TO INTERCOM POWER MUST BE RUN IN SEPARATE DEDICATED LISTED METALLIC CONDUIT.
8. BALANCE VAPOR RECOVERY AND WAYNEVAC VAPOR RECOVERY CONNECTIONS ARE IN DIFFERENT LOCATIONS.

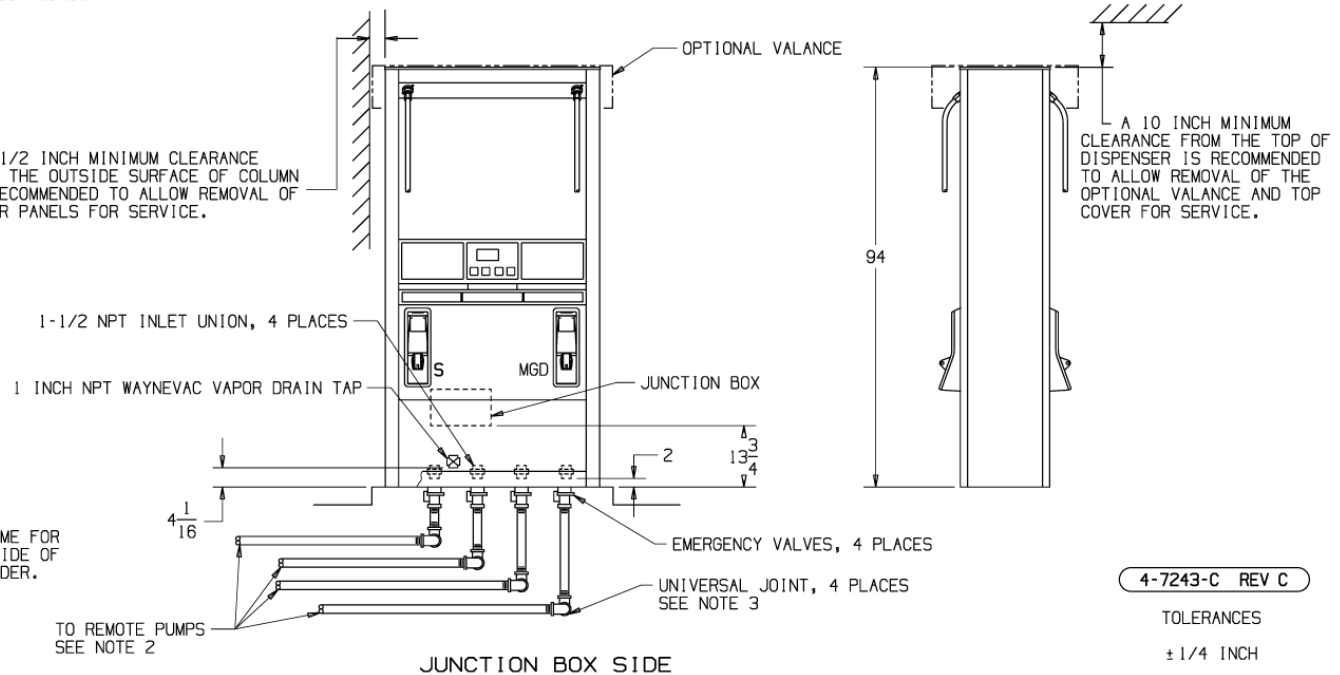


A 3-1/2 INCH MINIMUM CLEARANCE FROM THE OUTSIDE SURFACE OF COLUMN IS RECOMMENDED TO ALLOW REMOVAL OF COVER PANELS FOR SERVICE.



PRODUCT ORIENTATION:

THE NOZZLE PRODUCT ORDER IS THE SAME FOR BOTH SIDES. THE NON-JUNCTION BOX SIDE OF THE DISPENSER MATCHES THE INLET ORDER. THE JUNCTION BOX SIDE IS OPPOSITE THE INLET ORDER.



4-7243-C REV C

TOLERANCES

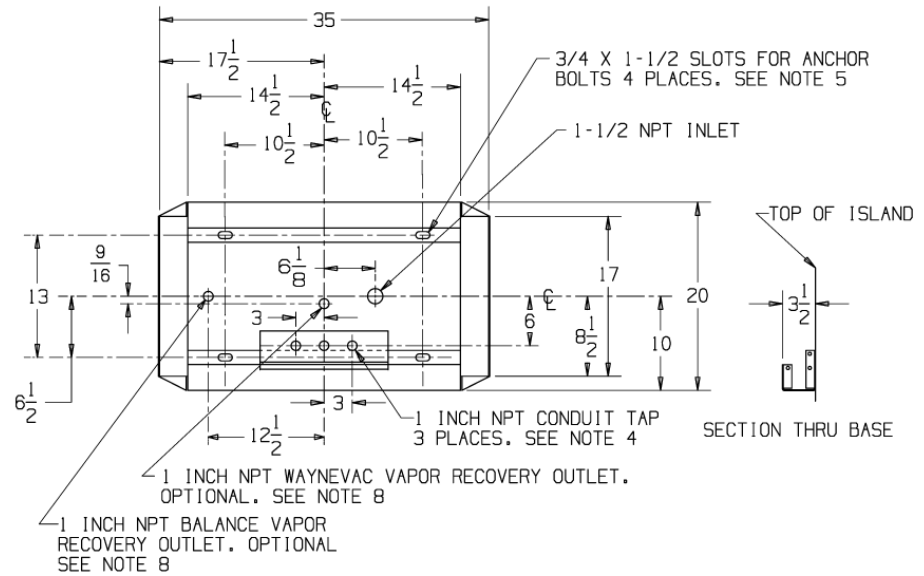
± 1/4 INCH

UNLESS OTHERWISE SPECIFIED

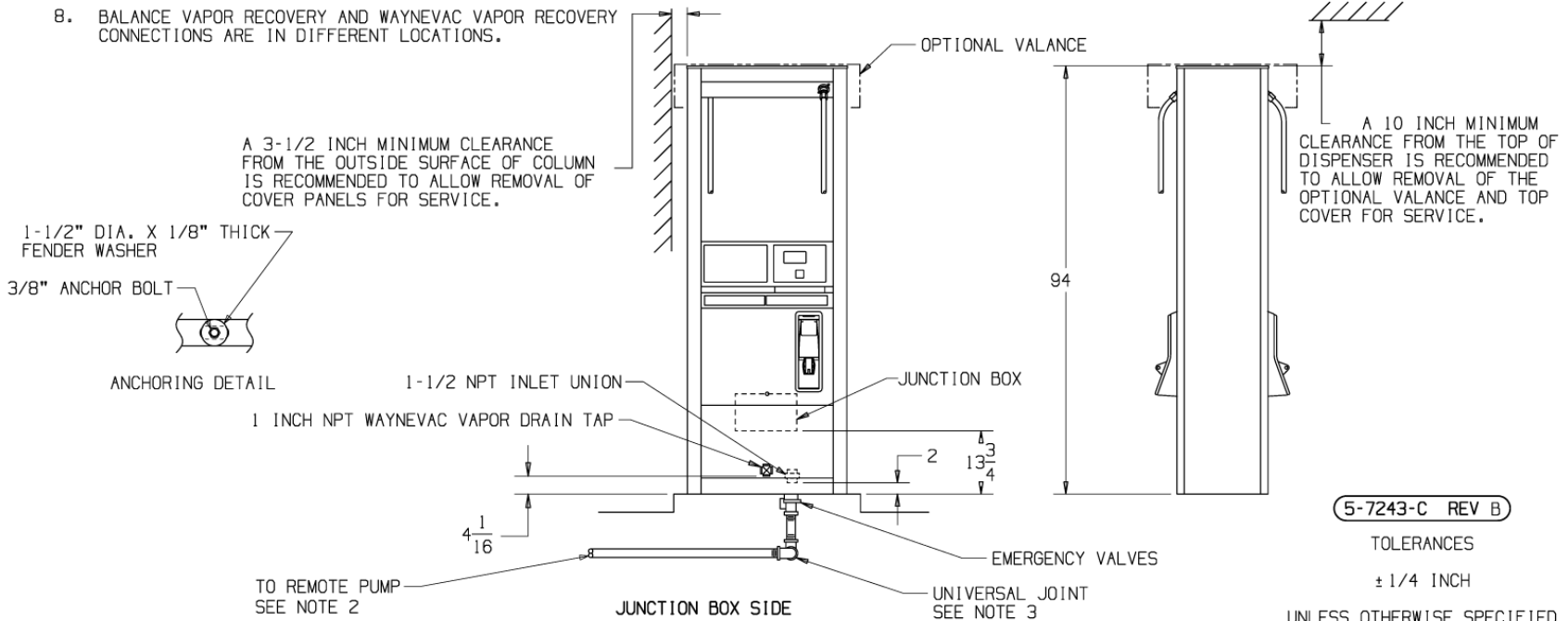
Figure C-5. 4-7243-C Installation Instructions - 3/V490D/U (Remote)

NOTES:

1. ALL PIPING AND ELECTRICAL INSTALLATIONS MUST CONFORM TO ALL APPLICABLE REGULATIONS INCLUDING NFPA30, FLAMMABLE & COMBUSTIBLE LIQUIDS CODE; NFPA30A, AUTOMOTIVE & MARINE SERVICE STATION CODE; NFPA70, NATIONAL ELECTRICAL CODE. DO NOT "DAISY CHAIN" THE DISPENSER POWER CIRCUIT TO ANY OTHER EQUIPMENT.
2. PIPING FROM TANK TO DISPENSER SHOULD SLOPE UPWARDS TO AVOID AIR OR LIQUID TRAPS.
3. USE UNIVERSAL JOINTS AT DISPENSER TO ALLOW FOR GROUND MOVEMENT.
4. USE ANY OR ALL CONDUIT TAPS SHOWN TO MAKE ELECTRICAL CONNECTIONS TO DISPENSER.
5. FIRMLY MOUNT THE DISPENSER TO THE ISLAND USING THE ANCHOR BOLT LOCATIONS SHOWN. SEE ANCHORING DETAIL. USE OF ALL ANCHORING LOCATIONS RECOMMENDED.
6. EMERGENCY SHUTOFF VALVES AND BREAKAWAY DEVICES ARE EXAMPLES OF REQUIREMENTS STATED IN THE NFPA30A AUTOMOTIVE & MARINE SERVICE STATION CODE. THESE, AS WELL AS ANY OTHER SAFETY DEVICES REQUIRED BY NFPA30 & 30A, MUST BE INSTALLED AND MAINTAINED PER THE MANUFACTURER'S INSTRUCTIONS.
7. OPTIONAL SPEAKER INSTALLATION WIRING IS LOCATED IN JUNCTION BOX. CONNECT INTERCOM CIRCUIT TO A LISTED CLASS 2 POWERED INTERCOM ONLY WITH 18 GAUGE MINIMUM, AT LEAST 90 DEGREE C, 600 V GAS & OIL RESISTANT UL LISTED WIRE. WIRES BACK TO INTERCOM POWER MUST BE RUN IN SEPARATE DEDICATED LISTED METALLIC CONDUIT.
8. BALANCE VAPOR RECOVERY AND WAYNEVAC VAPOR RECOVERY CONNECTIONS ARE IN DIFFERENT LOCATIONS.



BASE DIMENSIONS



5-7243-C REV B

TOLERANCES

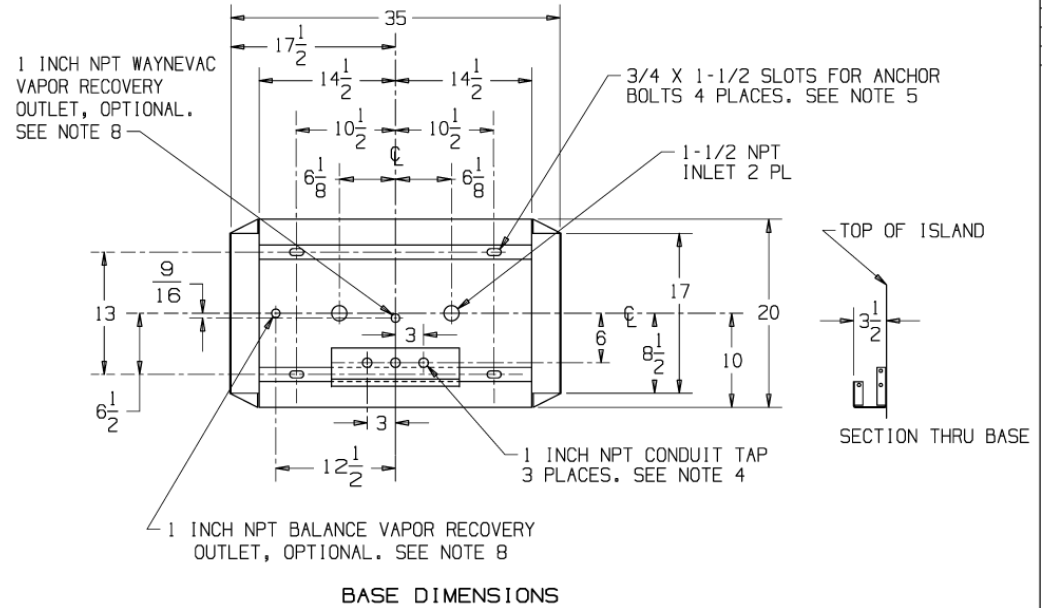
± 1/4 INCH

UNLESS OTHERWISE SPECIFIED

Figure C-6. 5-7243-C Installation Instructions - 3V387D (Remote)

NOTES:

1. ALL PIPING AND ELECTRICAL INSTALLATIONS MUST CONFORM TO ALL APPLICABLE REGULATIONS INCLUDING NFPA30, FLAMMABLE & COMBUSTIBLE LIQUIDS CODE; NFPA30A, AUTOMOTIVE & MARINE SERVICE STATION CODE; NFPA70, NATIONAL ELECTRICAL CODE. DO NOT "DAISY CHAIN" THE DISPENSER POWER CIRCUIT TO ANY OTHER EQUIPMENT
2. PIPING FROM TANK TO DISPENSER SHOULD SLOPE UPWARDS TO AVOID AIR OR LIQUID TRAPS.
3. USE UNIVERSAL JOINTS AT DISPENSER TO ALLOW FOR GROUND MOVEMENT.
4. USE ANY OR ALL CONDUIT TAPS SHOWN TO MAKE ELECTRICAL CONNECTIONS TO DISPENSER.
5. FIRMLY MOUNT THE DISPENSER TO THE ISLAND USING THE ANCHOR BOLT LOCATIONS SHOWN. SEE ANCHORING DETAIL. USE OF ALL ANCHORING LOCATIONS RECOMMENDED.
6. EMERGENCY SHUTOFF VALVES AND BREAKAWAY DEVICES ARE EXAMPLES OF REQUIREMENTS STATED IN THE NFPA30A AUTOMOTIVE & MARINE SERVICE STATION CODE. THESE, AS WELL AS ANY OTHER SAFETY DEVICES REQUIRED BY NFPA30 & 30A, MUST BE INSTALLED AND MAINTAINED PER THE MANUFACTURER'S INSTRUCTIONS.
7. OPTIONAL SPEAKER INSTALLATION WIRING IS LOCATED IN JUNCTION BOX. CONNECT INTERCOM CIRCUIT TO A LISTED CLASS 2 POWERED INTERCOM ONLY WITH 18 GAUGE MINIMUM, AT LEAST 90 DEGREE C, 600 V GAS & OIL RESISTANT UL LISTED WIRE. WIRES BACK TO INTERCOM POWER MUST BE RUN IN SEPARATE DEDICATED LISTED METALLIC CONDUIT.
8. BALANCE VAPOR RECOVERY AND WAYNEVAC VAPOR RECOVERY CONNECTIONS MAY BE IN DIFFERENT LOCATIONS.



A 3-1/2 INCH MINIMUM CLEARANCE FROM THE OUTSIDE SURFACE OF COLUMN IS RECOMMENDED TO ALLOW REMOVAL OF COVER PANELS FOR SERVICE.

A 10 INCH MINIMUM CLEARANCE FROM THE TOP OF DISPENSER IS RECOMMENDED TO ALLOW REMOVAL OF THE OPTIONAL VALANCE AND TOP COVER FOR SERVICE.

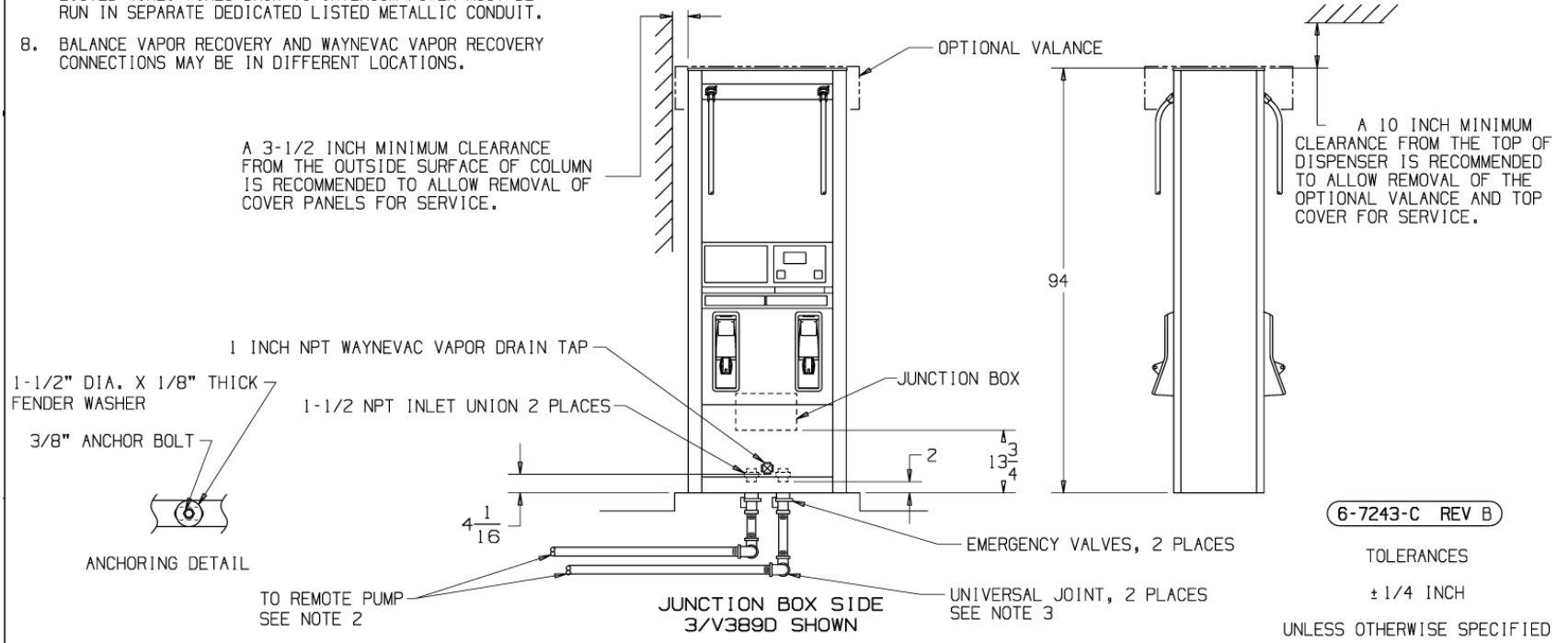
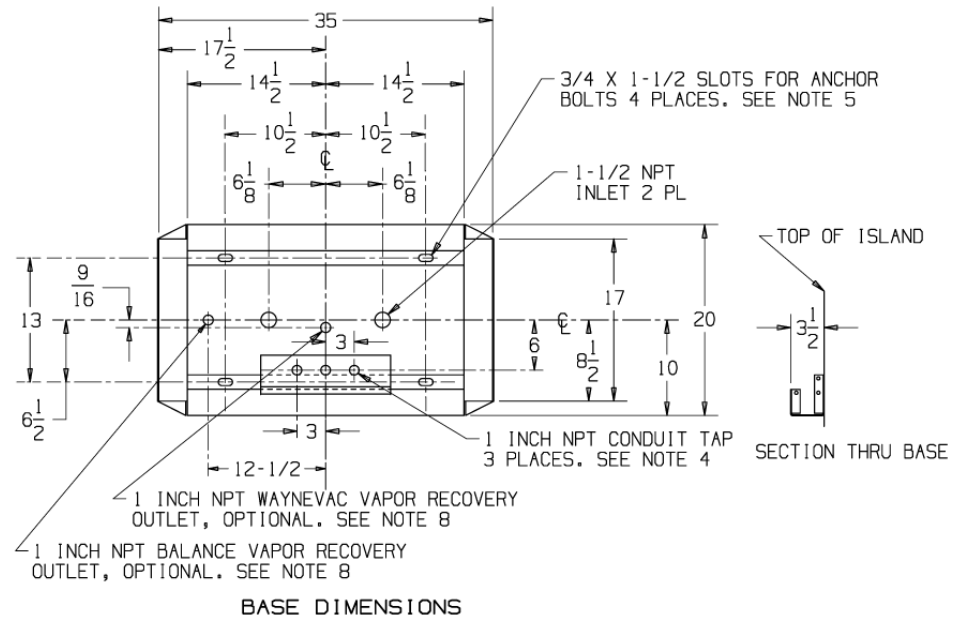


Figure C-7. 6-7243-C Installation Instructions - 3/V388D and 3/V389D (Remote)

NOTES:

1. ALL PIPING AND ELECTRICAL INSTALLATIONS MUST CONFORM TO ALL APPLICABLE REGULATIONS INCLUDING NFPA30, FLAMMABLE & COMBUSTIBLE LIQUIDS CODE; NFPA30A, AUTOMOTIVE & MARINE SERVICE STATION CODE; NFPA70, NATIONAL ELECTRICAL CODE. DO NOT "DAISY CHAIN" THE DISPENSER POWER CIRCUIT TO ANY OTHER EQUIPMENT
2. PIPING FROM TANK TO DISPENSER SHOULD SLOPE UPWARDS TO AVOID AIR OR LIQUID TRAPS.
3. USE UNIVERSAL JOINTS AT DISPENSER TO ALLOW FOR GROUND MOVEMENT.
4. USE ANY OR ALL CONDUIT TAPS SHOWN TO MAKE ELECTRICAL CONNECTIONS TO DISPENSER.
5. FIRMLY MOUNT THE DISPENSER TO THE ISLAND USING THE ANCHOR BOLT LOCATIONS SHOWN. SEE ANCHORING DETAIL. USE OF ALL ANCHORING LOCATIONS RECOMMENDED.
6. EMERGENCY SHUTOFF VALVES AND BREAKAWAY DEVICES ARE EXAMPLES OF REQUIREMENTS STATED IN THE NFPA30A AUTOMOTIVE & MARINE SERVICE STATION CODE. THESE, AS WELL AS ANY OTHER SAFETY DEVICES REQUIRED BY NFPA30 & 30A, MUST BE INSTALLED AND MAINTAINED PER THE MANUFACTURER'S INSTRUCTIONS.
7. OPTIONAL SPEAKER INSTALLATION WIRING IS LOCATED IN JUNCTION BOX. CONNECT INTERCOM CIRCUIT TO A LISTED CLASS 2 POWERED INTERCOM ONLY WITH 18 GAUGE MINIMUM, AT LEAST 90 DEGREE C, 600 V GAS & OIL RESISTANT UL LISTED WIRE. WIRES BACK TO INTERCOM POWER MUST BE RUN IN SEPARATE DEDICATED LISTED METALLIC CONDUIT.
8. BALANCE VAPOR RECOVERY AND WAYNEVAC VAPOR RECOVERY CONNECTIONS ARE IN DIFFERENT LOCATIONS.
9. THE LOW AND HIGH FEED STOCKS MUST BE PLUMBED AS SHOWN FOR THE DISPENSER TO WORK PROPERLY.

A 3-1/2 INCH MINIMUM CLEARANCE FROM THE OUTSIDE SURFACE OF COLUMN IS RECOMMENDED TO ALLOW REMOVAL OF COVER PANELS FOR SERVICE.



1-1/2" DIA. X 1/8" THICK FENDER WASHER

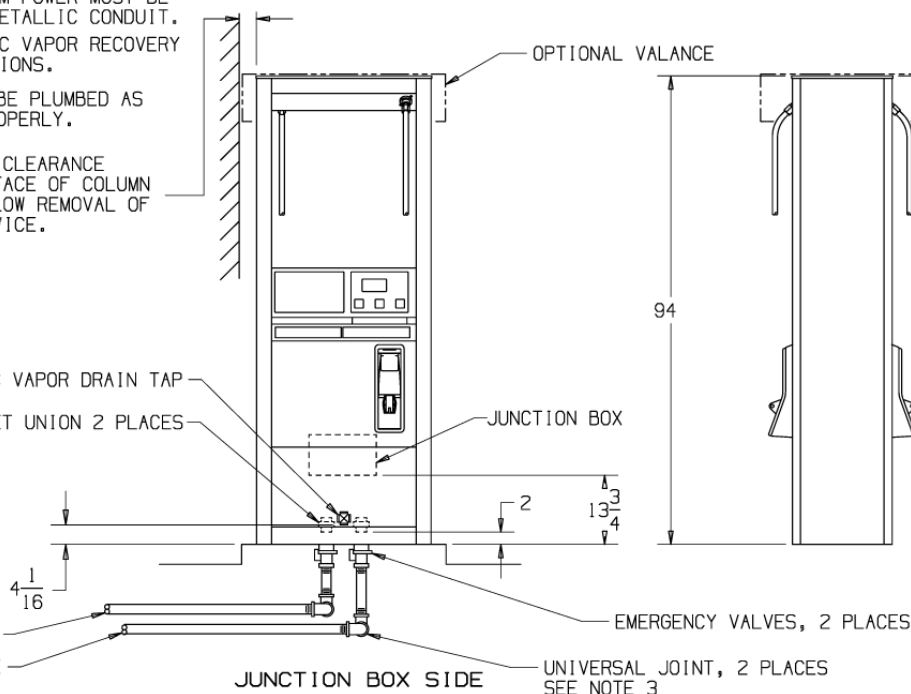
1 INCH NPT WAYNEVAC VAPOR DRAIN TAP
1-1/2 NPT INLET UNION 2 PLACES

3/8" ANCHOR BOLT

ANCHORING DETAIL

SEE NOTE 2

LO FEED STOCK
HI FEED STOCK



A 10 INCH MINIMUM CLEARANCE FROM THE TOP OF DISPENSER IS RECOMMENDED TO ALLOW REMOVAL OF THE OPTIONAL VALANCE AND TOP COVER FOR SERVICE.

7-7243-C REV B

TOLERANCES

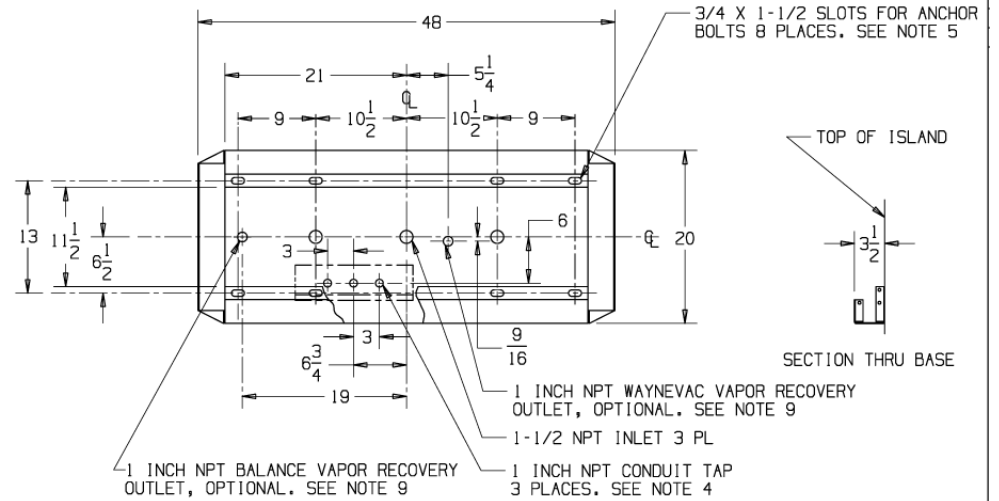
± 1/4 INCH

UNLESS OTHERWISE SPECIFIED

Figure C-8. 7-7243-C Installation Instructions - 3/V580D and 3/V585D (Remote)

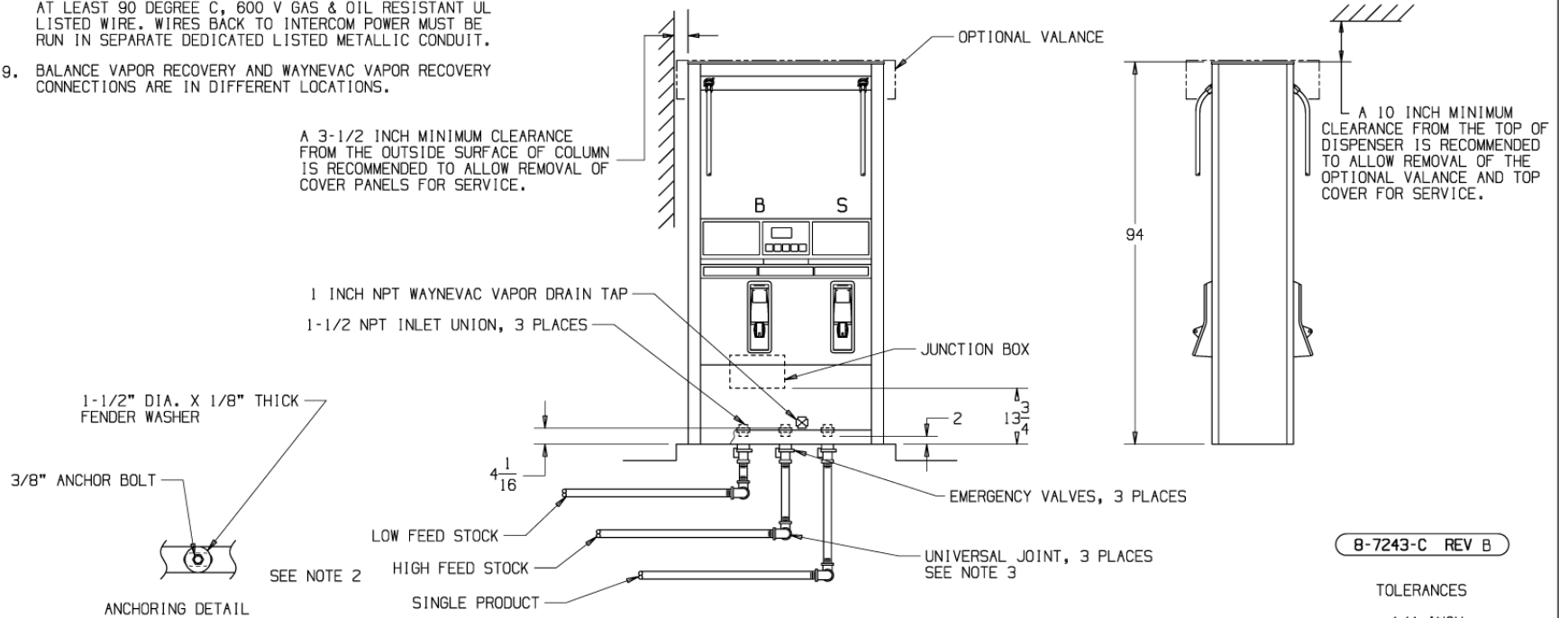
NOTES:

1. ALL PIPING AND ELECTRICAL INSTALLATIONS MUST CONFORM TO ALL APPLICABLE REGULATIONS INCLUDING NFPA30, FLAMMABLE & COMBUSTIBLE LIQUIDS CODE; NFPA30A, AUTOMOTIVE & MARINE SERVICE STATION CODE; NFPA70, NATIONAL ELECTRICAL CODE. DO NOT "DAISY CHAIN" THE DISPENSER POWER CIRCUIT TO ANY OTHER EQUIPMENT.
2. PIPING FROM TANK TO DISPENSER SHOULD SLOPE UPWARDS TO AVOID AIR OR LIQUID TRAPS.
3. USE UNIVERSAL JOINTS AT DISPENSER TO ALLOW FOR GROUND MOVEMENT.
4. USE ANY OR ALL CONDUIT TAPS SHOWN TO MAKE ELECTRICAL CONNECTIONS TO DISPENSER.
5. FIRMLY MOUNT THE DISPENSER TO THE ISLAND USING THE ANCHOR BOLT LOCATIONS SHOWN. SEE ANCHORING DETAIL. USE OF ALL ANCHORING LOCATIONS RECOMMENDED.
6. EMERGENCY SHUTOFF VALVES AND BREAKAWAY DEVICES ARE EXAMPLES OF REQUIREMENTS STATED IN THE NFPA30A AUTOMOTIVE & MARINE SERVICE STATION CODE. THESE, AS WELL AS ANY OTHER SAFETY DEVICES REQUIRED BY NFPA30 & 30A, MUST BE INSTALLED AND MAINTAINED PER THE MANUFACTURER'S INSTRUCTIONS.
7. THE LOW AND HIGH FEED STOCKS MUST BE PLUMBED AS SHOWN FOR THE DISPENSER TO WORK PROPERLY.
8. OPTIONAL SPEAKER INSTALLATION WIRING IS LOCATED IN JUNCTION BOX. CONNECT INTERCOM CIRCUIT TO A LISTED CLASS 2 POWERED INTERCOM ONLY WITH 18 GAUGE MINIMUM, AT LEAST 90 DEGREE C, 600 V GAS & OIL RESISTANT UL LISTED WIRE. WIRES BACK TO INTERCOM POWER MUST BE RUN IN SEPARATE DEDICATED LISTED METALLIC CONDUIT.
9. BALANCE VAPOR RECOVERY AND WAYNEVAC VAPOR RECOVERY CONNECTIONS ARE IN DIFFERENT LOCATIONS.



BASE DIMENSIONS

A 3-1/2 INCH MINIMUM CLEARANCE FROM THE OUTSIDE SURFACE OF COLUMN IS RECOMMENDED TO ALLOW REMOVAL OF COVER PANELS FOR SERVICE.



JUNCTION BOX SIDE

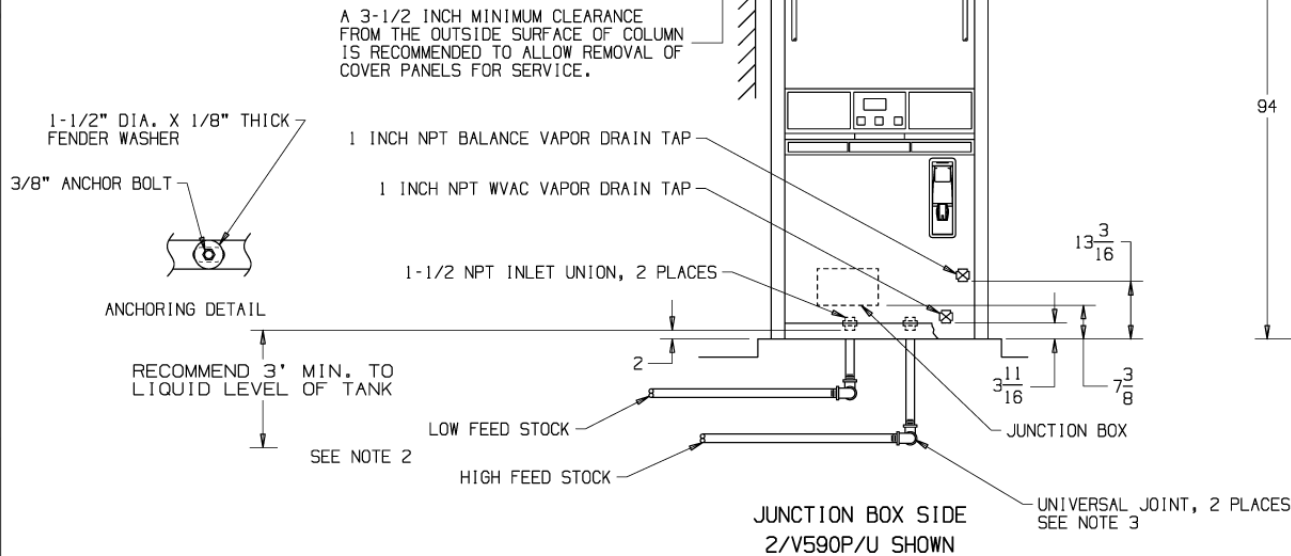
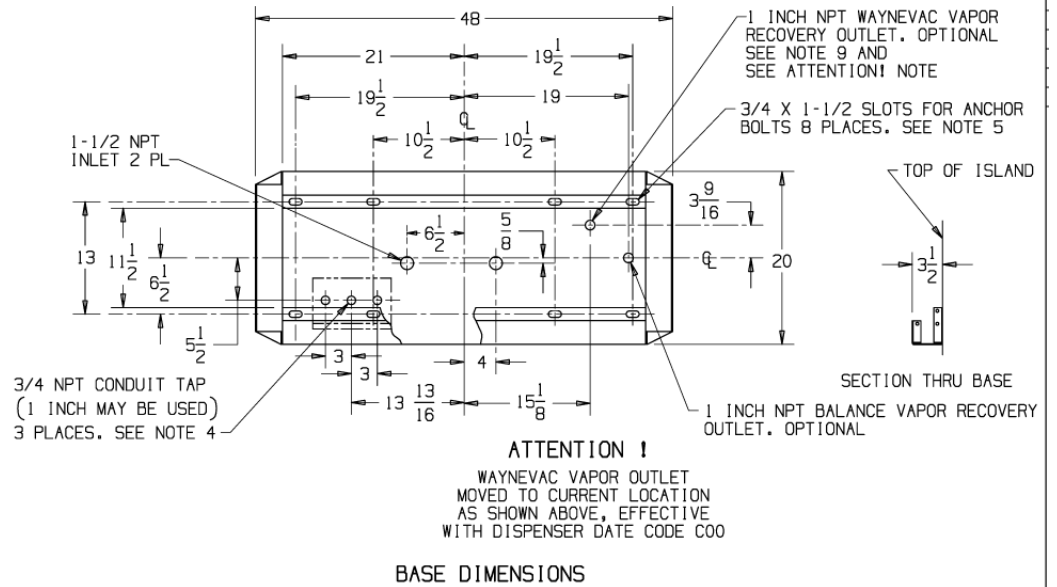
8-7243-C REV B

TOLERANCES
± 1/4 INCH
UNLESS OTHERWISE SPECIFIED

Figure C-9. 8-7243-C Installation Instructions - 3/595D (Remote) - Except 3/595D/U See 2-7243-C

NOTES:

1. ALL PIPING AND ELECTRICAL INSTALLATIONS MUST CONFORM TO ALL APPLICABLE REGULATIONS INCLUDING NFPA30, FLAMMABLE & COMBUSTIBLE LIQUIDS CODE; NFPA30A, AUTOMOTIVE & MARINE SERVICE STATION CODE; NFPA70, NATIONAL ELECTRICAL CODE. DO NOT "DAISY CHAIN" THE DISPENSER POWER CIRCUIT TO ANY OTHER EQUIPMENT.
2. SLOPE PIPING FROM TANK TO DISPENSER UPWARDS, AVOIDING AIR OR LIQUID TRAPS. RECOMMEND A 3 FT. MINIMUM BETWEEN THE INLET UNION TO UNDERGROUND TANK LIQUID SURFACE. IF NOT PROVIDED, WAYNE P/N 129881 MUST BE INSTALLED IN PUMPING UNIT AIR SEPARATOR FOR OPTIMUM PERFORMANCE. SEE INSTALLATION MANUAL.
3. USE UNIVERSAL JOINTS AT DISPENSER TO ALLOW FOR GROUND MOVEMENT.
4. USE ANY OR ALL CONDUIT TAPS SHOWN TO MAKE ELECTRICAL CONNECTIONS TO DISPENSER.
5. FIRMLY MOUNT THE DISPENSER TO THE ISLAND USING THE ANCHOR BOLT LOCATIONS SHOWN. SEE ANCHORING DETAIL. USE OF ALL ANCHORING LOCATIONS RECOMMENDED.
6. BREAKAWAY DEVICES ARE EXAMPLES OF REQUIREMENTS STATED IN THE NFPA30A AUTOMOTIVE & MARINE SERVICE STATION CODE. THESE, AS WELL AS ANY OTHER SAFETY DEVICES REQUIRED BY NFPA30 & 30A, MUST BE INSTALLED AND MAINTAINED PER THE MANUFACTURER'S INSTRUCTIONS.
7. THE LOW AND HIGH FEED STOCKS MUST BE PLUMBED AS SHOWN FOR THE DISPENSER TO WORK PROPERLY.
8. OPTIONAL SPEAKER INSTALLATION WIRING IS LOCATED IN JUNCTION BOX. CONNECT INTERCOM CIRCUIT TO A LISTED CLASS 2 POWERED INTERCOM ONLY WITH 18 GAUGE MINIMUM, AT LEAST 90 DEGREE C, 600 V GAS & OIL RESISTANT UL LISTED WIRE. WIRES BACK TO INTERCOM POWER MUST BE RUN IN SEPARATE DEDICATED LISTED METALLIC CONDUIT.
9. BALANCE VAPOR RECOVERY AND WAYNEVAC VAPOR RECOVERY CONNECTIONS ARE IN DIFFERENT LOCATIONS.



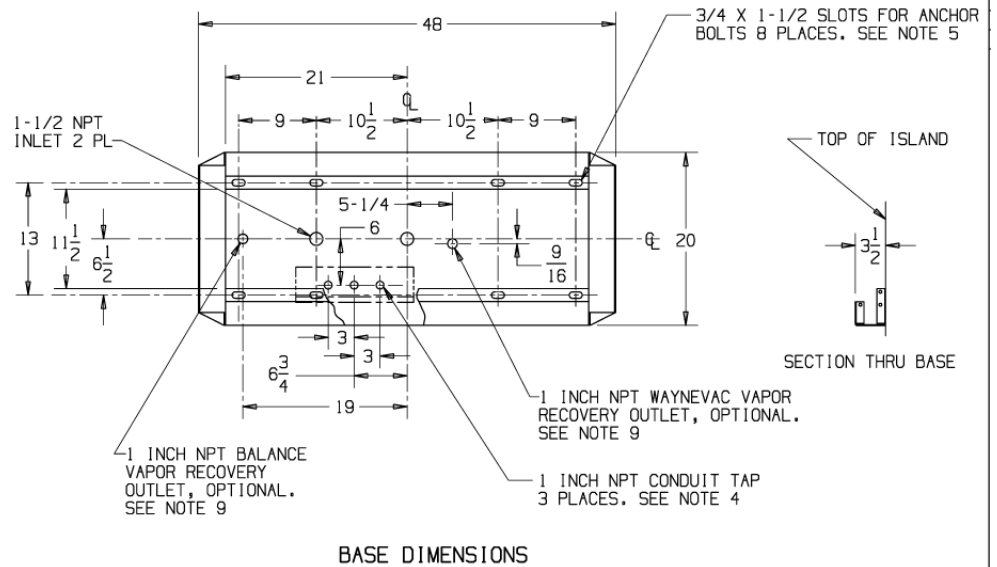
9-7193-C REV F

TOLERANCES
± 1/4 INCH
UNLESS OTHERWISE SPECIFIED

Figure C-10. 9-7243-C Installation Instructions - 3/V490D (Remote) - Except 3/V490D/U See 4-7243-C

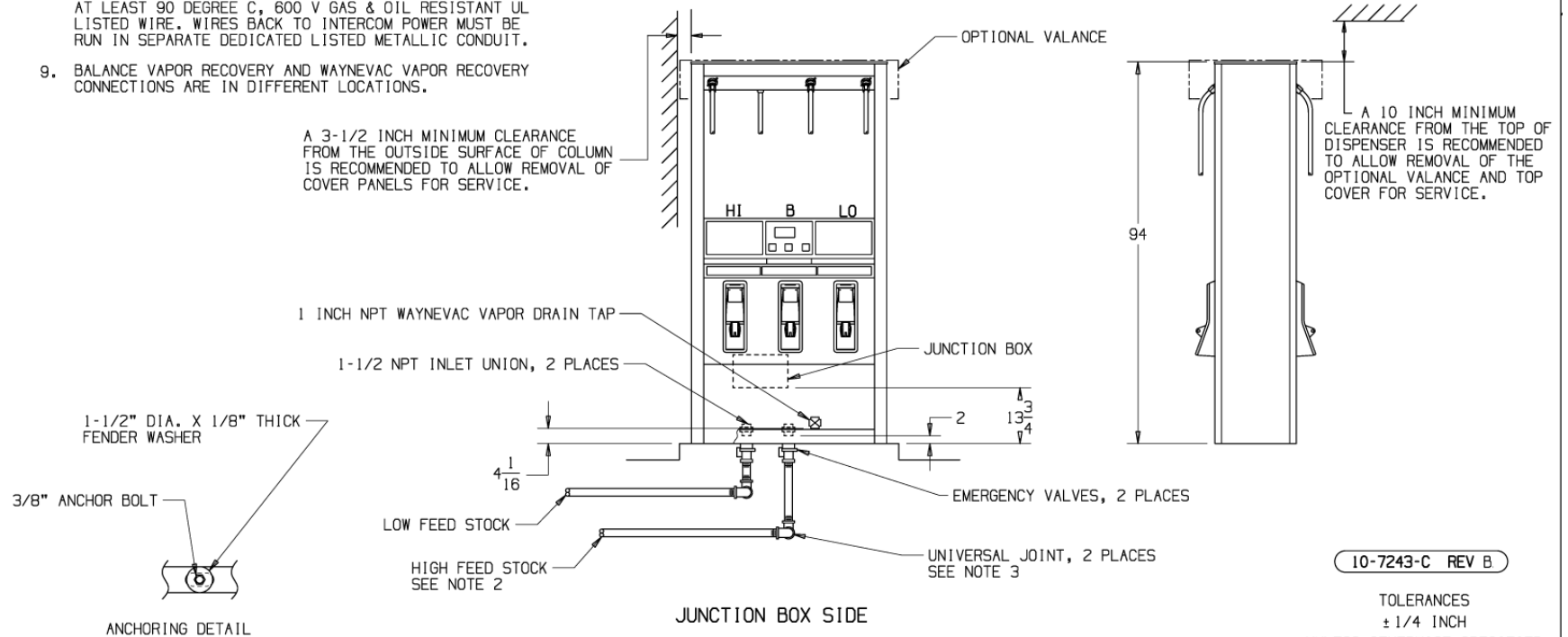
NOTES:

1. ALL PIPING AND ELECTRICAL INSTALLATIONS MUST CONFORM TO ALL APPLICABLE REGULATIONS INCLUDING NFPA30, FLAMMABLE & COMBUSTIBLE LIQUIDS CODE; NFPA30A, AUTOMOTIVE & MARINE SERVICE STATION CODE; NFPA70, NATIONAL ELECTRICAL CODE. DO NOT "DAISY CHAIN" THE DISPENSER POWER CIRCUIT TO ANY OTHER EQUIPMENT.
2. PIPING FROM TANK TO DISPENSER SHOULD SLOPE UPWARDS TO AVOID AIR OR LIQUID TRAPS.
3. USE UNIVERSAL JOINTS AT DISPENSER TO ALLOW FOR GROUND MOVEMENT.
4. USE ANY OR ALL CONDUIT TAPS SHOWN TO MAKE ELECTRICAL CONNECTIONS TO DISPENSER.
5. FIRMLY MOUNT THE DISPENSER TO THE ISLAND USING THE ANCHOR BOLT LOCATIONS SHOWN. SEE ANCHORING DETAIL. USE OF ALL ANCHORING LOCATIONS RECOMMENDED.
6. EMERGENCY SHUTOFF VALVES AND BREAKAWAY DEVICES ARE EXAMPLES OF REQUIREMENTS STATED IN THE NFPA30A AUTOMOTIVE & MARINE SERVICE STATION CODE. THESE, AS WELL AS ANY OTHER SAFETY DEVICES REQUIRED BY NFPA30 & 30A, MUST BE INSTALLED AND MAINTAINED PER THE MANUFACTURER'S INSTRUCTIONS.
7. THE LOW AND HIGH FEED STOCKS MUST BE PLUMBED AS SHOWN FOR THE DISPENSER TO WORK PROPERLY.
8. OPTIONAL SPEAKER INSTALLATION WIRING IS LOCATED IN JUNCTION BOX. CONNECT INTERCOM CIRCUIT TO A LISTED CLASS 2 POWERED INTERCOM ONLY WITH 18 GAUGE MINIMUM, AT LEAST 90 DEGREE C, 600 V GAS & OIL RESISTANT UL LISTED WIRE. WIRES BACK TO INTERCOM POWER MUST BE RUN IN SEPARATE DEDICATED LISTED METALLIC CONDUIT.
9. BALANCE VAPOR RECOVERY AND WAYNEVAC VAPOR RECOVERY CONNECTIONS ARE IN DIFFERENT LOCATIONS.



A 3-1/2 INCH MINIMUM CLEARANCE FROM THE OUTSIDE SURFACE OF COLUMN IS RECOMMENDED TO ALLOW REMOVAL OF COVER PANELS FOR SERVICE.

A 10 INCH MINIMUM CLEARANCE FROM THE TOP OF DISPENSER IS RECOMMENDED TO ALLOW REMOVAL OF THE OPTIONAL VALANCE AND TOP COVER FOR SERVICE.



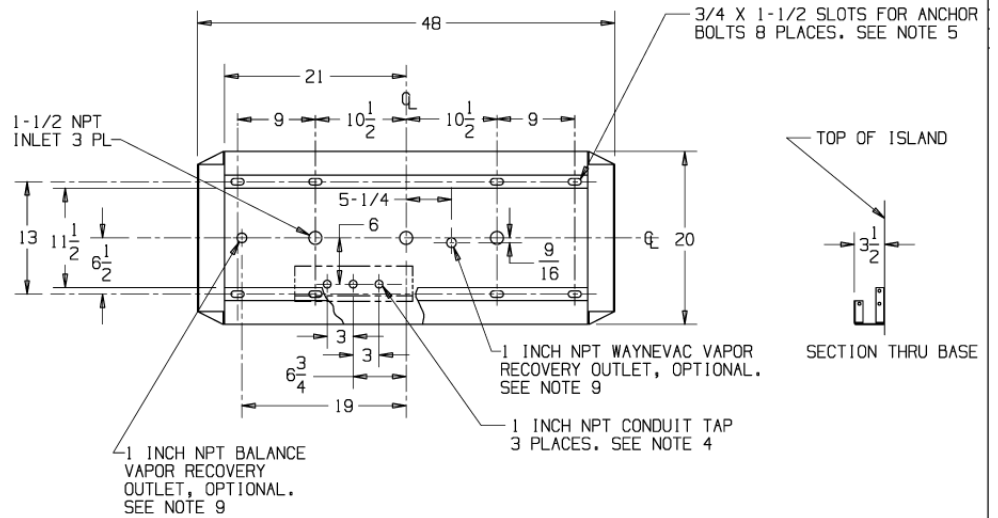
10-7243-C REV B

TOLERANCES
± 1/4 INCH
UNLESS OTHERWISE SPECIFIED

Figure C-11. 10-7243-C Installation Instructions - 3/V590D (Remote) - Except 3/V590D/U See 2-7243-C

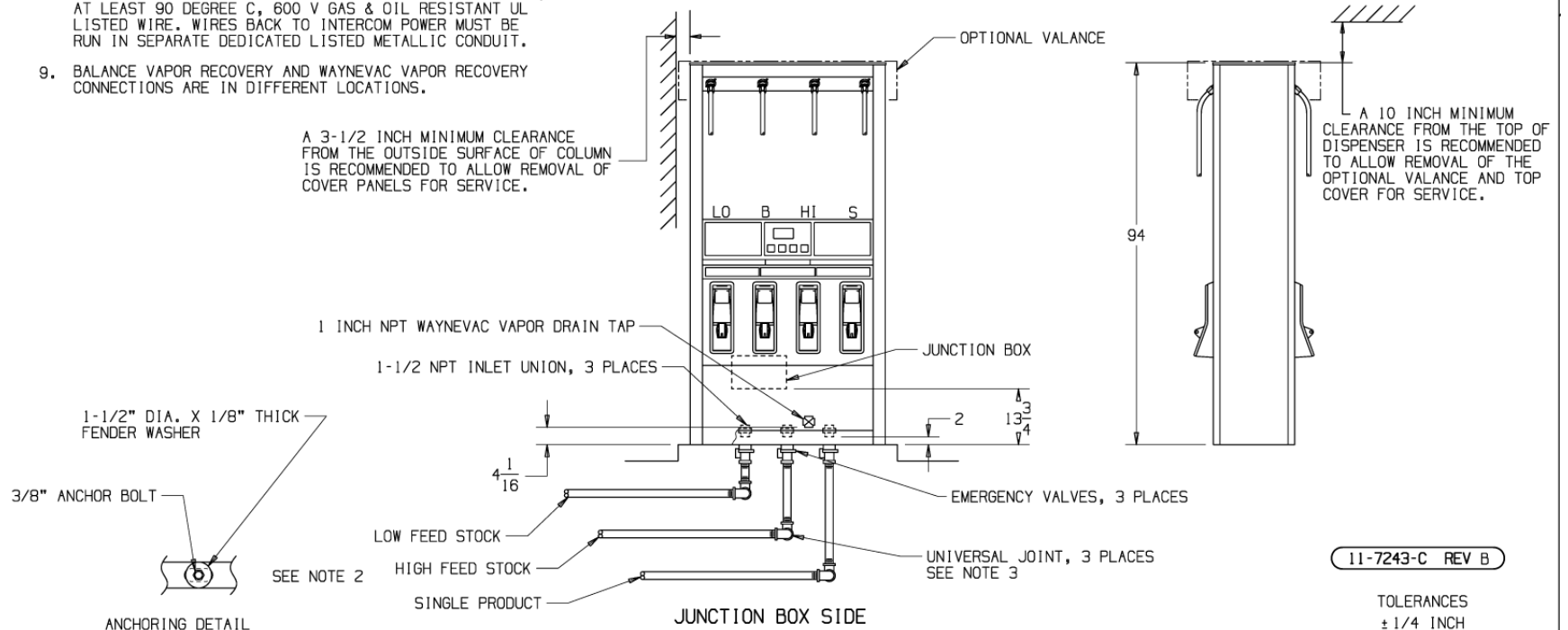
NOTES:

1. ALL PIPING AND ELECTRICAL INSTALLATIONS MUST CONFORM TO ALL APPLICABLE REGULATIONS INCLUDING NFPA30, FLAMMABLE & COMBUSTIBLE LIQUIDS CODE; NFPA30A, AUTOMOTIVE & MARINE SERVICE STATION CODE; NFPA70, NATIONAL ELECTRICAL CODE. DO NOT "DAISY CHAIN" THE DISPENSER POWER CIRCUIT TO ANY OTHER EQUIPMENT.
2. PIPING FROM TANK TO DISPENSER SHOULD SLOPE UPWARDS TO AVOID AIR OR LIQUID TRAPS.
3. USE UNIVERSAL JOINTS AT DISPENSER TO ALLOW FOR GROUND MOVEMENT.
4. USE ANY OR ALL CONDUIT TAPS SHOWN TO MAKE ELECTRICAL CONNECTIONS TO DISPENSER.
5. FIRMLY MOUNT THE DISPENSER TO THE ISLAND USING THE ANCHOR BOLT LOCATIONS SHOWN. SEE ANCHORING DETAIL. USE OF ALL ANCHORING LOCATIONS RECOMMENDED.
6. EMERGENCY SHUTOFF VALVES AND BREAKAWAY DEVICES ARE EXAMPLES OF REQUIREMENTS STATED IN THE NFPA30A AUTOMOTIVE & MARINE SERVICE STATION CODE. THESE, AS WELL AS ANY OTHER SAFETY DEVICES REQUIRED BY NFPA30 & 30A, MUST BE INSTALLED AND MAINTAINED PER THE MANUFACTURER'S INSTRUCTIONS.
7. THE LOW AND HIGH FEED STOCKS MUST BE PLUMBED AS SHOWN FOR THE DISPENSER TO WORK PROPERLY.
8. OPTIONAL SPEAKER INSTALLATION WIRING IS LOCATED IN JUNCTION BOX. CONNECT INTERCOM CIRCUIT TO A LISTED CLASS 2 POWERED INTERCOM ONLY WITH 18 GAUGE MINIMUM, AT LEAST 90 DEGREE C, 600 V GAS & OIL RESISTANT UL LISTED WIRE. WIRES BACK TO INTERCOM POWER MUST BE RUN IN SEPARATE DEDICATED LISTED METALLIC CONDUIT.
9. BALANCE VAPOR RECOVERY AND WAYNEVAC VAPOR RECOVERY CONNECTIONS ARE IN DIFFERENT LOCATIONS.



BASE DIMENSIONS

A 3-1/2 INCH MINIMUM CLEARANCE FROM THE OUTSIDE SURFACE OF COLUMN IS RECOMMENDED TO ALLOW REMOVAL OF COVER PANELS FOR SERVICE.



11-7243-C REV B

TOLERANCES
± 1/4 INCH
UNLESS OTHERWISE SPECIFIED

Figure C-12. 11-7243-C Installation Instructions - 3V591D (Remote)

NOTES:

1. ALL PIPING AND ELECTRICAL INSTALLATIONS MUST CONFORM TO ALL APPLICABLE REGULATIONS INCLUDING NFPA30, FLAMMABLE & COMBUSTIBLE LIQUIDS CODE; NFPA30A, AUTOMOTIVE & MARINE SERVICE STATION CODE; NFPA70, NATIONAL ELECTRICAL CODE. DO NOT "DAISY CHAIN" THE DISPENSER POWER CIRCUIT TO ANY OTHER EQUIPMENT.
2. SLOPE PIPING FROM TANK TO DISPENSER UPWARDS, AVOIDING AIR OR LIQUID TRAPS. RECOMMEND A 3 FT. MINIMUM BETWEEN THE INLET UNION TO UNDERGROUND TANK LIQUID SURFACE. IF NOT PROVIDED, WAYNE P/N 129881 MUST BE INSTALLED IN PUMPING UNIT AIR SEPARATOR FOR OPTIMUM PERFORMANCE. SEE INSTALLATION MANUAL.
3. USE UNIVERSAL JOINTS AT DISPENSER TO ALLOW FOR GROUND MOVEMENT.
4. USE ANY OR ALL CONDUIT TAPS SHOWN TO MAKE ELECTRICAL CONNECTIONS TO DISPENSER.
5. FIRMLY MOUNT THE DISPENSER TO THE ISLAND USING THE ANCHOR BOLT LOCATIONS SHOWN. SEE ANCHORING DETAIL. USE OF ALL ANCHORING LOCATIONS RECOMMENDED.
6. BREAKAWAY DEVICES ARE EXAMPLES OF REQUIREMENTS STATED IN THE NFPA30A AUTOMOTIVE & MARINE SERVICE STATION CODE. THESE, AS WELL AS ANY OTHER SAFETY DEVICES REQUIRED BY NFPA30 & 30A, MUST BE INSTALLED AND MAINTAINED PER THE MANUFACTURER'S INSTRUCTIONS.
7. THE LOW AND HIGH FEED STOCKS MUST BE PLUMBED AS SHOWN FOR THE DISPENSER TO WORK PROPERLY.
8. OPTIONAL SPEAKER INSTALLATION WIRING IS LOCATED IN JUNCTION BOX. CONNECT INTERCOM CIRCUIT TO A LISTED CLASS 2 POWERED INTERCOM ONLY WITH 18 GAUGE MINIMUM, AT LEAST 90 DEGREE C, 600 V GAS & OIL RESISTANT UL LISTED WIRE. WIRES BACK TO INTERCOM POWER MUST BE RUN IN SEPARATE DEDICATED LISTED METALLIC CONDUIT.
9. BALANCE VAPOR RECOVERY AND WAYNEVAC VAPOR RECOVERY CONNECTIONS ARE IN DIFFERENT LOCATIONS.

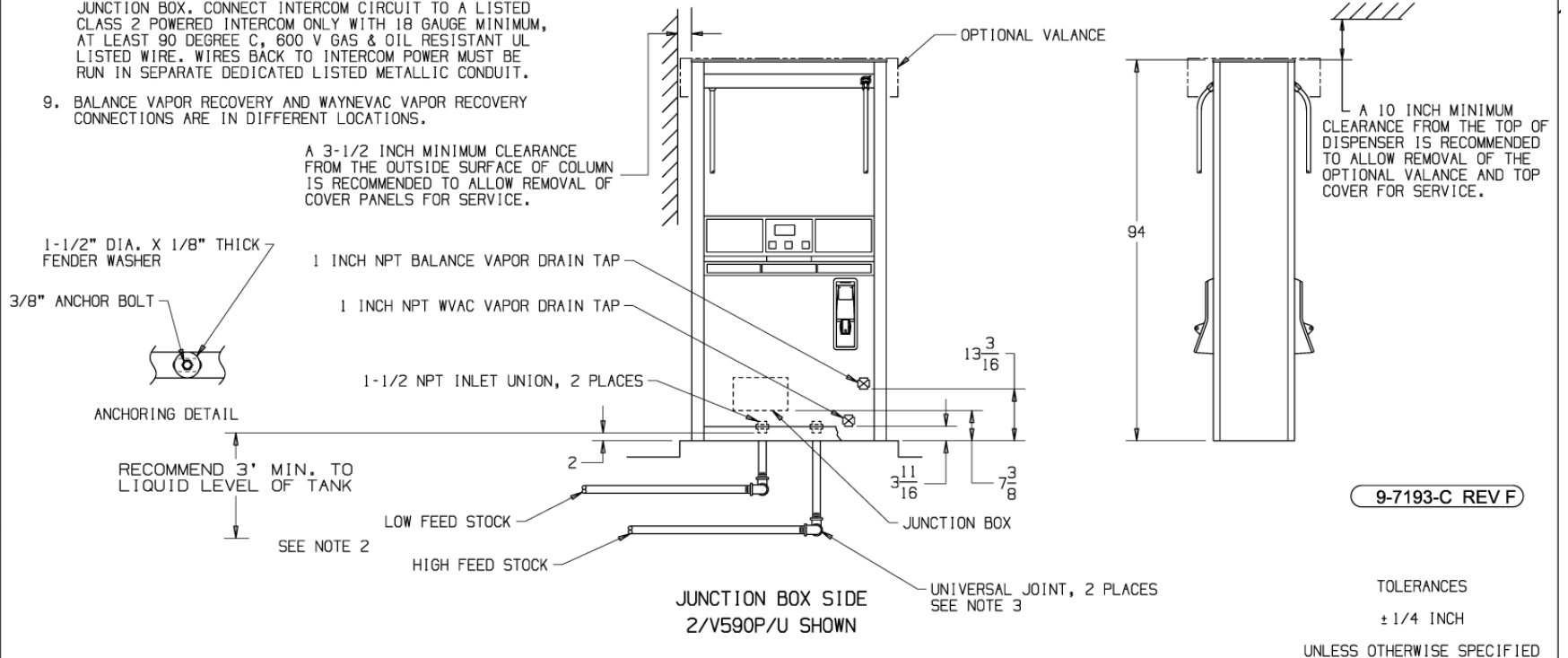
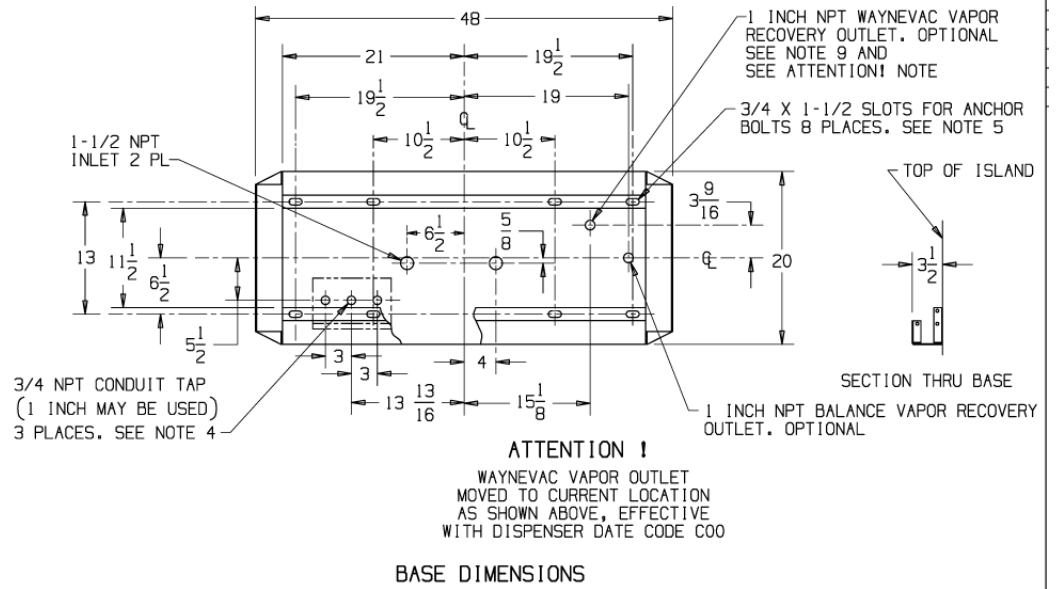


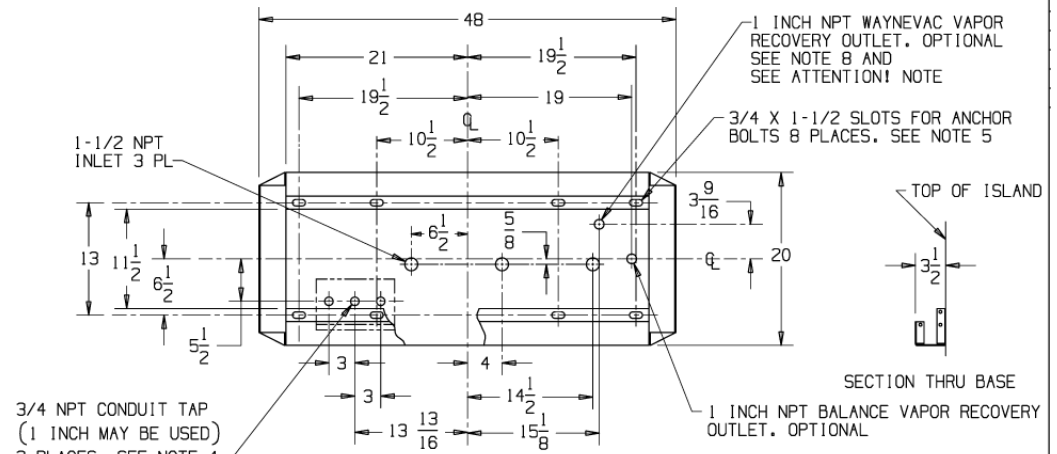
Figure C-13. 9-7193-C Installation Instructions - 3/V590P/U and 3/V595P/U (Suction)

9-7193-C REV F

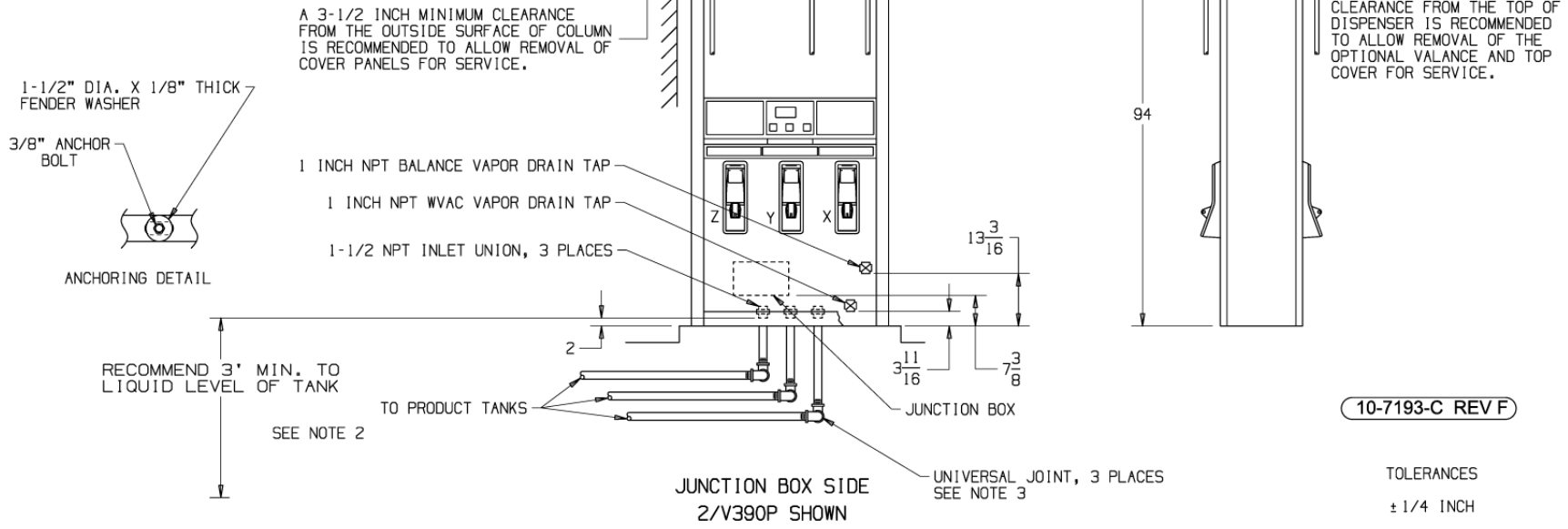
TOLERANCES
± 1/4 INCH
UNLESS OTHERWISE SPECIFIED

NOTES:

1. ALL PIPING AND ELECTRICAL INSTALLATIONS MUST CONFORM TO ALL APPLICABLE REGULATIONS INCLUDING NFPA30, FLAMMABLE & COMBUSTIBLE LIQUIDS CODE; NFPA30A, AUTOMOTIVE & MARINE SERVICE STATION CODE; NFPA70, NATIONAL ELECTRICAL CODE. DO NOT "DAISY CHAIN" THE DISPENSER POWER CIRCUIT TO ANY OTHER EQUIPMENT.
2. SLOPE PIPING FROM TANK TO DISPENSER UPWARDS, AVOIDING AIR OR LIQUID TRAPS. RECOMMEND A 3 FT. MINIMUM BETWEEN THE INLET UNION TO UNDERGROUND TANK LIQUID SURFACE. IF NOT PROVIDED, WAYNE P/N 129881 MUST BE INSTALLED IN PUMPING UNIT AIR SEPARATOR FOR OPTIMUM PERFORMANCE. SEE INSTALLATION MANUAL.
3. USE UNIVERSAL JOINTS AT DISPENSER TO ALLOW FOR GROUND MOVEMENT.
4. USE ANY OR ALL CONDUIT TAPS SHOWN TO MAKE ELECTRICAL CONNECTIONS TO DISPENSER.
5. FIRMLY MOUNT THE DISPENSER TO THE ISLAND USING THE ANCHOR BOLT LOCATIONS SHOWN. SEE ANCHORING DETAIL. USE OF ALL ANCHORING LOCATIONS RECOMMENDED.
6. BREAKAWAY DEVICES ARE EXAMPLES OF REQUIREMENTS STATED IN THE NFPA30A AUTOMOTIVE & MARINE SERVICE STATION CODE. THESE, AS WELL AS ANY OTHER SAFETY DEVICES REQUIRED BY NFPA30 & 30A, MUST BE INSTALLED AND MAINTAINED PER THE MANUFACTURER'S INSTRUCTIONS.
7. OPTIONAL SPEAKER INSTALLATION WIRING IS LOCATED IN JUNCTION BOX. CONNECT INTERCOM CIRCUIT TO A LISTED CLASS 2 POWERED INTERCOM ONLY WITH 18 GAUGE MINIMUM, AT LEAST 90 DEGREE C, 600 V GAS & OIL RESISTANT UL LISTED WIRE. WIRES BACK TO INTERCOM POWER MUST BE RUN IN SEPARATE DEDICATED LISTED METALLIC CONDUIT.
8. BALANCE VAPOR RECOVERY AND WAYNEVAC VAPOR RECOVERY CONNECTIONS ARE IN DIFFERENT LOCATIONS.



BASE DIMENSIONS



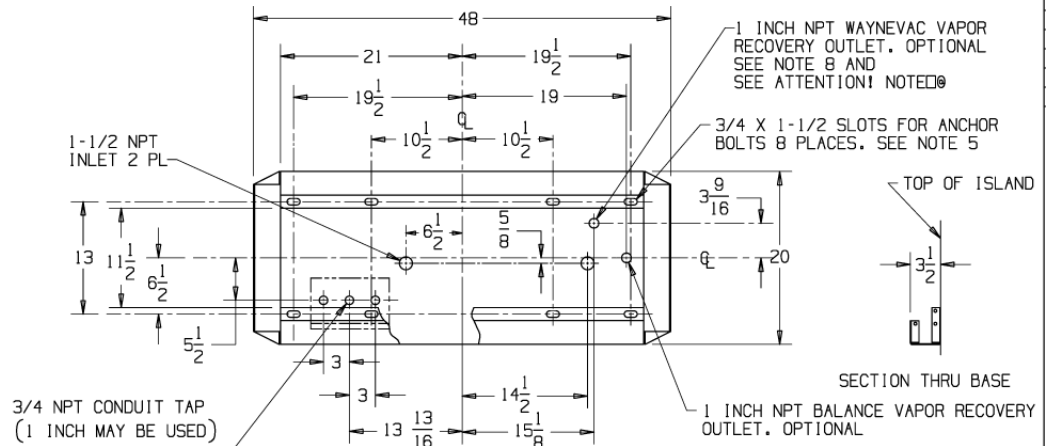
10-7193-C REV F

TOLERANCES
± 1/4 INCH
UNLESS OTHERWISE SPECIFIED

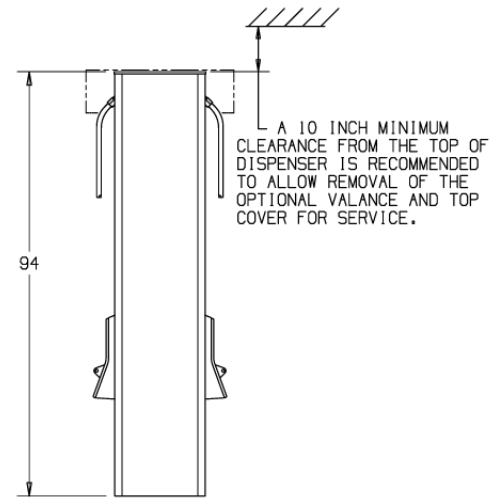
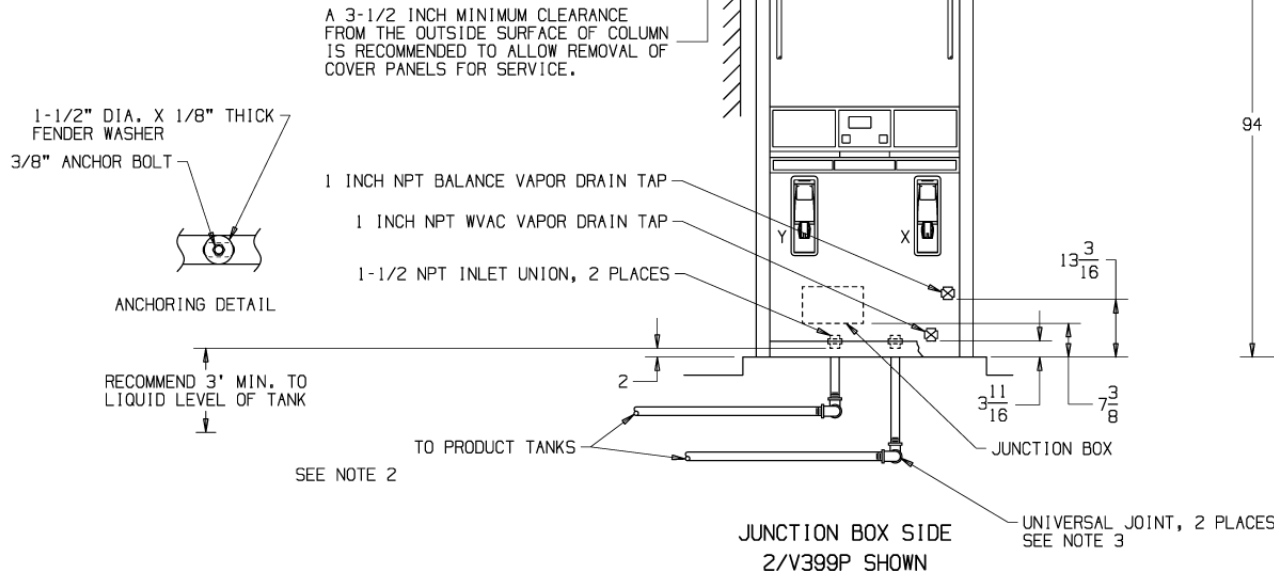
Figure C-14. 10-7193-C Installation Instructions - 3/V390P and 3/V390P/U (Suction)

NOTES:

1. ALL PIPING AND ELECTRICAL INSTALLATIONS MUST CONFORM TO ALL APPLICABLE REGULATIONS INCLUDING NFPA30, FLAMMABLE & COMBUSTIBLE LIQUIDS CODE; NFPA30A, AUTOMOTIVE & MARINE SERVICE STATION CODE; NFPA70, NATIONAL ELECTRICAL CODE. DO NOT "DAISY CHAIN" THE DISPENSER POWER CIRCUIT TO ANY OTHER EQUIPMENT.
2. SLOPE PIPING FROM TANK TO DISPENSER UPWARDS, AVOIDING AIR OR LIQUID TRAPS. RECOMMEND A 3 FT. MINIMUM BETWEEN THE INLET UNION TO UNDERGROUND TANK LIQUID SURFACE. IF NOT PROVIDED, WAYNE P/N 129881 MUST BE INSTALLED IN PUMPING UNIT AIR SEPARATOR FOR OPTIMUM PERFORMANCE. SEE INSTALLATION MANUAL.
3. USE UNIVERSAL JOINTS AT DISPENSER TO ALLOW FOR GROUND MOVEMENT.
4. USE ANY OR ALL CONDUIT TAPS SHOWN TO MAKE ELECTRICAL CONNECTIONS TO DISPENSER.
5. FIRMLY MOUNT THE DISPENSER TO THE ISLAND USING THE ANCHOR BOLT LOCATIONS SHOWN. SEE ANCHORING DETAIL. USE OF ALL ANCHORING LOCATIONS RECOMMENDED.
6. BREAKAWAY DEVICES ARE EXAMPLES OF REQUIREMENTS STATED IN THE NFPA30A AUTOMOTIVE & MARINE SERVICE STATION CODE. THESE, AS WELL AS ANY OTHER SAFETY DEVICES REQUIRED BY NFPA30 & 30A, MUST BE INSTALLED AND MAINTAINED PER THE MANUFACTURER'S INSTRUCTIONS.
7. OPTIONAL SPEAKER INSTALLATION WIRING IS LOCATED IN JUNCTION BOX. CONNECT INTERCOM CIRCUIT TO A LISTED CLASS 2 POWERED INTERCOM ONLY WITH 18 GAUGE MINIMUM, AT LEAST 90 DEGREE C, 600 V GAS & OIL RESISTANT UL LISTED WIRE. WIRES BACK TO INTERCOM POWER MUST BE RUN IN SEPARATE DEDICATED LISTED METALLIC CONDUIT.
8. BALANCE VAPOR RECOVERY AND WAYNEVAC VAPOR RECOVERY CONNECTIONS ARE IN DIFFERENT LOCATIONS.



BASE DIMENSIONS



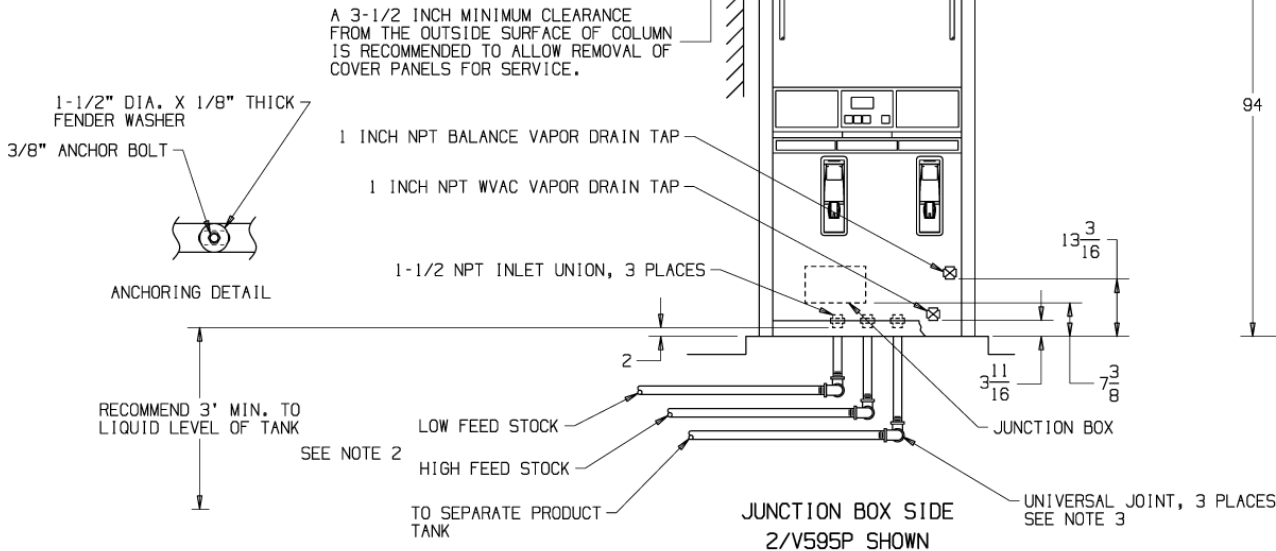
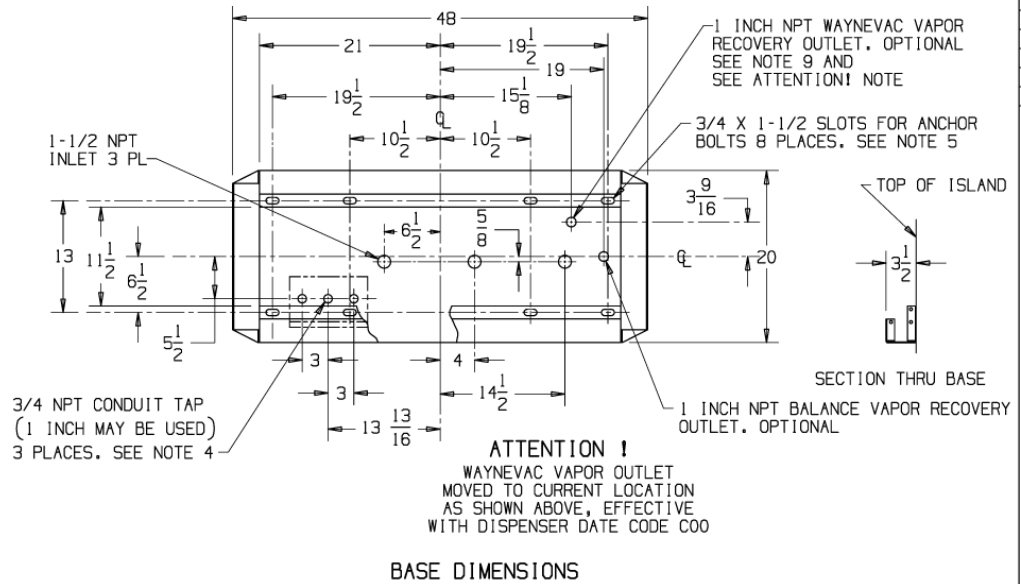
11-7193-C REV F

TOLERANCES
± 1/4 INCH
UNLESS OTHERWISE SPECIFIED

Figure C-15. 11-7193-C Installation Instructions - 3/V399P (Suction)

NOTES:

1. ALL PIPING AND ELECTRICAL INSTALLATIONS MUST CONFORM TO ALL APPLICABLE REGULATIONS INCLUDING NFPA30, FLAMMABLE & COMBUSTIBLE LIQUIDS CODE; NFPA30A, AUTOMOTIVE & MARINE SERVICE STATION CODE; NFPA70, NATIONAL ELECTRICAL CODE. DO NOT "DAISY CHAIN" THE DISPENSER POWER CIRCUIT TO ANY OTHER EQUIPMENT.
2. SLOPE PIPING FROM TANK TO DISPENSER UPWARDS, AVOIDING AIR OR LIQUID TRAPS. RECOMMEND A 3 FT. MINIMUM BETWEEN THE INLET UNION TO UNDERGROUND TANK LIQUID SURFACE. IF NOT PROVIDED, WAYNE P/N 129881 MUST BE INSTALLED IN PUMPING UNIT AIR SEPARATOR FOR OPTIMUM PERFORMANCE. SEE INSTALLATION MANUAL.
3. USE UNIVERSAL JOINTS AT DISPENSER TO ALLOW FOR GROUND MOVEMENT.
4. USE ANY OR ALL CONDUIT TAPS SHOWN TO MAKE ELECTRICAL CONNECTIONS TO DISPENSER.
5. FIRMLY MOUNT THE DISPENSER TO THE ISLAND USING THE ANCHOR BOLT LOCATIONS SHOWN. SEE ANCHORING DETAIL. USE OF ALL ANCHORING LOCATIONS RECOMMENDED.
6. BREAKAWAY DEVICES ARE EXAMPLES OF REQUIREMENTS STATED IN THE NFPA30A AUTOMOTIVE & MARINE SERVICE STATION CODE. THESE, AS WELL AS ANY OTHER SAFETY DEVICES REQUIRED BY NFPA30 & 30A, MUST BE INSTALLED AND MAINTAINED PER THE MANUFACTURER'S INSTRUCTIONS.
7. THE LOW AND HIGH FEED STOCKS MUST BE PLUMBED AS SHOWN FOR THE DISPENSER TO WORK PROPERLY.
8. OPTIONAL SPEAKER INSTALLATION WIRING IS LOCATED IN JUNCTION BOX. CONNECT INTERCOM CIRCUIT TO A LISTED CLASS 2 POWERED INTERCOM ONLY WITH 18 GAUGE MINIMUM, AT LEAST 90 DEGREE C, 600 V GAS & OIL RESISTANT UL LISTED WIRE. WIRES BACK TO INTERCOM POWER MUST BE RUN IN SEPARATE DEDICATED LISTED METALLIC CONDUIT.
9. BALANCE VAPOR RECOVERY AND WAYNEVAC VAPOR RECOVERY CONNECTIONS ARE IN DIFFERENT LOCATIONS.



A 10 INCH MINIMUM CLEARANCE FROM THE TOP OF DISPENSER IS RECOMMENDED TO ALLOW REMOVAL OF THE OPTIONAL VALANCE AND TOP COVER FOR SERVICE.

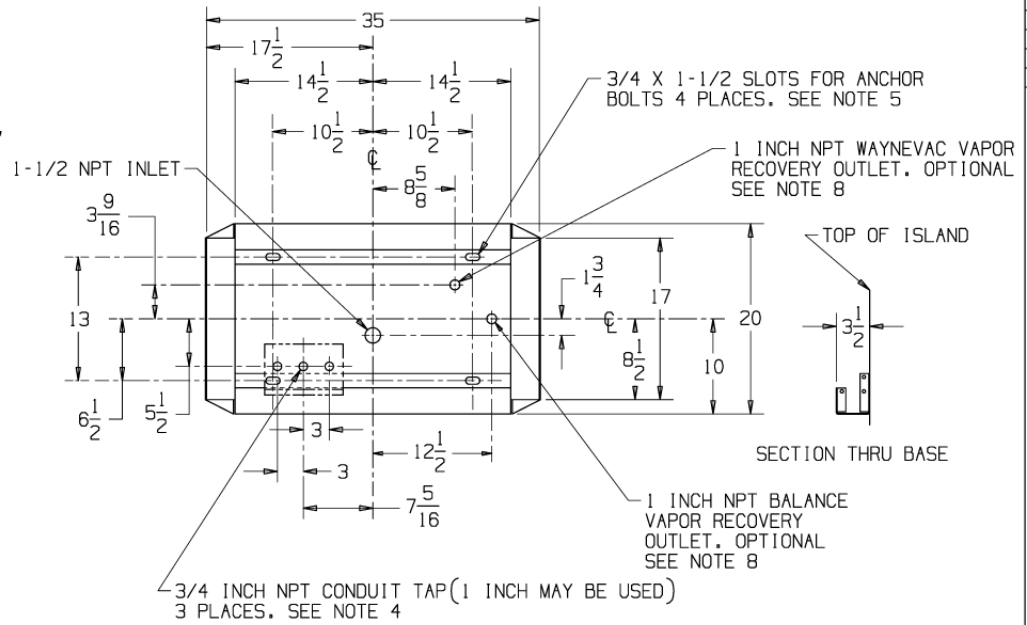
12-7193-C REV F

TOLERANCES ± 1/4 INCH UNLESS OTHERWISE SPECIFIED

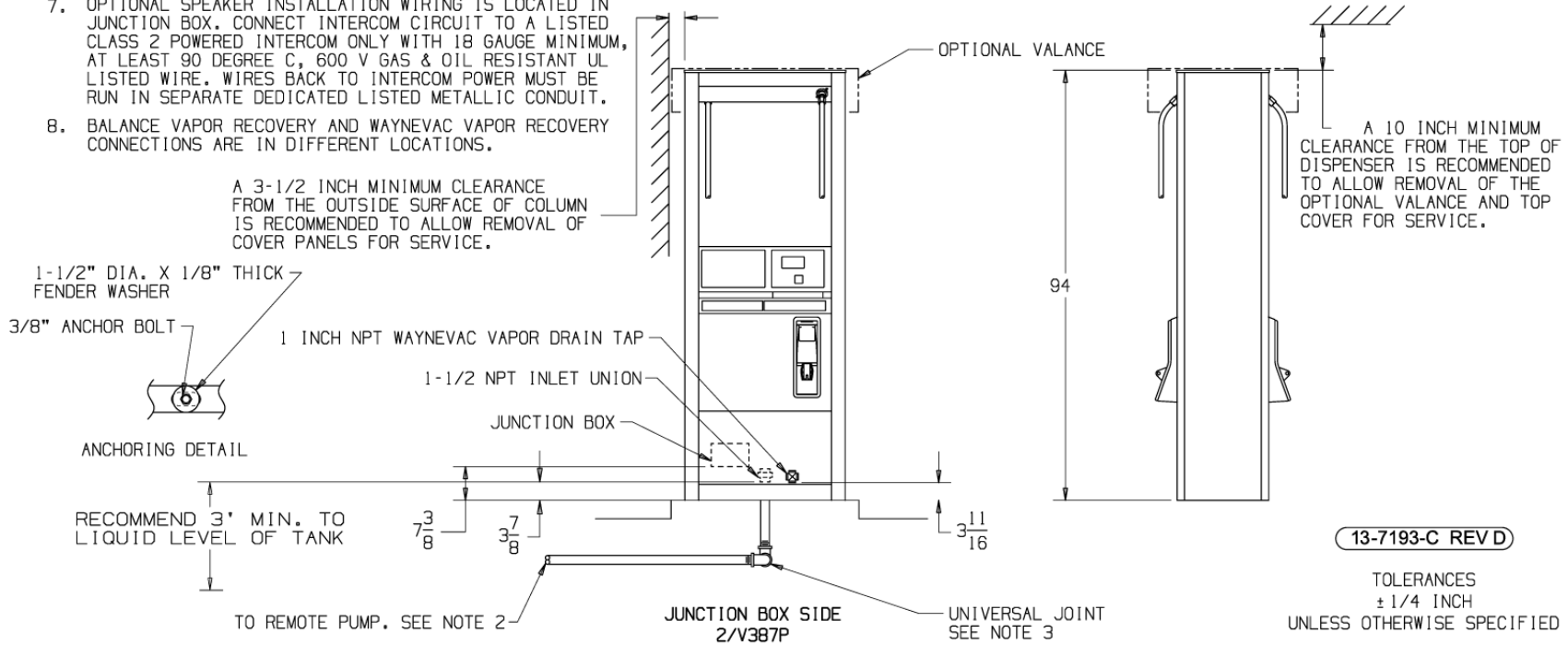
Figure C-16. 12-7193-C Installation Instructions - 3/V591P and 3/V595P (Suction) - Except 3/V595P/U See 9-7193-C

NOTES:

1. ALL PIPING AND ELECTRICAL INSTALLATIONS MUST CONFORM TO ALL APPLICABLE REGULATIONS INCLUDING NFPA30, FLAMMABLE & COMBUSTIBLE LIQUIDS CODE; NFPA30A, AUTOMOTIVE & MARINE SERVICE STATION CODE; NFPA70, NATIONAL ELECTRICAL CODE. DO NOT "DAISY CHAIN" THE DISPENSER POWER CIRCUIT TO ANY OTHER EQUIPMENT
2. SLOPE PIPING FROM TANK TO DISPENSER UPWARDS, AVOIDING AIR OR LIQUID TRAPS. RECOMMEND A 3 FT. MINIMUM BETWEEN THE INLET UNION TO UNDERGROUND TANK LIQUID SURFACE. IF NOT PROVIDED, WAYNE P/N 129881 MUST BE INSTALLED IN PUMPING UNIT AIR SEPARATOR FOR OPTIMUM PERFORMANCE. SEE INSTALLATION MANUAL.
3. USE UNIVERSAL JOINT AT DISPENSER TO ALLOW FOR GROUND MOVEMENT.
4. USE ANY OR ALL CONDUIT TAPS SHOWN TO MAKE ELECTRICAL CONNECTIONS TO DISPENSER.
5. FIRMLY MOUNT THE DISPENSER TO THE ISLAND USING THE ANCHOR BOLT LOCATIONS SHOWN. SEE ANCHORING DETAIL. USE OF ALL ANCHORING LOCATIONS RECOMMENDED.
6. BREAKAWAY DEVICES ARE EXAMPLES OF REQUIREMENTS STATED IN THE NFPA30A AUTOMOTIVE & MARINE SERVICE STATION CODE. THESE, AS WELL AS ANY OTHER SAFETY DEVICES REQUIRED BY NFPA30 & 30A, MUST BE INSTALLED AND MAINTAINED PER THE MANUFACTURER'S INSTRUCTIONS.
7. OPTIONAL SPEAKER INSTALLATION WIRING IS LOCATED IN JUNCTION BOX. CONNECT INTERCOM CIRCUIT TO A LISTED CLASS 2 POWERED INTERCOM ONLY WITH 18 GAUGE MINIMUM, AT LEAST 90 DEGREE C, 600 V GAS & OIL RESISTANT UL LISTED WIRE. WIRES BACK TO INTERCOM POWER MUST BE RUN IN SEPARATE DEDICATED LISTED METALLIC CONDUIT.
8. BALANCE VAPOR RECOVERY AND WAYNEVAC VAPOR RECOVERY CONNECTIONS ARE IN DIFFERENT LOCATIONS.



BASE DIMENSIONS



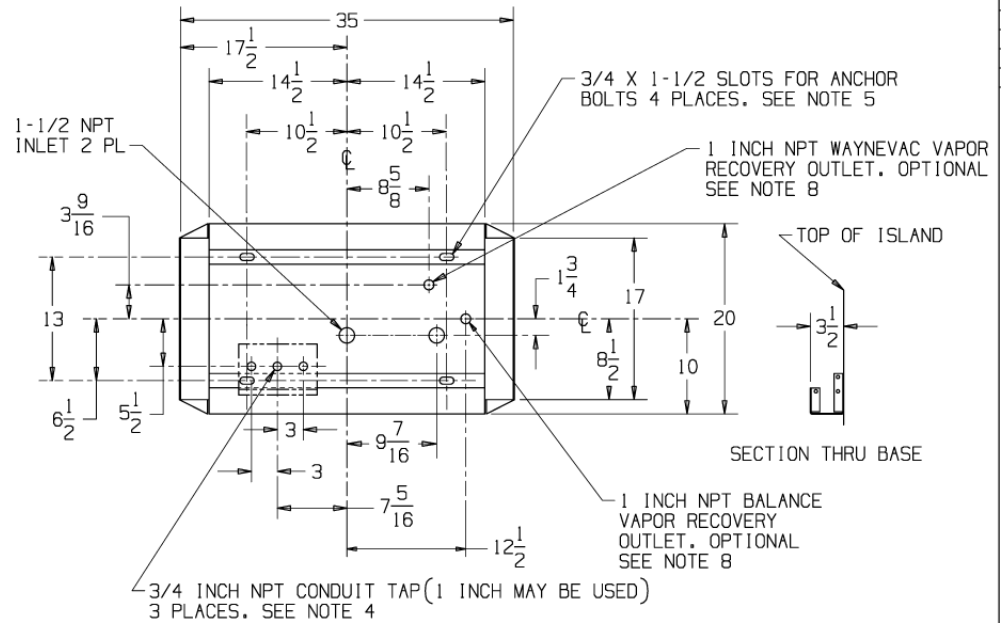
13-7193-C REV D

TOLERANCES
± 1/4 INCH
UNLESS OTHERWISE SPECIFIED

Figure C-17. 13-7193-C Installation Instructions - 3/V387P (Suction)

NOTES:

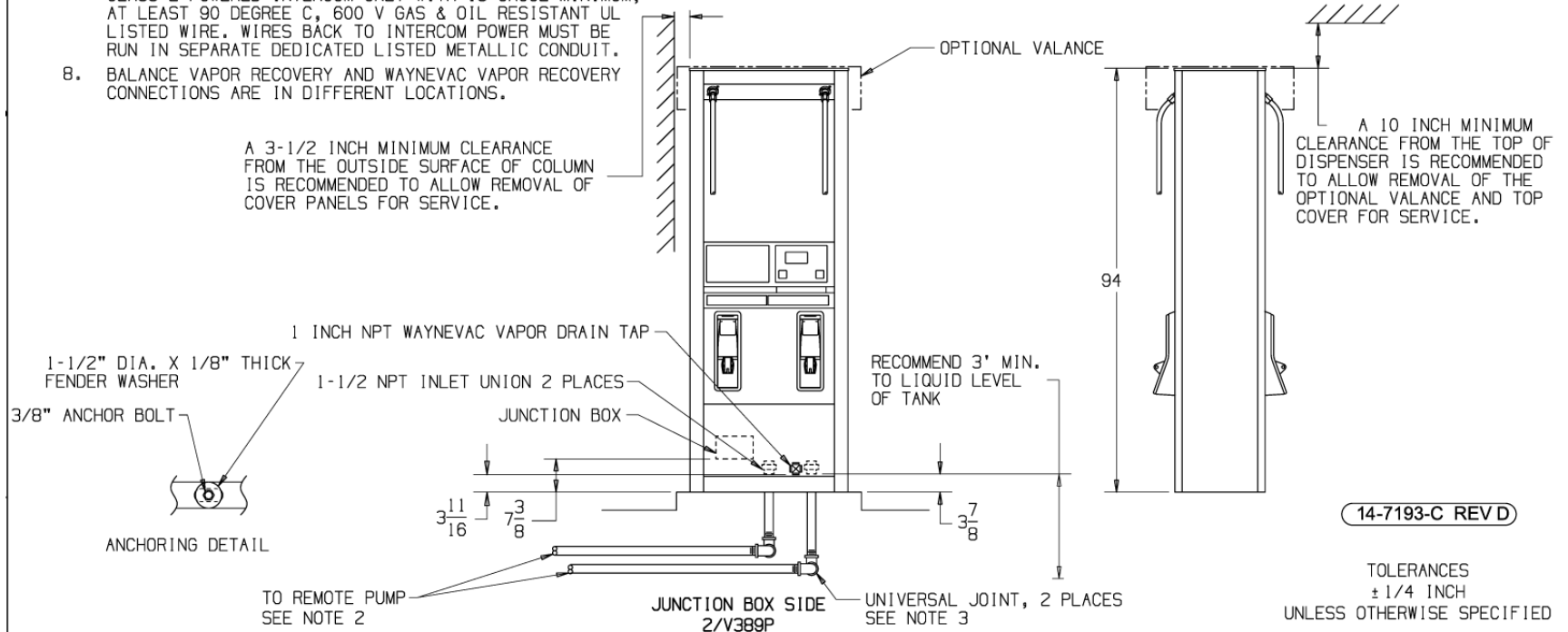
1. ALL PIPING AND ELECTRICAL INSTALLATIONS MUST CONFORM TO ALL APPLICABLE REGULATIONS INCLUDING NFPA30, FLAMMABLE & COMBUSTIBLE LIQUIDS CODE; NFPA30A, AUTOMOTIVE & MARINE SERVICE STATION CODE; NFPA70, NATIONAL ELECTRICAL CODE. DO NOT "DAISY CHAIN" THE DISPENSER POWER CIRCUIT TO ANY OTHER EQUIPMENT
2. SLOPE PIPING FROM TANK TO DISPENSER UPWARDS, AVOIDING AIR OR LIQUID TRAPS. RECOMMEND A 3 FT. MINIMUM BETWEEN THE INLET UNION TO UNDERGROUND TANK LIQUID SURFACE. IF NOT PROVIDED, WAYNE P/N 129881 MUST BE INSTALLED IN PUMPING UNIT AIR SEPARATOR FOR OPTIMUM PERFORMANCE. SEE INSTALLATION MANUAL.D
3. USE UNIVERSAL JOINTS AT DISPENSER TO ALLOW FOR GROUND MOVEMENT.
4. USE ANY OR ALL CONDUIT TAPS SHOWN TO MAKE ELECTRICAL CONNECTIONS TO DISPENSER.
5. FIRMLY MOUNT THE DISPENSER TO THE ISLAND USING THE ANCHOR BOLT LOCATIONS SHOWN. SEE ANCHORING DETAIL. USE OF ALL ANCHORING LOCATIONS RECOMMENDED.
6. BREAKAWAY DEVICES ARE EXAMPLES OF REQUIREMENTS STATED IN THE NFPA30A AUTOMOTIVE & MARINE SERVICE STATION CODE. THESE, AS WELL AS ANY OTHER SAFETY DEVICES REQUIRED BY NFPA30 & 30A, MUST BE INSTALLED AND MAINTAINED PER THE MANUFACTURER'S INSTRUCTIONS.
7. OPTIONAL SPEAKER INSTALLATION WIRING IS LOCATED IN JUNCTION BOX. CONNECT INTERCOM CIRCUIT TO A LISTED CLASS 2 POWERED INTERCOM ONLY WITH 18 GAUGE MINIMUM, AT LEAST 90 DEGREE C, 600 V GAS & OIL RESISTANT UL LISTED WIRE. WIRES BACK TO INTERCOM POWER MUST BE RUN IN SEPARATE DEDICATED LISTED METALLIC CONDUIT.
8. BALANCE VAPOR RECOVERY AND WAYNEVAC VAPOR RECOVERY CONNECTIONS ARE IN DIFFERENT LOCATIONS.



BASE DIMENSIONS

A 3-1/2 INCH MINIMUM CLEARANCE FROM THE OUTSIDE SURFACE OF COLUMN IS RECOMMENDED TO ALLOW REMOVAL OF COVER PANELS FOR SERVICE.

A 10 INCH MINIMUM CLEARANCE FROM THE TOP OF DISPENSER IS RECOMMENDED TO ALLOW REMOVAL OF THE OPTIONAL VALANCE AND TOP COVER FOR SERVICE.



14-7193-C REV D

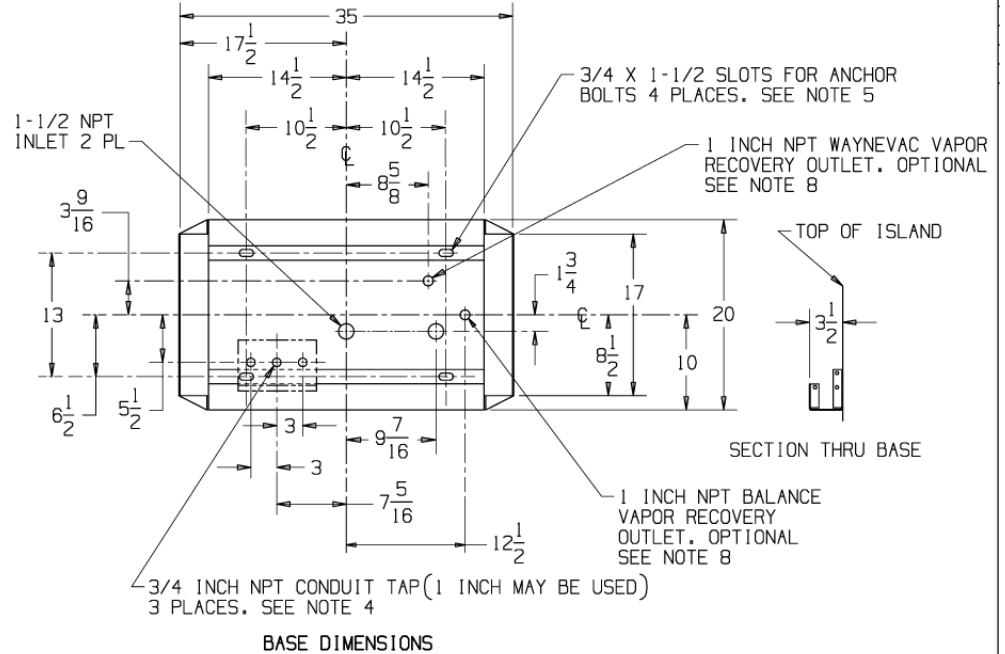
TOLERANCES
± 1/4 INCH
UNLESS OTHERWISE SPECIFIED

Figure C-18. 14-7193-C Installation Instructions - 3/V389P (Suction)

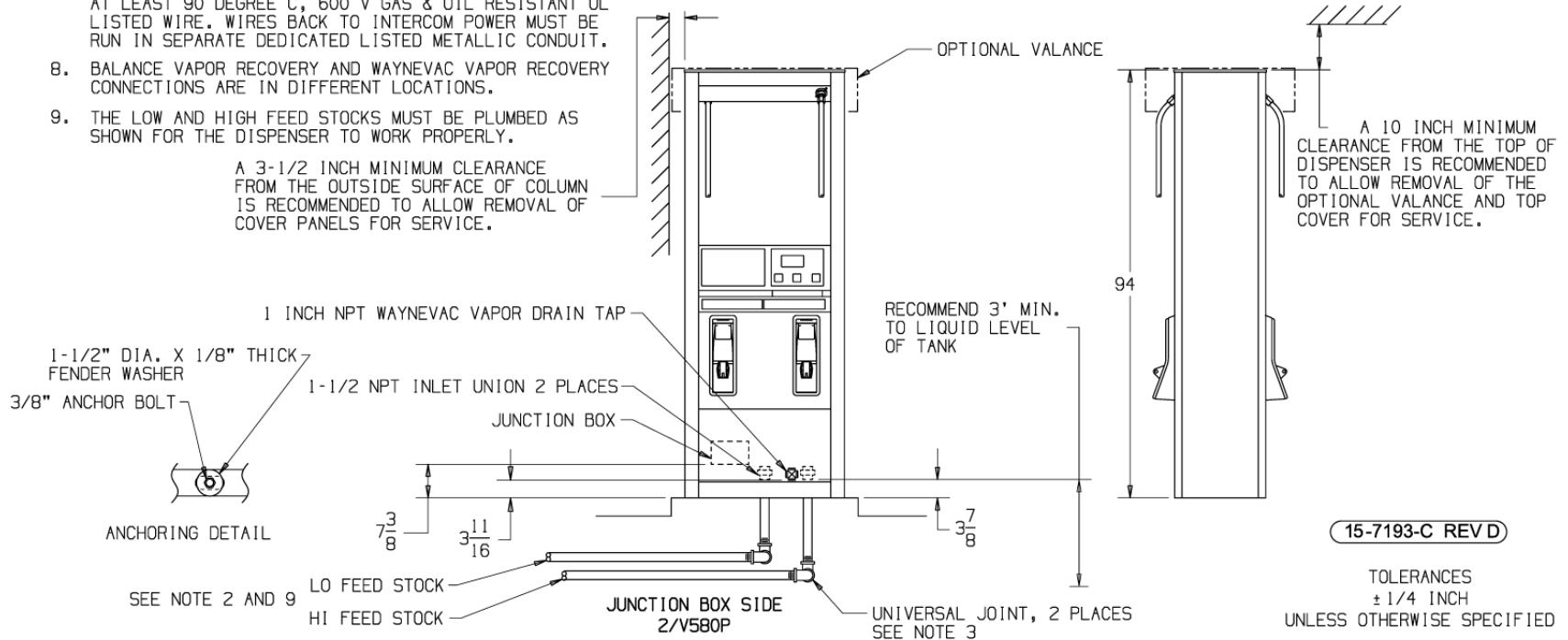
NOTES:

1. ALL PIPING AND ELECTRICAL INSTALLATIONS MUST CONFORM TO ALL APPLICABLE REGULATIONS INCLUDING NFPA30, FLAMMABLE & COMBUSTIBLE LIQUIDS CODE; NFPA30A, AUTOMOTIVE & MARINE SERVICE STATION CODE; NFPA70, NATIONAL ELECTRICAL CODE. DO NOT "DAISY CHAIN" THE DISPENSER POWER CIRCUIT TO ANY OTHER EQUIPMENT
2. SLOPE PIPING FROM TANK TO DISPENSER UPWARDS, AVOIDING AIR OR LIQUID TRAPS. RECOMMEND A 3 FT. MINIMUM BETWEEN THE INLET UNION TO UNDERGROUND TANK LIQUID SURFACE. IF NOT PROVIDED, WAYNE P/N 129881 MUST BE INSTALLED IN PUMPING UNIT AIR SEPARATOR FOR OPTIMUM PERFORMANCE. SEE INSTALLATION MANUAL.
3. USE UNIVERSAL JOINTS AT DISPENSER TO ALLOW FOR GROUND MOVEMENT.
4. USE ANY OR ALL CONDUIT TAPS SHOWN TO MAKE ELECTRICAL CONNECTIONS TO DISPENSER.
5. FIRMLY MOUNT THE DISPENSER TO THE ISLAND USING THE ANCHOR BOLT LOCATIONS SHOWN. SEE ANCHORING DETAIL. USE OF ALL ANCHORING LOCATIONS RECOMMENDED.
6. BREAKAWAY DEVICES ARE EXAMPLES OF REQUIREMENTS STATED IN THE NFPA30A AUTOMOTIVE & MARINE SERVICE STATION CODE. THESE, AS WELL AS ANY OTHER SAFETY DEVICES REQUIRED BY NFPA30 & 30A, MUST BE INSTALLED AND MAINTAINED PER THE MANUFACTURER'S INSTRUCTIONS.
7. OPTIONAL SPEAKER INSTALLATION WIRING IS LOCATED IN JUNCTION BOX. CONNECT INTERCOM CIRCUIT TO A LISTED CLASS 2 POWERED INTERCOM ONLY WITH 18 GAUGE MINIMUM, AT LEAST 90 DEGREE C, 600 V GAS & OIL RESISTANT UL LISTED WIRE. WIRES BACK TO INTERCOM POWER MUST BE RUN IN SEPARATE DEDICATED LISTED METALLIC CONDUIT.
8. BALANCE VAPOR RECOVERY AND WAYNEVAC VAPOR RECOVERY CONNECTIONS ARE IN DIFFERENT LOCATIONS.
9. THE LOW AND HIGH FEED STOCKS MUST BE PLUMBED AS SHOWN FOR THE DISPENSER TO WORK PROPERLY.

A 3-1/2 INCH MINIMUM CLEARANCE FROM THE OUTSIDE SURFACE OF COLUMN IS RECOMMENDED TO ALLOW REMOVAL OF COVER PANELS FOR SERVICE.



BASE DIMENSIONS



TOLERANCES
± 1/4 INCH
UNLESS OTHERWISE SPECIFIED

Figure C-19. 15-7193-C Installation Instructions - 3/V580P and 3/V585P (Suction)