

8

7

6

5

4

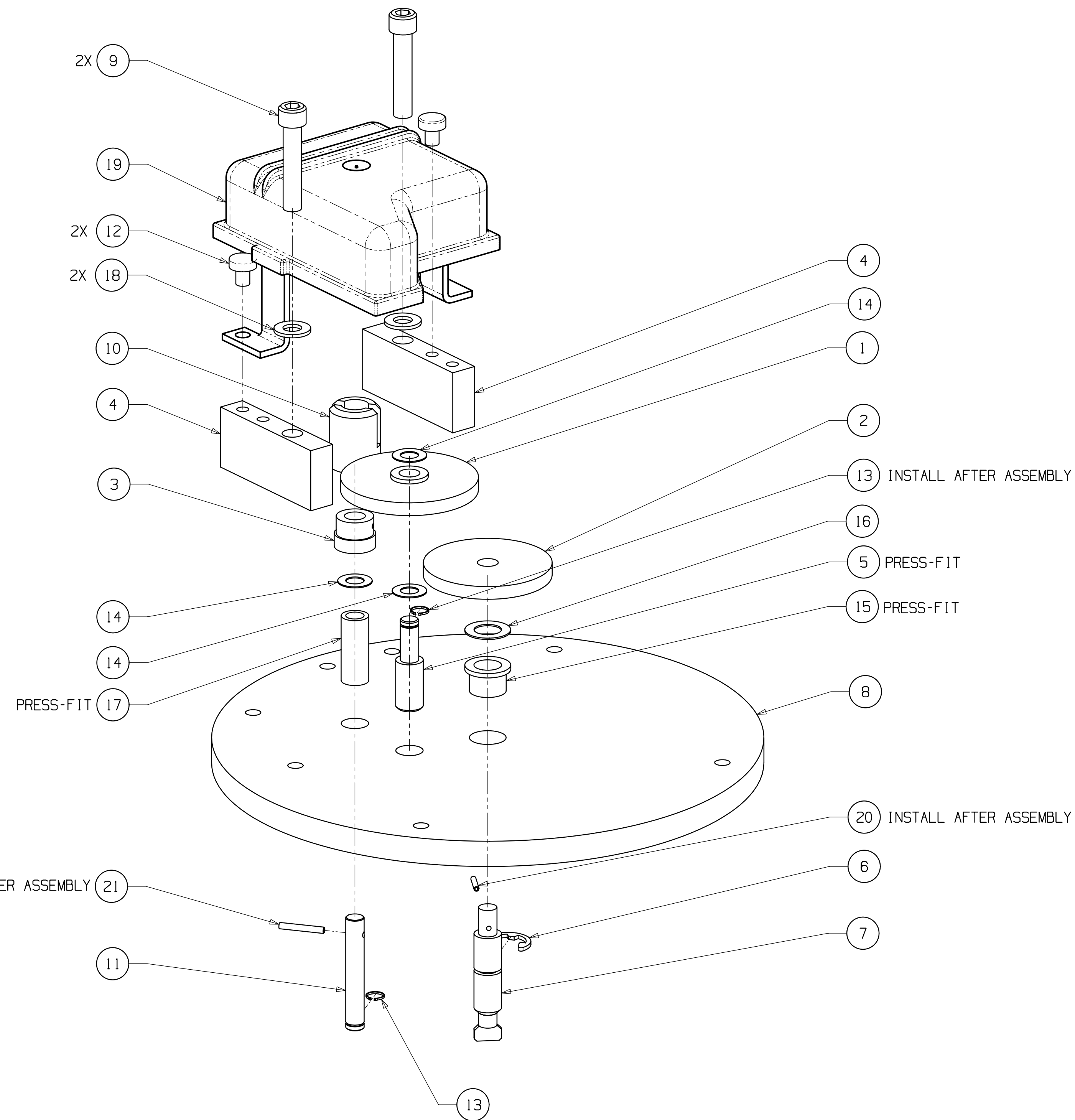
3

2

1

SHARED BY

REVISIONS						
LTR	NO.	DESCRIPTION	REV BY	DATE	RCD BY	DATE
A		RELEASED FOR PRODUCTION PER ER				
B		REDRAWN PER ECO 15707	CCH	25OCT02		



DO NOT SCALE DRAWING		DRAWN	CECI HANSON	15OCT02	DRESSER WAYNE Dresser, Inc Austin, TX	
UNLESS OTHERWISE SPECIFIED DIMENSIONS ARE IN INCHES		DESIGNED			TITLE	
ANGLES +/- .X +/- .XX +/- .XXX +/-		APPROVED	JAMES CHRIST		ASSY, GEAR PLATE, HS1	
PART SHALL BE FREE OF BURRS		SH MET UNFOLD	REF SET	DATE	SIZE	
BREAK SHARP EDGES	REV.....	DATE.....	DRAWING NO.	
<small> PROPRIETARY INFORMATION - THIS DOCUMENT CONTAINS PROPRIETARY AND CONFIDENTIAL INFORMATION. IT IS LOANED FOR LIMITED PURPOSES ONLY AND REMAINS THE PROPERTY OF DRESSER WAYNE, DRESSER, INC. IT MAY NOT BE REPRODUCED IN WHOLE OR IN PART WITHOUT THE WRITTEN CONSENT OF DRESSER WAYNE AND MUST NOT BE DISCLOSED TO PERSONS NOT HAVING NEED OF SUCH DISCLOSURE CONSISTENT WITH THE PURPOSE OF THE LOAN. IT MUST NOT BE USED FOR ANY PURPOSE OTHER THAN FOR THE BENEFIT OF DRESSER WAYNE. THIS DOCUMENT IS TO BE RETURNED TO DRESSER WAYNE UPON REQUEST AND/OR UPON COMPLETION OF THE USE FOR WHICH IT WAS LOANED. </small>		THIRD ANGLE PROJECTION		INITIALS		REV
				DRAWING NO.		B
				SCALE NONE		SHT 1 OF 1
				DRAWING NO.		000-VH5029-000

8

7

6

5

4

3

2

1

A

A

B

B

C

C

D

D

PARENT PART: 000-VH5029-
ASSY, GEAR PLATE, HS1

REV:

ITEM NUM	COMPONENT PART	DESCRIPTION	QTY PER
1	000-201553-	GEAR	1
2	888916-001	GEAR-56T,20 PA,1.813"	1
3	888918-001	GEAR-18T,20 PA,0.625"	1
4	000-VH5034-	SPACER I.S.B. PULSER	2
5	000-VH5024-	IDLER GEAR SHAFT	1
6	000-903863-	E RING	1
7	000-VH5022-	SHAFT DRIVE VISTA GEAR PL	1
8	000-VH5020-J21	GEAR PLATE, HS1-J21	1
9	000-916852-	SOHC S1/4-20X1 1/4 ZN	2
10	888911-001	TRIP SHAFT COUPLING	1
11	000-VH5035-	DRIVE SHAFT - COUPLING	1
12	6001101	SCR 10-32X1/4 PHMSPHSSPA	2
13	000-907135-	RING M#5100-25H TRUARC	2
14	002-122583-	SHIM W.252X15/32X.015 SS	3
15	000-916550-	BEARING	1
16	888912-001	SHIM 3/8IDX5/8ODX.020,STL	1
17	888980-001	BEARING, DRIVE SHAFT	1
18	000-905245-	WSHR 1/4 FWSTCD	2
19	001-300817-	PULSER,ASSY	1
20	000-918796-	PIN,ROLL 1/16X3/8 STL Z/P	1
21	889040-001	PIN,ROLL 5/64X5/8	1