

**INSTALLATION  
ADDENDUM FOR WAYNE  
G2000 SERIES ULTRA HIGH  
CAPACITY PUMPS,  
DISPENSERS AND  
SATELLITES**





## **READ THIS MANUAL BEFORE YOU BEGIN SERVICING THE DISPENSER**

Dispensers have both electricity and a hazardous, flammable and potentially explosive liquid. Failure to follow the Warning and Caution instructions in this manual, may result in hazardous condition. Follow all rules, codes and laws that apply to your area and installation.

### **SAFETY PRECAUTIONS – OPERATION**

Make sure that you know how to turn OFF power to the dispenser and submersible pumps in an emergency. Repair all leaks or defects immediately.

### **SAFETY PRECAUTIONS - INSTALLATION AND MAINTENANCE**

Always make sure ALL power to the dispenser is turned OFF before you open the dispenser cabinet for maintenance. Physically lock, restrict access to, or tag the circuit breakers you turn off when servicing the dispenser. Be sure to trip (close) the emergency valve(s) under the dispenser **BEFORE** beginning maintenance.

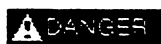
### **EQUIPMENT PRECAUTIONS**

Be sure to bleed all air from product lines of remote dispensers and prime suction pumps before dispensing product. Always use the approved method for lifting the dispenser. Never lift by the nozzle, sheet metal, valance, etc.

### **HOW TO CONTACT WAYNE**

Technical assistance is available at Wayne Technical Support (1-800-926-3737).

### **INDICATORS AND NOTATIONS**



Danger indicates a hazard or unsafe practice which, if not avoided, will result in severe injury or possibly death.



Warning indicates a hazard or unsafe practice, which, if not avoided, may result in severe injury or possibly death.

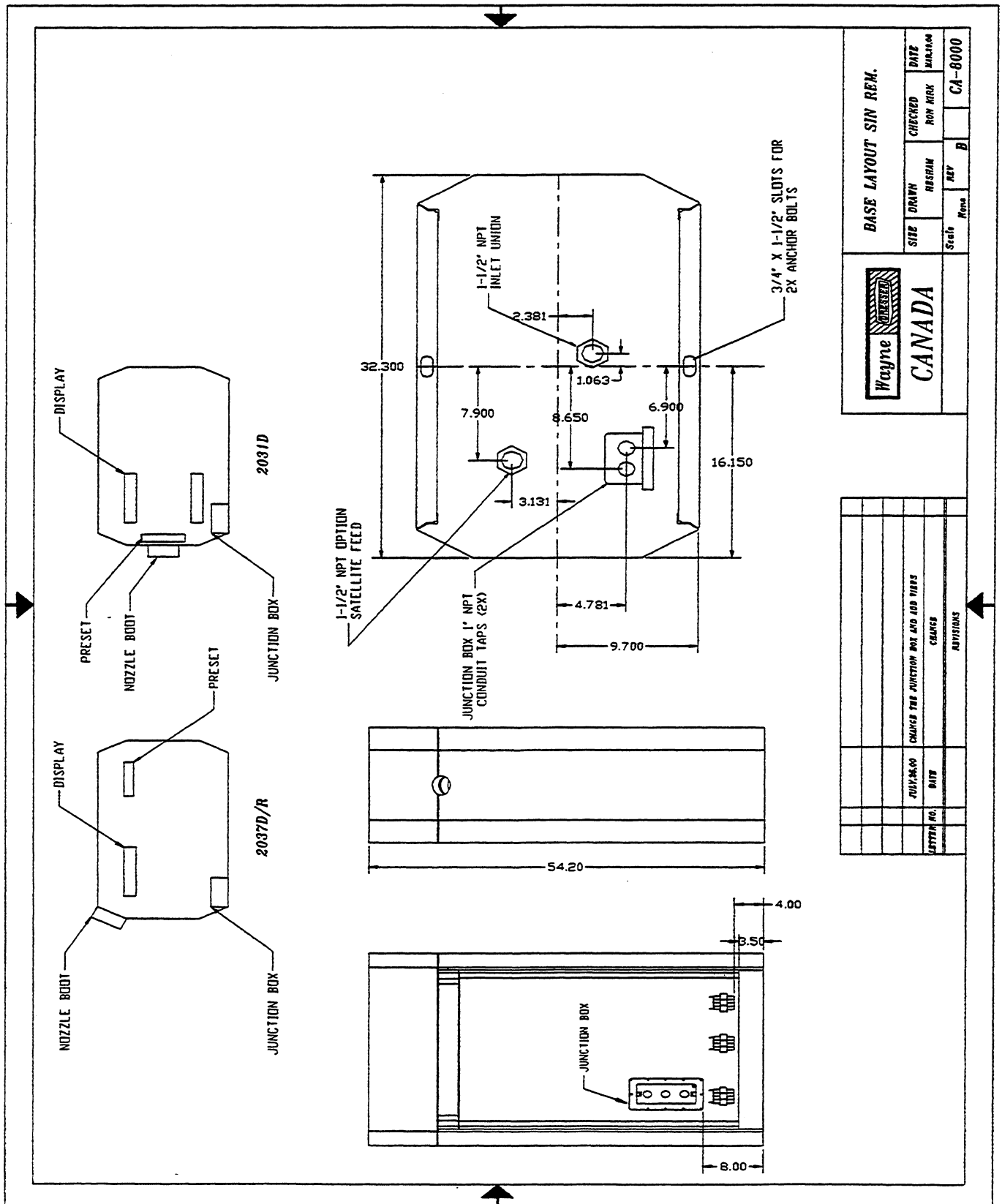


Caution indicates a hazard or unsafe practice which, if not avoided, may result in minor injury.

**Note:** Important information to consider, otherwise, improper installation, and/or damage to the components may occur.

## INDEX

|   |           |
|---|-----------|
| <b>FIGURE 1 G2031D AND G2037D/R BASE LAYOUT .....</b>                           | <b>1</b>  |
| <b>FIGURE 2 G2031P AND G2037P/R BASE LAYOUT .....</b>                           | <b>2</b>  |
| <b>FIGURE 3 G2031D AND G2037D BASE LAYOUT .....</b>                             | <b>3</b>  |
| <b>FIGURE 4 G2037P BASE LAYOUT LANE ORIENTED .....</b>                          | <b>4</b>  |
| <b>FIGURE 5 G2031P BASE LAYOUT ISLAND ORIENTED .....</b>                        | <b>5</b>  |
| <b>FIGURE 6 G2037D/LR BASE LAYOUT .....</b>                                     | <b>6</b>  |
| <b>FIGURE 7 G2038D/L BASE LAYOUT DUAL SATELLITE .....</b>                       | <b>7</b>  |
| <b>FIGURE 8 G2031D, G2037D/R, G2032D AND G2037D WIRING .....</b>                | <b>8</b>  |
| <b>FIGURE 9 G2031P, G2037P/R, G2032P AND G2037P WIRING .....</b>                | <b>9</b>  |
| <b>FIGURE 10 G2033D WIRING .....</b>  | <b>10</b> |
| <b>FIGURE 11 G2033P WIRING .....</b>  | <b>11</b> |
| <b>FIGURE 12 G2037D/LR AND G2038D/L WIRING .....</b>                            | <b>12</b> |
| <br>  |           |
| <b>APPENDIX A SATELLITE INTERCONNECTION DIAGRAMS .....</b>                      | <b>13</b> |
| <br>  |           |
| <b>FIGURE A-1 NON-SIMULTANEOUS DELIVERY .....</b>                               | <b>14</b> |
| <b>FIGURE A-2 SIMULTANEOUS DELIVERY .....</b>                                   | <b>15</b> |
| <br>  |           |
| <b>APPENDIX B PULSED OUTPUT BOARD .....</b>                                     | <b>16</b> |
| <br>  |           |
| <b>FIGURE B-1 PASSIVE PUSLER CONNECTION .....</b>                               | <b>17</b> |
| <b>FIGURE B-2 ACTIVE PUSLER CONNECTIONS .....</b>                               | <b>18</b> |
| <b>FIGURE B-3 GASBOY CONNECTION .....</b>                                       | <b>19</b> |
| <b>FIGURE B-4 COMPUTROL CONNECTION .....</b>                                    | <b>20</b> |
| <b>FIGURE B-5 PULSED OUTPUT BOARD DIP SWITCH SETTINGS AND CONNECTIONS .....</b> | <b>21</b> |

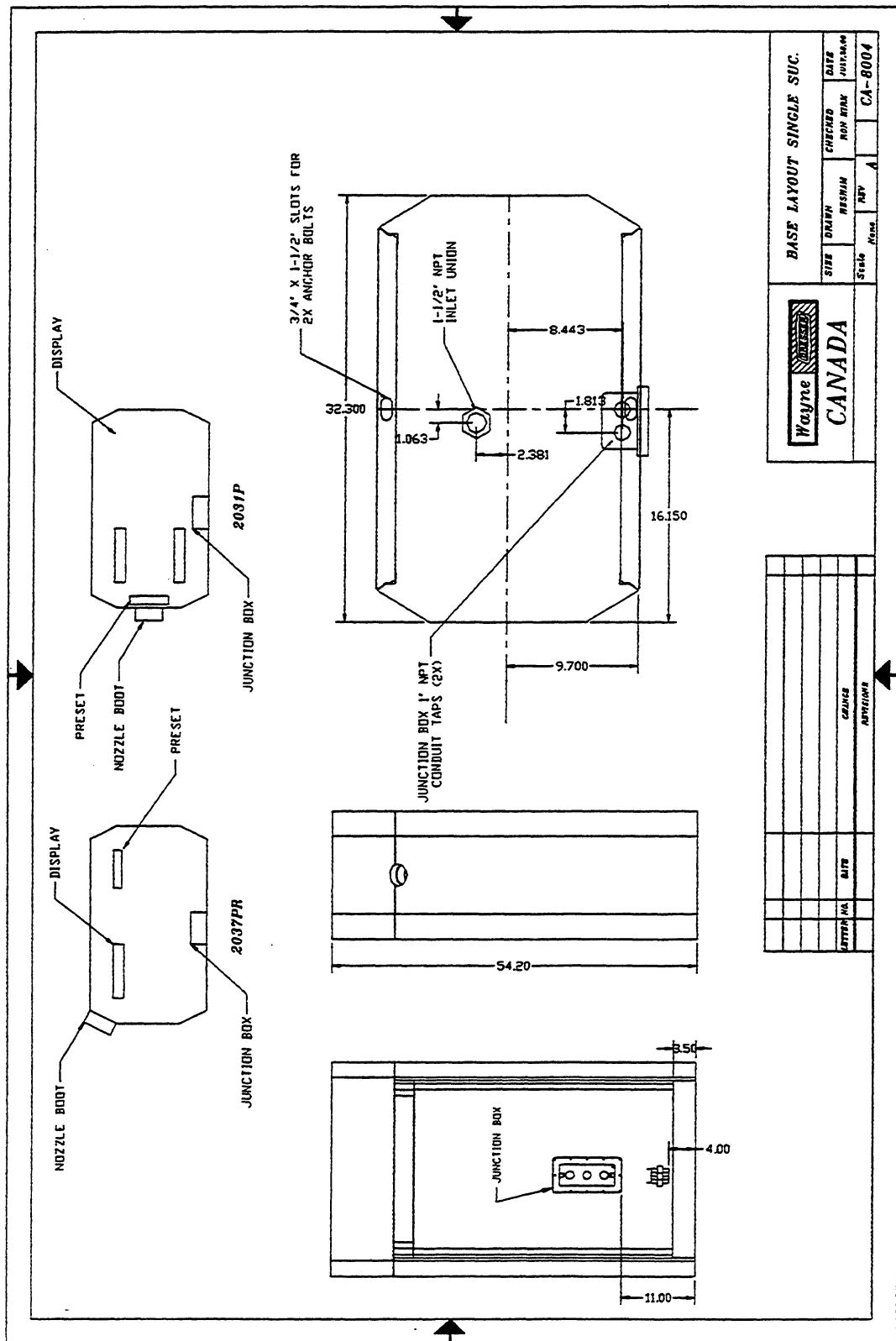


BASE LAYOUT SIN REM.

|       |        |      |        |          |        |
|-------|--------|------|--------|----------|--------|
| Wayne | CANADA | SIZE | DRAWN  | CHECKED  | DATE   |
|       |        |      | RESMAN | RON HIRK | MAR/04 |
| Scale | Rev    | REV  | B      | CA-8000  |        |

|            |             |                                      |           |
|------------|-------------|--------------------------------------|-----------|
| LETTER NO. | DATE        | CHANGE                               | REVISIONS |
|            | JULY 28, 00 | CHANGE THE JUNCTION BOX AND ADD TAPS |           |

**Figure 1 G2031D and G2037D/R Base Layout**

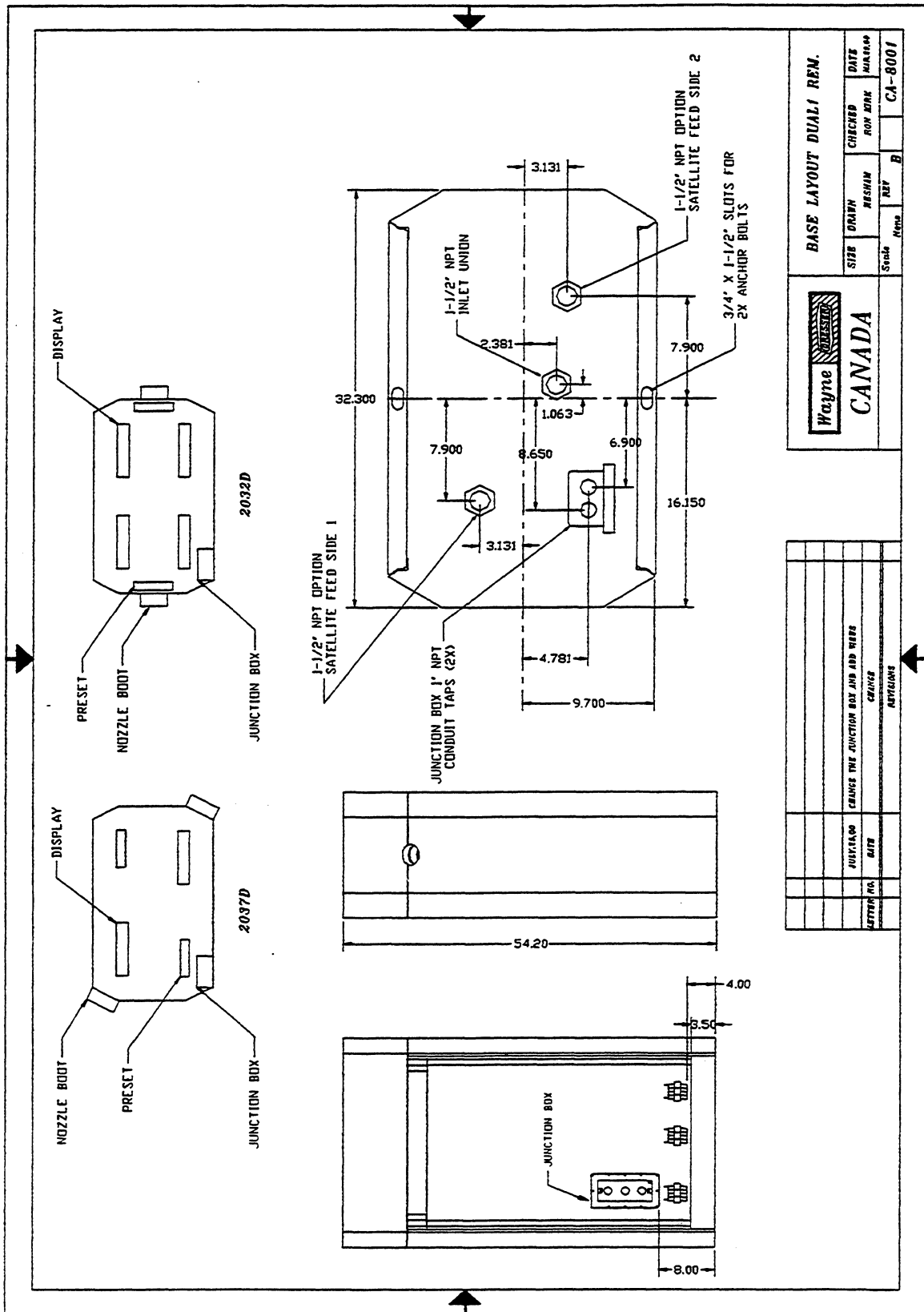


WORLDWIDE CANADA

| SIZE  | DRAWN  | CHECKED  | DATE     |
|-------|--------|----------|----------|
|       | RESHIN | BOH NTAJ | JULIANAM |
| Scale | REV    | REV      | CA-8004  |

| LETTER | NO. | DATE | CRANGE | REVISION |
|--------|-----|------|--------|----------|
|        |     |      |        |          |
|        |     |      |        |          |
|        |     |      |        |          |
|        |     |      |        |          |

**Figure 2 G2031P and G2037P/R Base Layout**

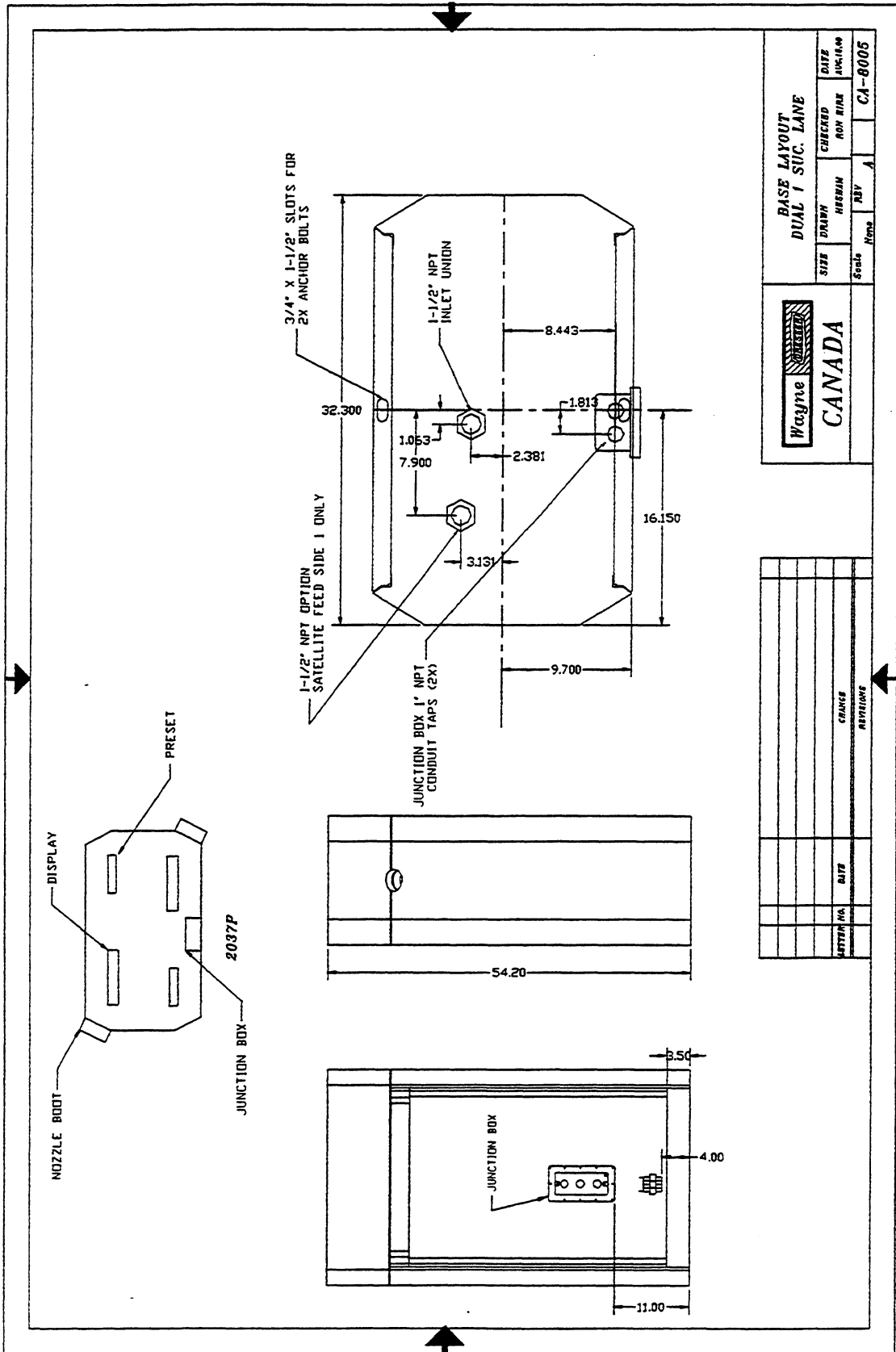


**Wayne**  
**CANADA**

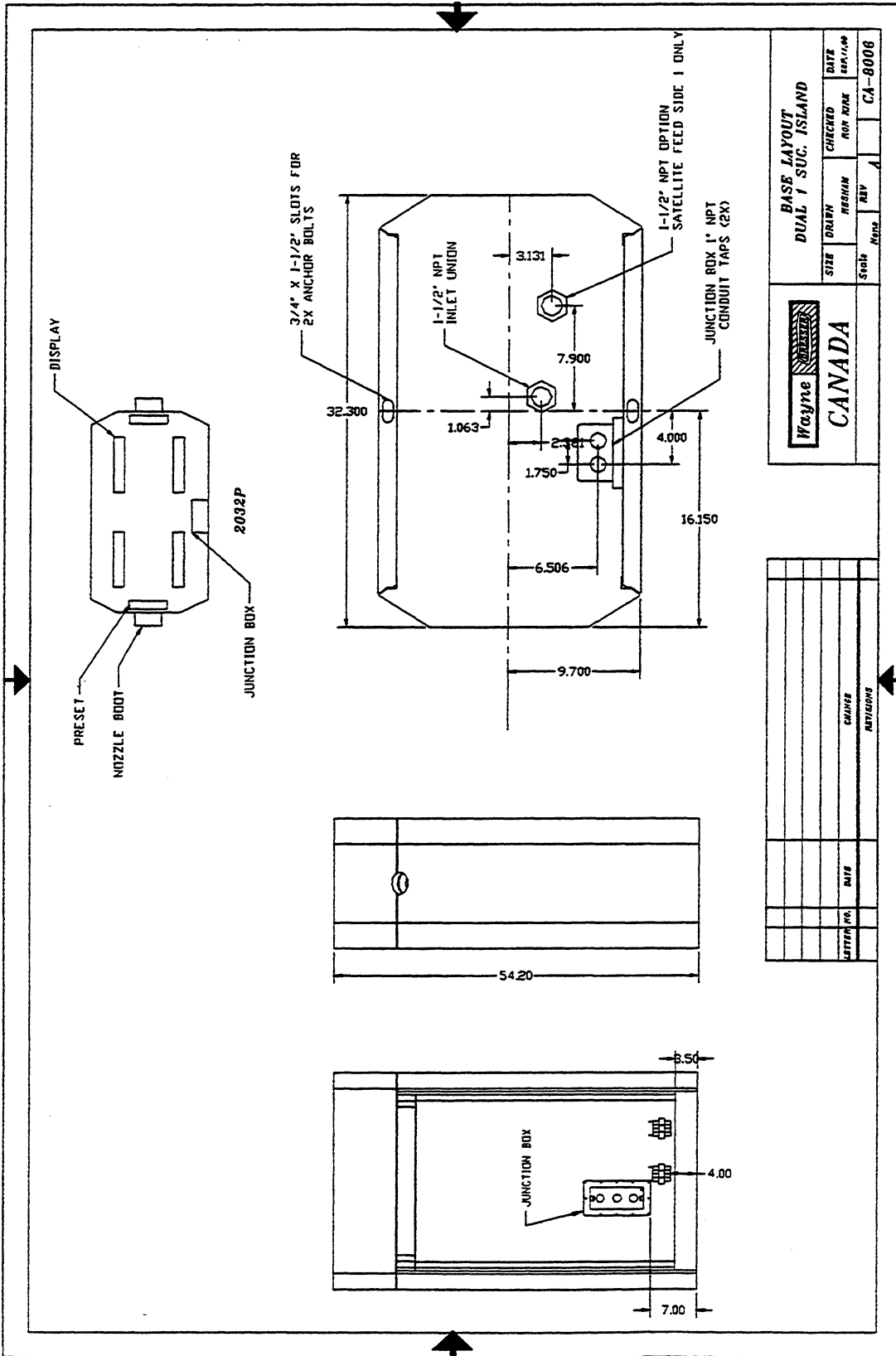
BASE LAYOUT DUAL1 REM.

|       |          |          |         |
|-------|----------|----------|---------|
| SIZE  | DRAWN    | CHECKED  | DATE    |
| Scale | REVISION | ROW MARK | MINOR** |
| Rev#  | REV      | B        | CA-8001 |

|           |                                      |
|-----------|--------------------------------------|
| JUSTIFIED | CHANGE THE JUNCTION BOX AND ADD WELD |
| DATE      | CHANGE                               |
| LETTERING | REVISE                               |



**Figure 4 G2037P Base Layout Lane Oriented**

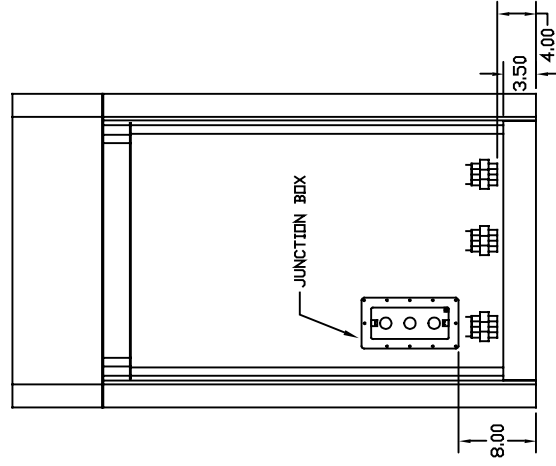
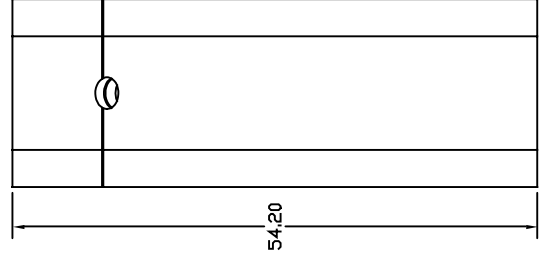
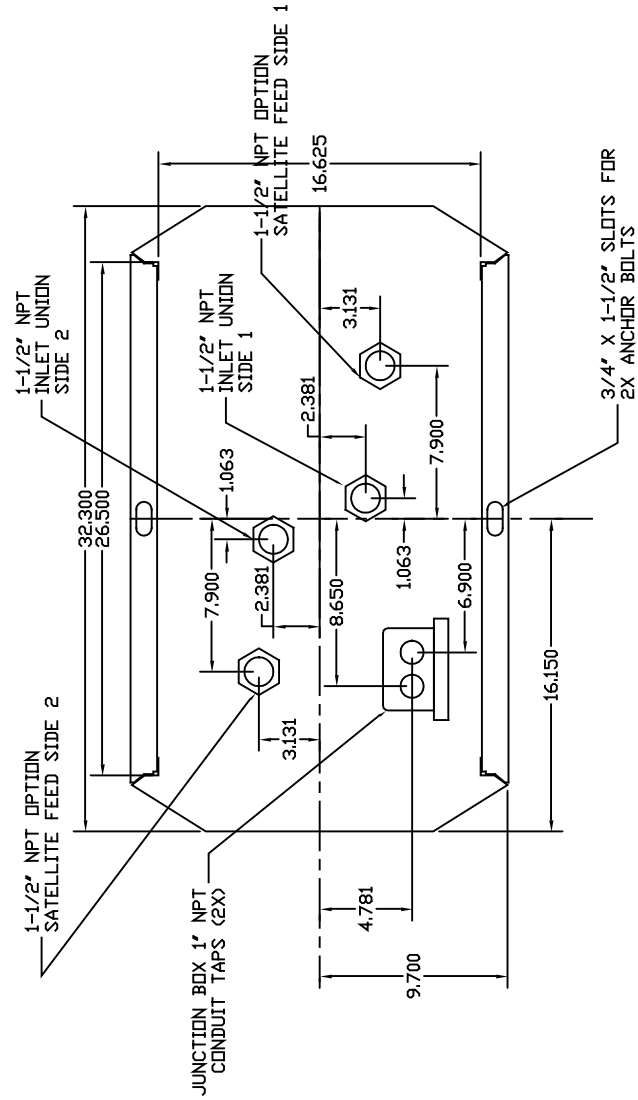
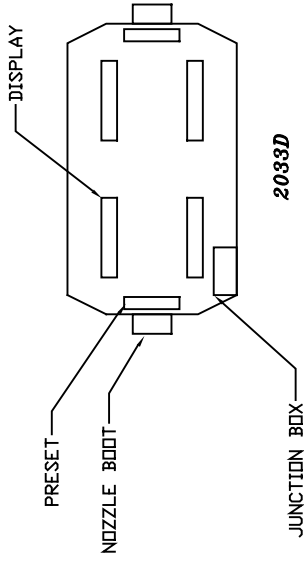


|             |       |                    |      |
|-------------|-------|--------------------|------|
| Wrayne      |       | CANADA             |      |
| SIZE        | DRAWN | CHECKED            | DATE |
| REV         | DATE  | REV                | DATE |
| 1           |       | 1                  |      |
| BASE LAYOUT |       | DUAL 1 SUC. ISLAND |      |
| CA-8008     |       |                    |      |

|            |      |        |          |
|------------|------|--------|----------|
| LETTER NO. | DATE | CHANGE | ARTISONS |
|            |      |        |          |
|            |      |        |          |
|            |      |        |          |
|            |      |        |          |

**Figure 5 G2031P Base Layout Island Oriented**

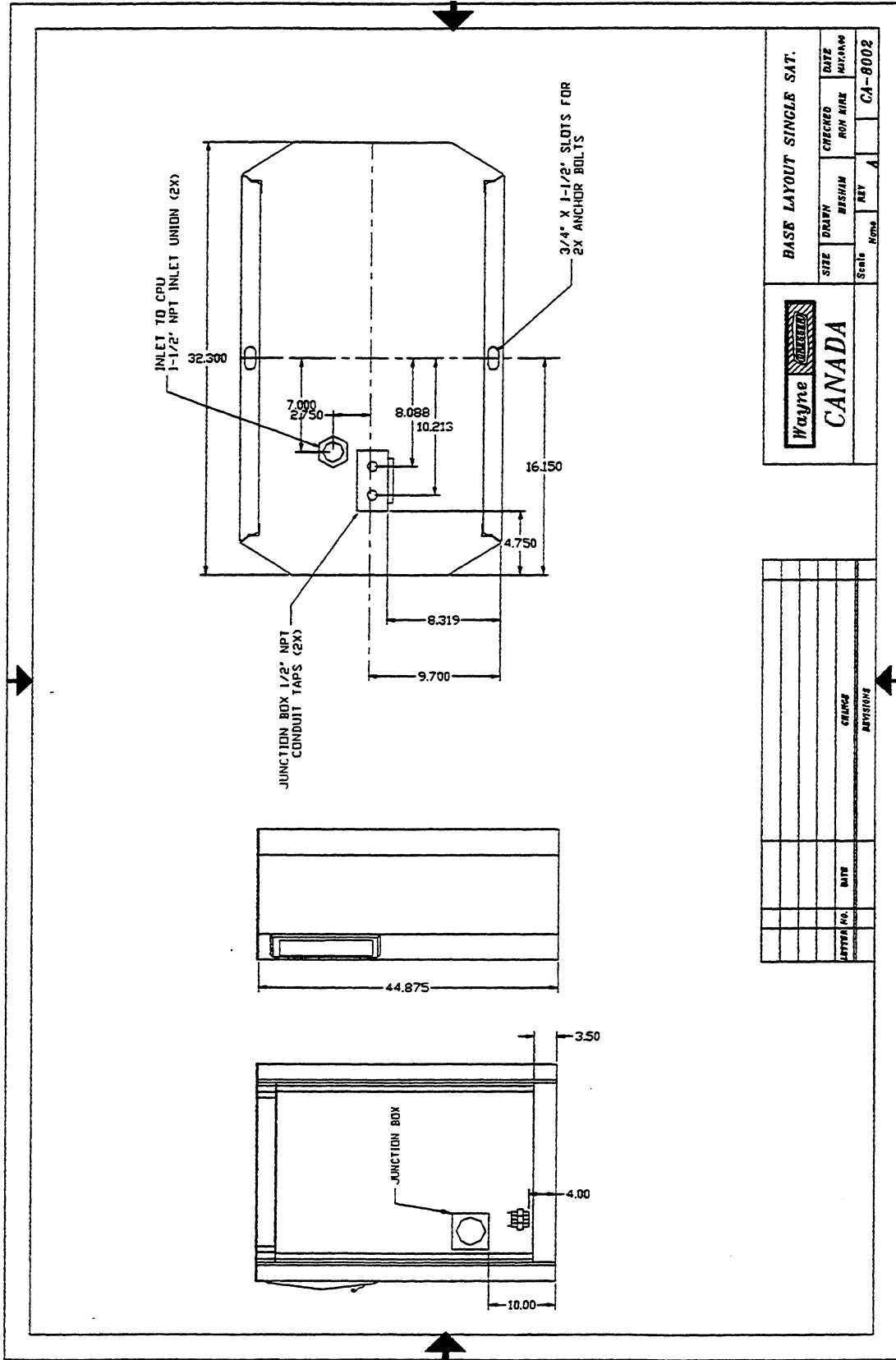




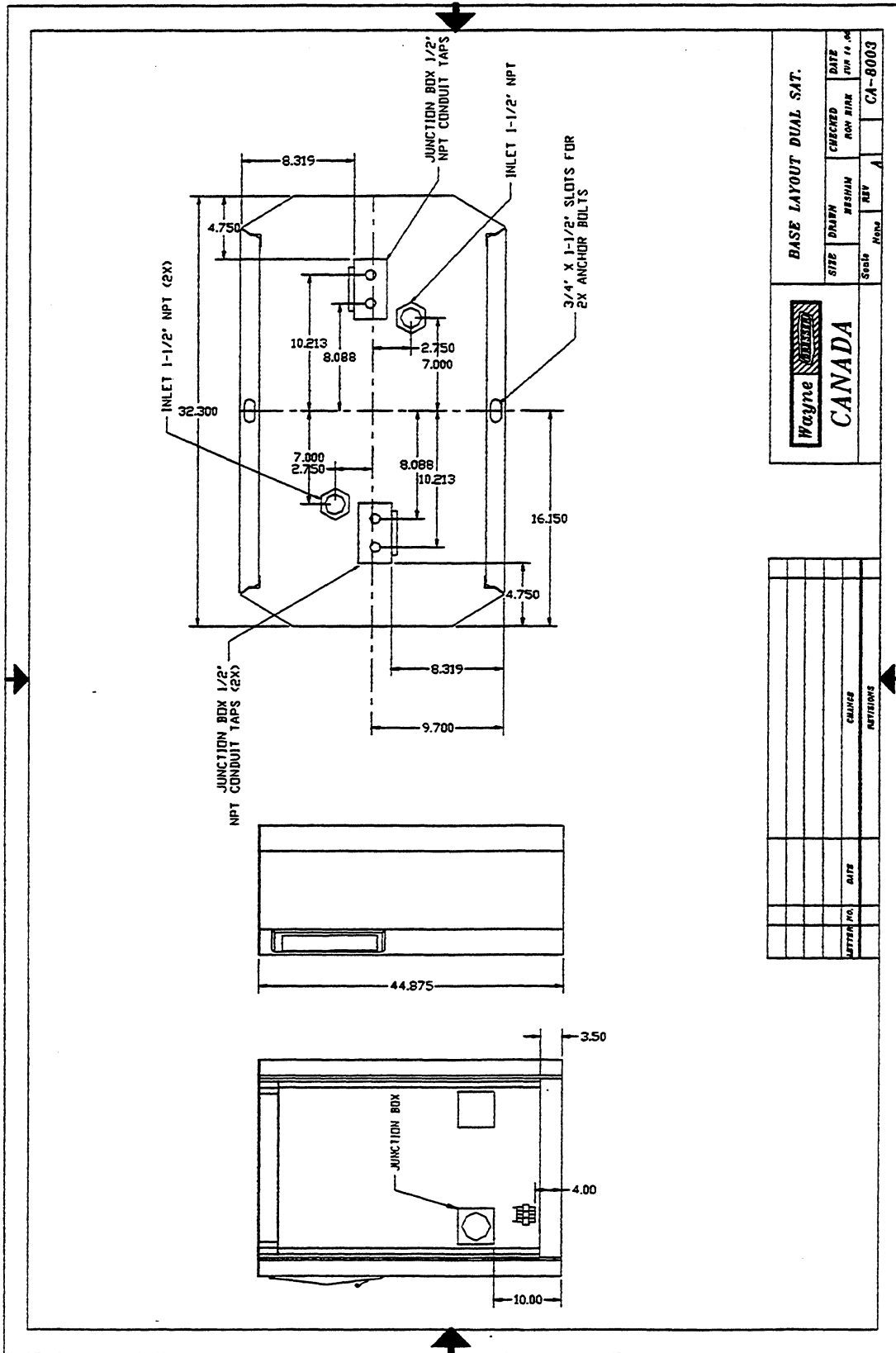
| LETTER NO. | DATE        | CHANGE                                | REVISIONS |
|------------|-------------|---------------------------------------|-----------|
|            | JULY 26, 00 | CHANGE THE JUNCTION BOX AND ADD VENTS |           |
|            |             |                                       |           |
|            |             |                                       |           |

| BASE LAYOUT DUAL II REM. |       |         |            |         |
|--------------------------|-------|---------|------------|---------|
| SIZE                     | DRAWN | CHECKED | DATE       | BY      |
|                          |       |         | MAR 26, 00 | CA-8009 |
| Scale                    | None  | REV     | B          |         |





**Figure 6 G2037D/LR Base Layout**



BASE LAYOUT DUAL SAT.

|      |        |          |          |
|------|--------|----------|----------|
| SITE | DRAWN  | CHECKED  | DATE     |
| Seab | RESINA | NOV 1988 | 09/14/88 |
| REV  | REV    | REV      | REV      |
| A    | A      | A        | A        |

CA-6003

|      |        |           |
|------|--------|-----------|
| DATE | CHANGE | REVISIONS |
|      |        |           |
|      |        |           |
|      |        |           |
|      |        |           |
|      |        |           |
|      |        |           |
|      |        |           |

**Figure 7 G2038D/L Base Layout Dual Satellite**

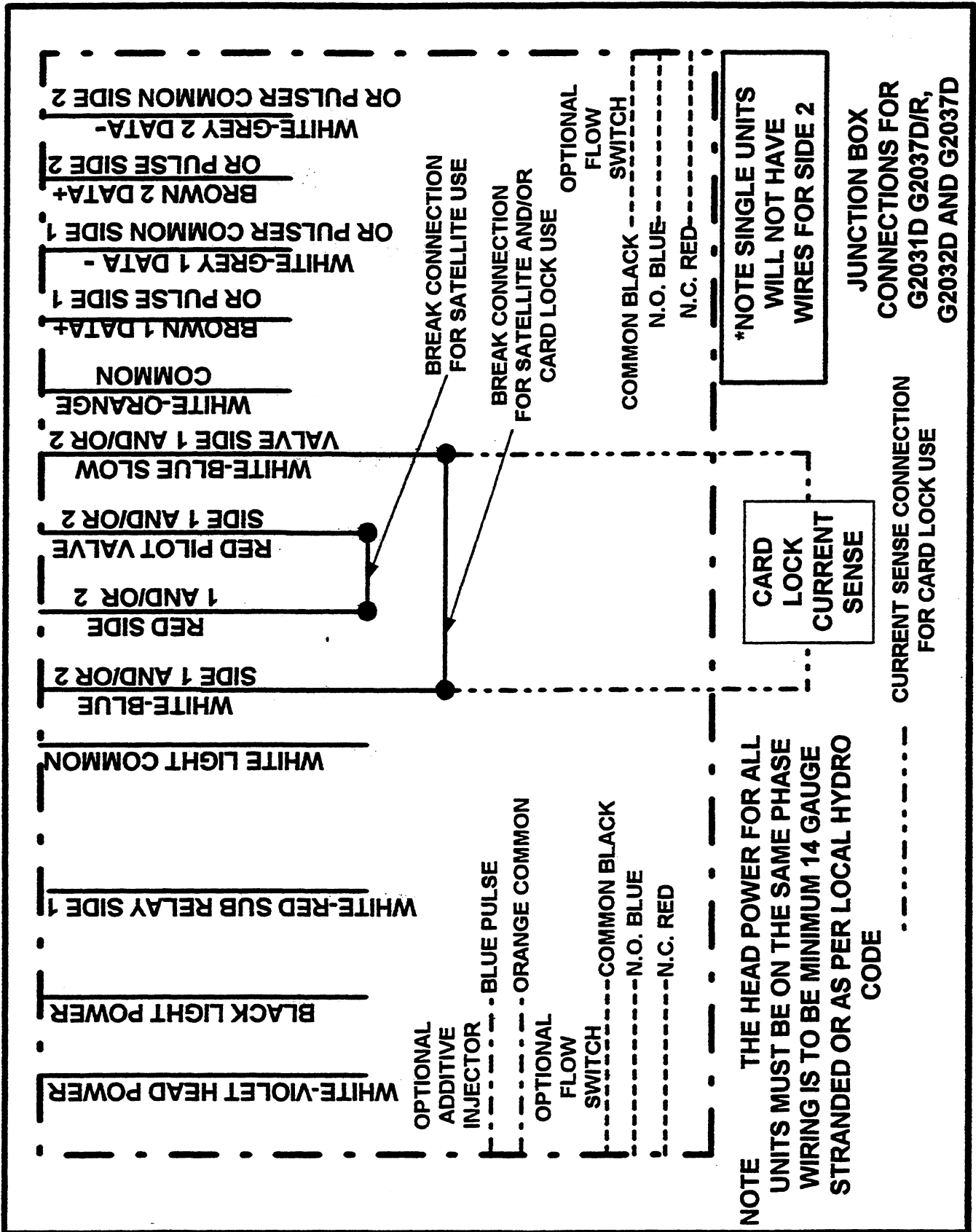


Figure 8 G2031D, G2037D/R, G2032D and G2037D Wiring

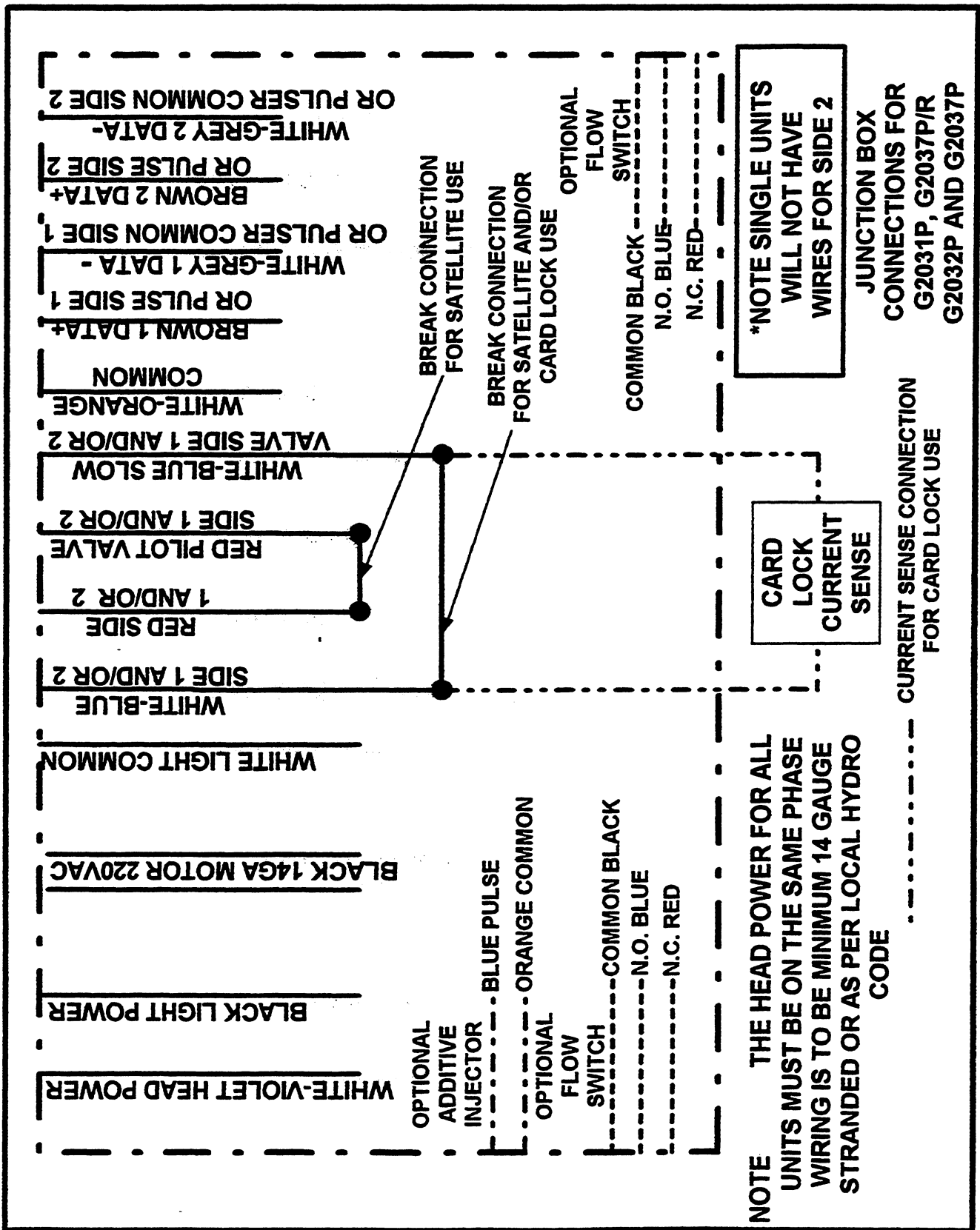


Figure 9 G2031P, G2037P/R, G2032P and G2037P Wiring

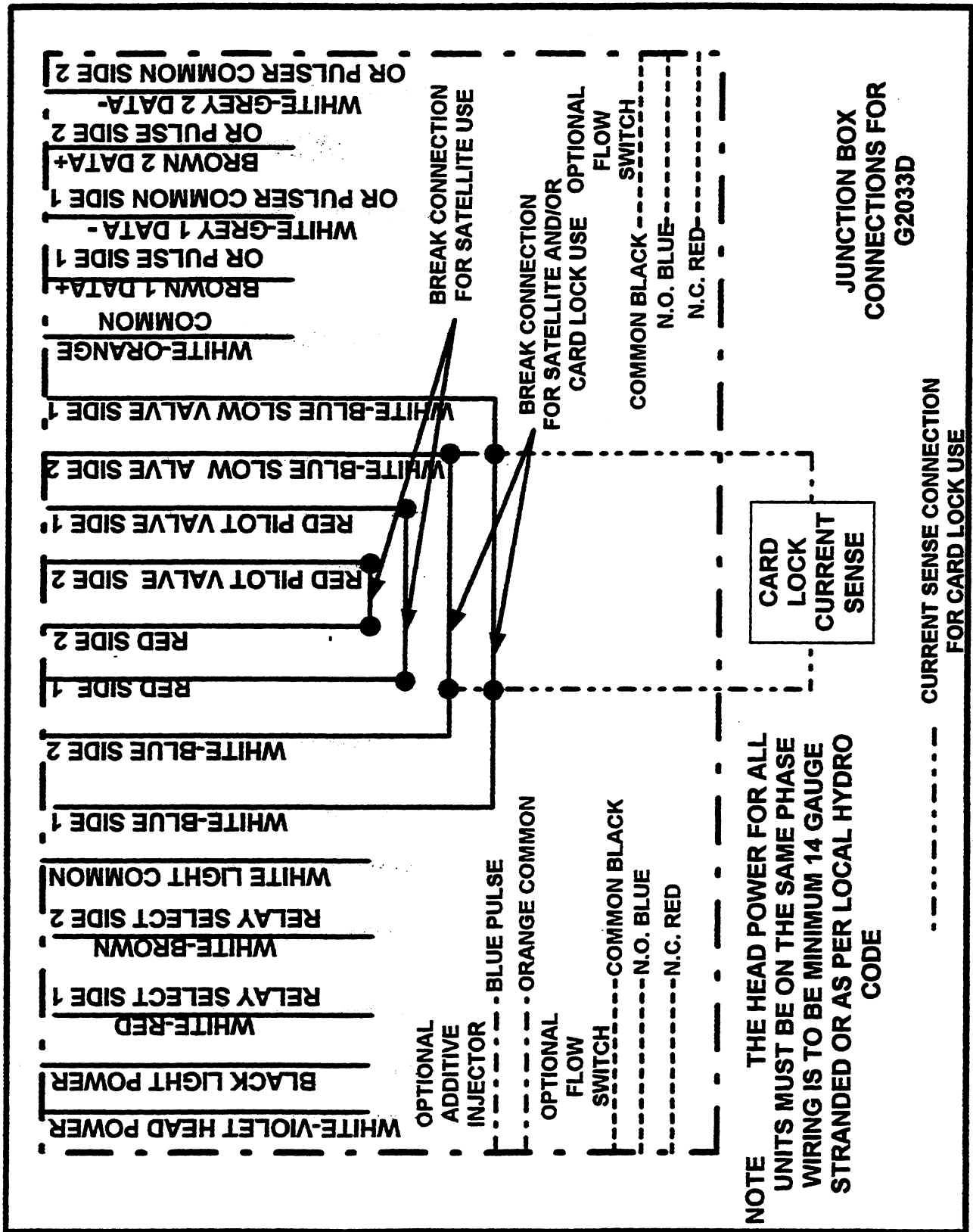
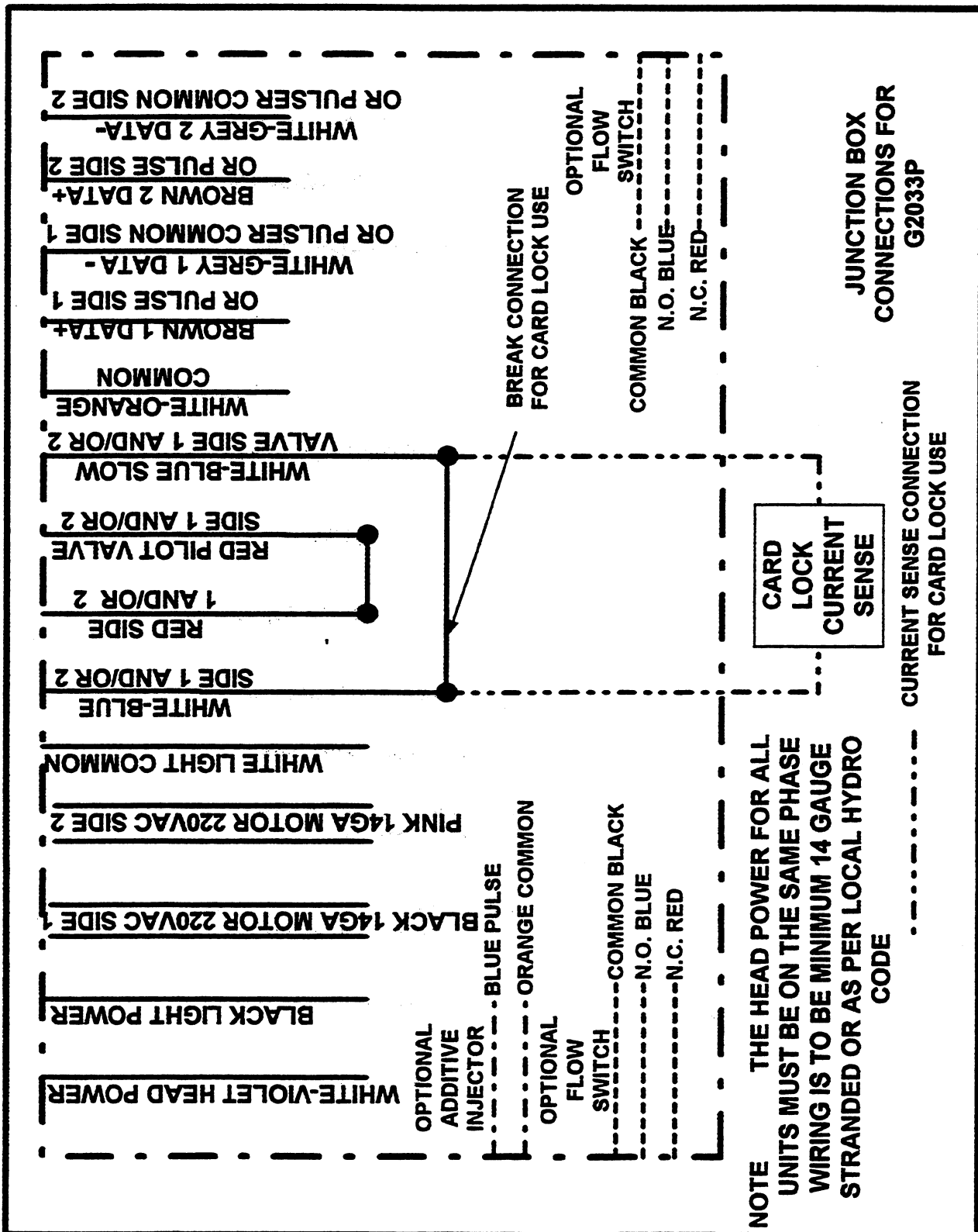
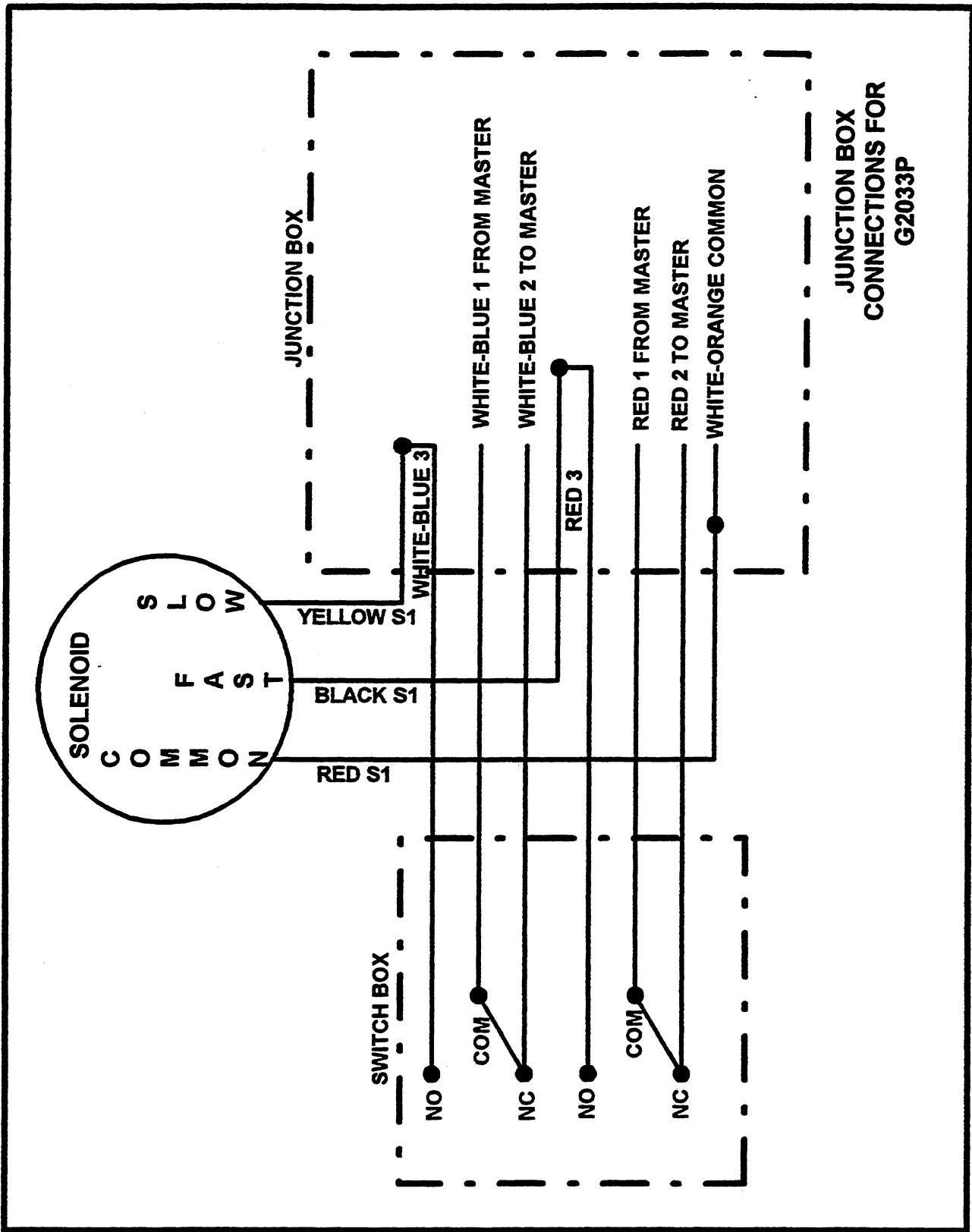


Figure 10 G2033D Wiring



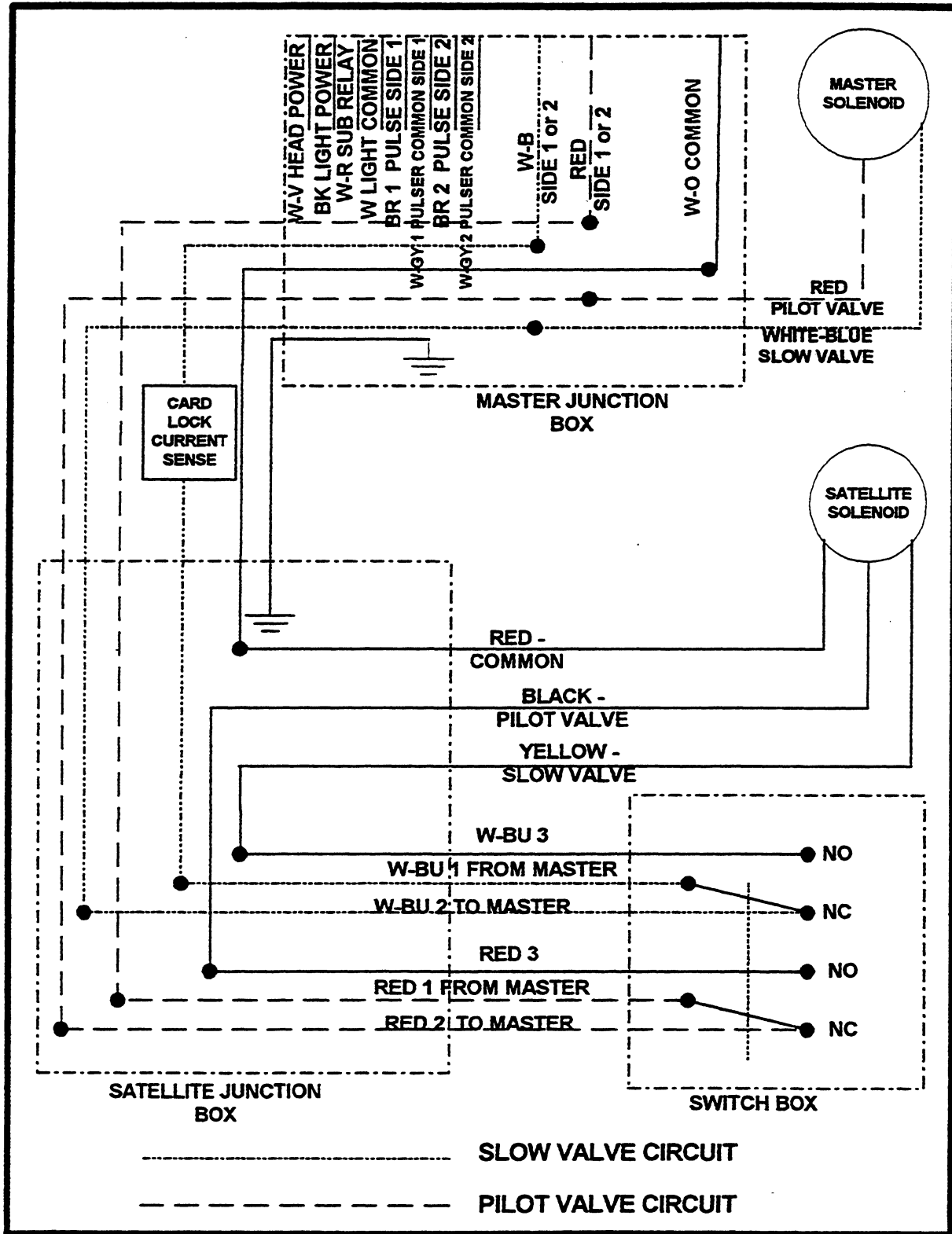
**Figure 11 G2033P Wiring**



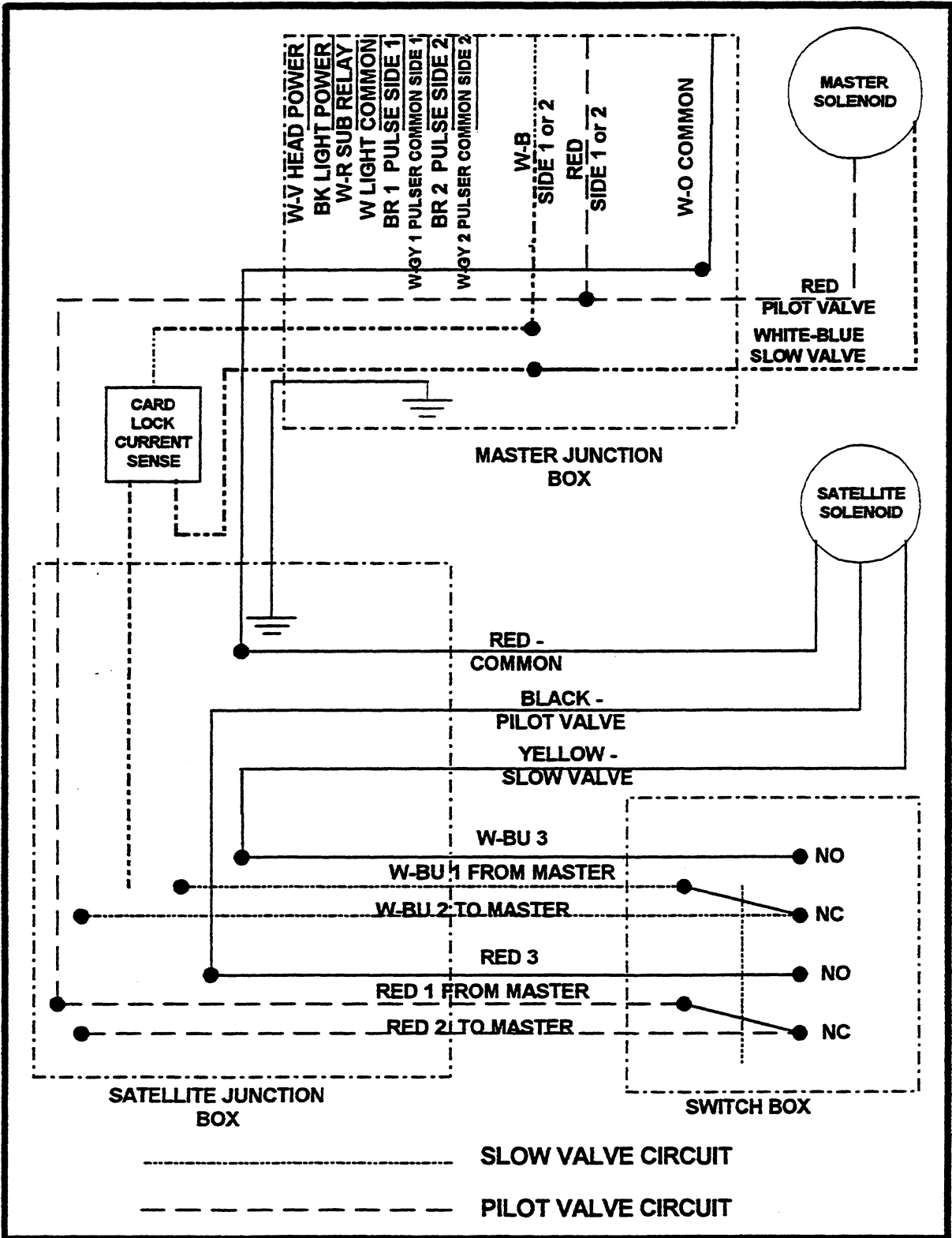
**Figure 12 G2037D/LR and G2038D/L Wiring**



**Appendix A Satellite Interconnection Diagrams**



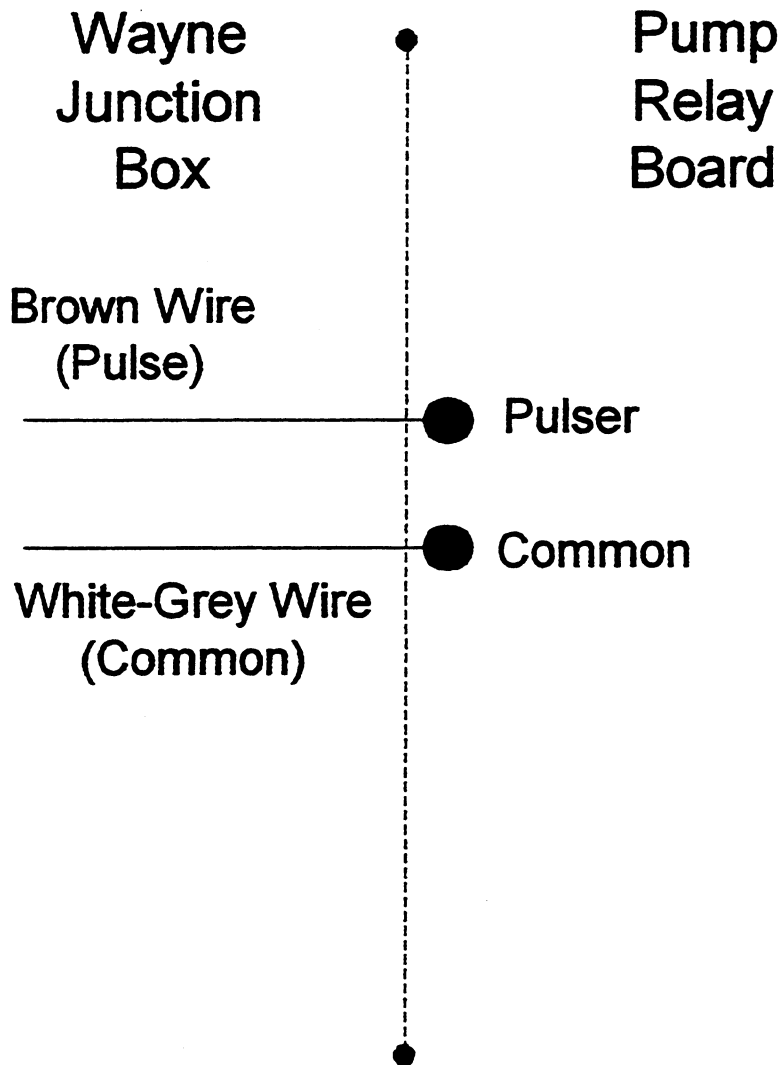
**Figure A-1 Non-Simultaneous Delivery**



**Figure A-2 Simultaneous Delivery**

**\*NOTE TO BE USED WHERE LOCAL REGULATIONS ALLOW**

**Appendix B Pulsed Output Board**

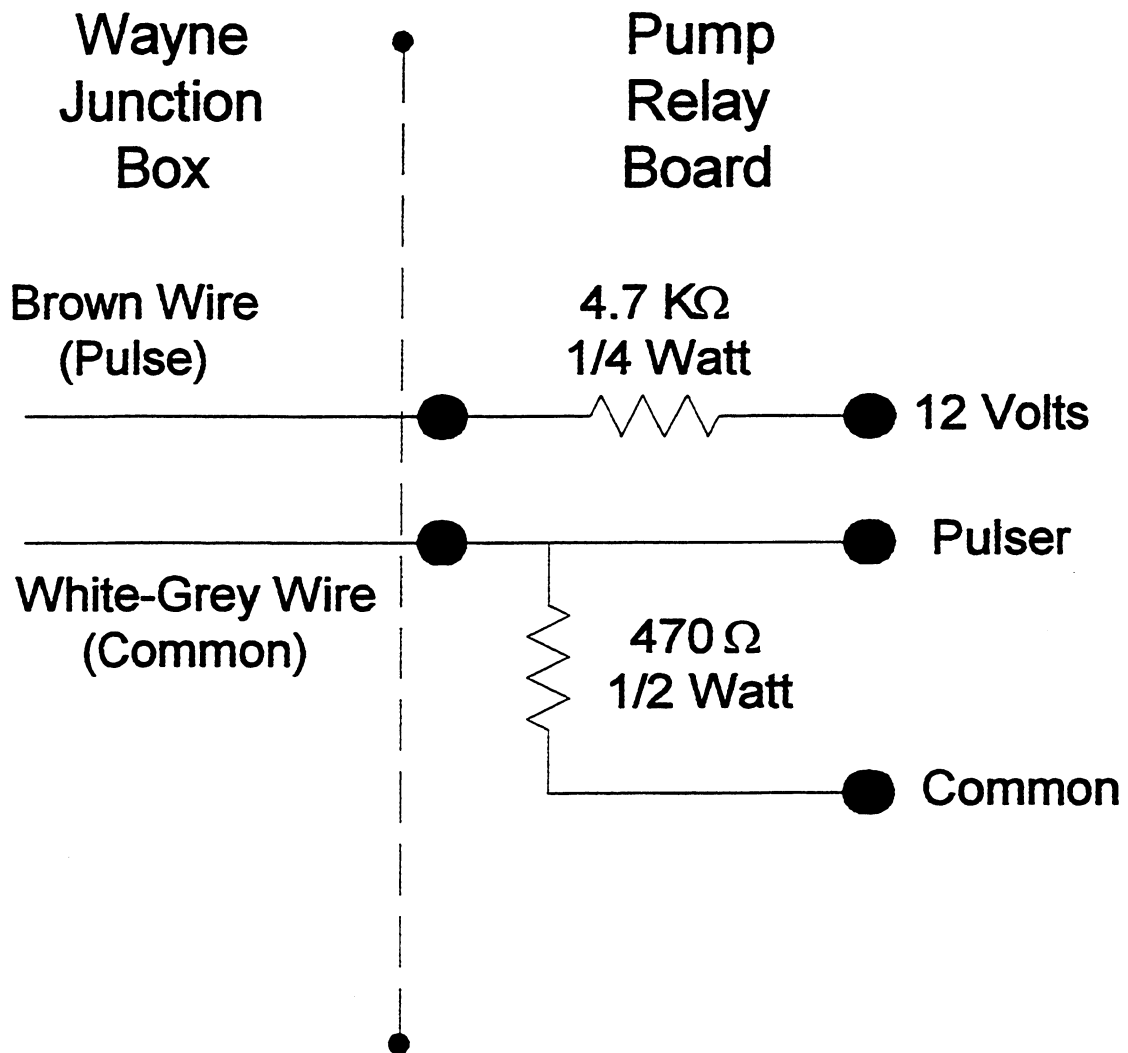


**NOTES:**

- USE WHITE-BLUE WIRES IN JUNCTION BOX FOR CURRENT SENSE AND CONTROL OF SOLENOIDS
- FOR INSTALLATIONS WITH SATELLITES THE CURRENT SENSE MUST BE ROUTED FIRST TO THE SATELLITE JUNCTION BOX AND THEN TO THE MASTER.
- FOR AUXILLARY CONTROL OF MOTORS OR SUBMERSIBLES USE THE WHITE-RED WIRE FOR SINGLES, DUAL I's AND SIDE 1 OF DUAL II's AND THE WHITE-BROWN WIRE FOR SIDE 2 OF DUAL II's
- SEE ATTACHED PAGE FOR PULSE RATE AND PULSE WIDTH DIP SWITCH SETTINGS

**Figure B-1 Passive Pulser Connection**

# ACTIVE PULSER CONNECTION

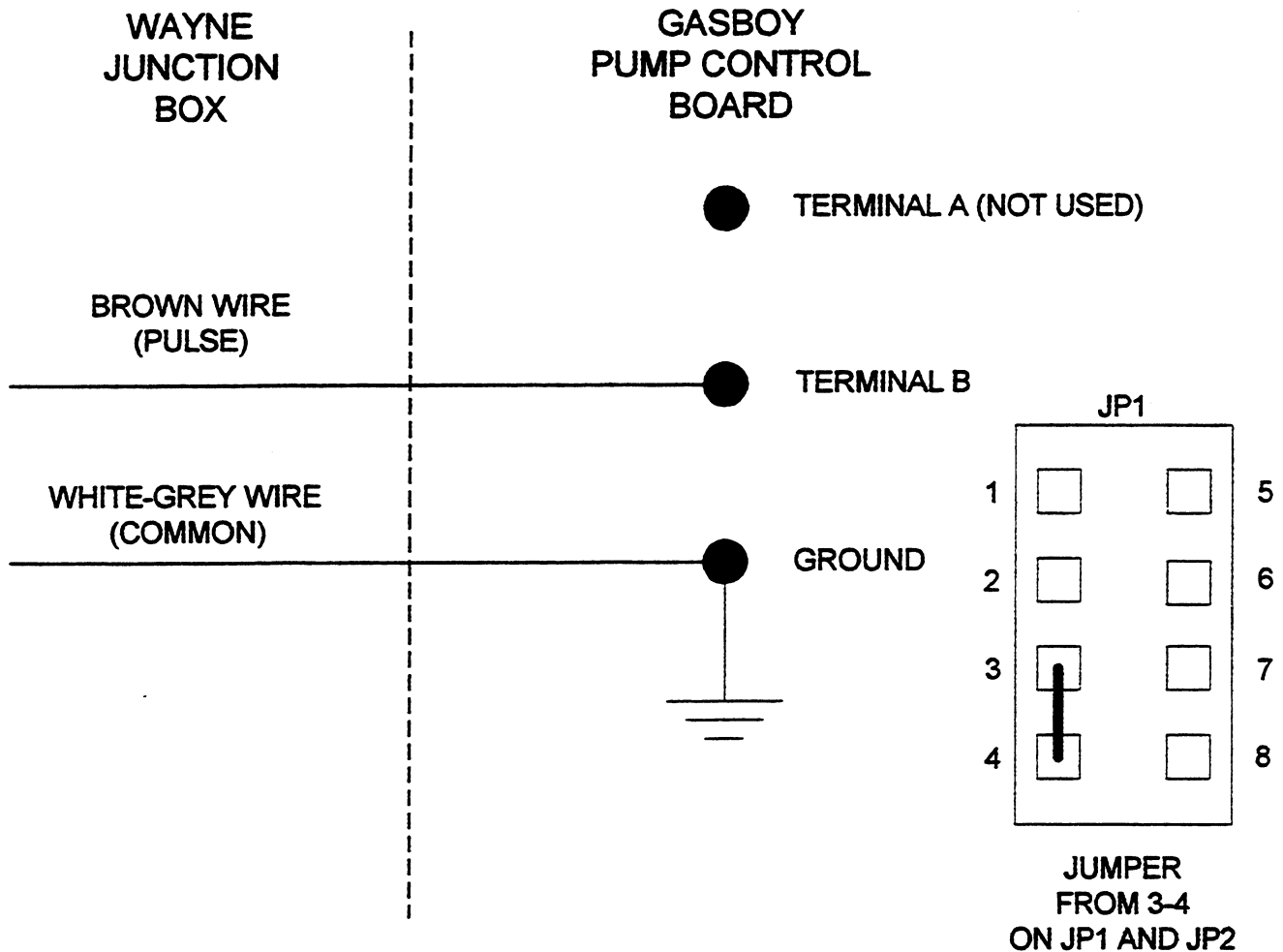


## NOTES:

- USE WHITE-BLUE WIRES IN JUNCTION BOX FOR CURRENT SENSE AND CONTROL OF SOLENOIDS
- FOR INSTALLATIONS WITH SATELLITES THE CURRENT SENSE MUST BE ROUTED FIRST TO THE SATELLITE JUNCTION BOX AND THEN TO THE MASTER.
- FOR AUXILLARY CONTROL OF MOTORS OR SUBMERSIBLES USE THE WHITE-RED WIRE FOR SINGLES, DUAL I's AND SIDE 1 OF DUAL II's AND THE WHITE-BROWN WIRE FOR SIDE 2 OF DUAL II's
- SEE ATTACHED PAGE FOR PULSE RATE AND PULSE WIDTH DIP SWITCH SETTINGS

**Figure B-2 Active Pusler Connections**

# GasBoy CONNECTION

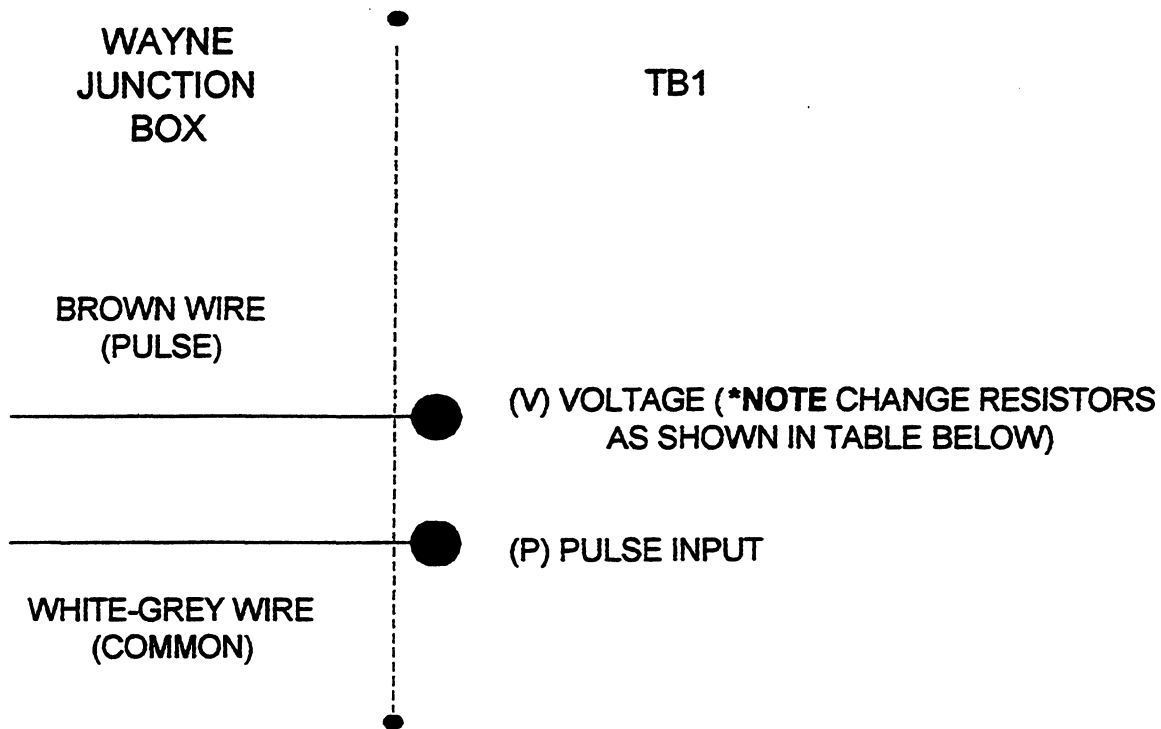


**NOTES:**

- USE WHITE-BLUE WIRES IN JUNCTION BOX FOR CURRENT SENSE AND CONTROL OF SOLENOIDS
- FOR INSTALLATIONS WITH SATELLITES THE CURRENT SENSE MUST BE ROUTED FIRST TO THE SATELLITE JUNCTION BOX AND THEN TO THE MASTER.
- FOR AUXILLARY CONTROL OF MOTORS OR SUBMERSIBLES USE THE WHITE-RED WIRE FOR SINGLES, DUAL I's AND SIDE 1 OF DUAL II's AND THE WHITE-BROWN WIRE FOR SIDE 2 OF DUAL II's
- SEE ATTACHED PAGE FOR PULSE RATE AND PULSE WIDTH DIP SWITCH SETTINGS

**Figure B-3 GasBoy Connection**

# COMPUTROL CONNECTION



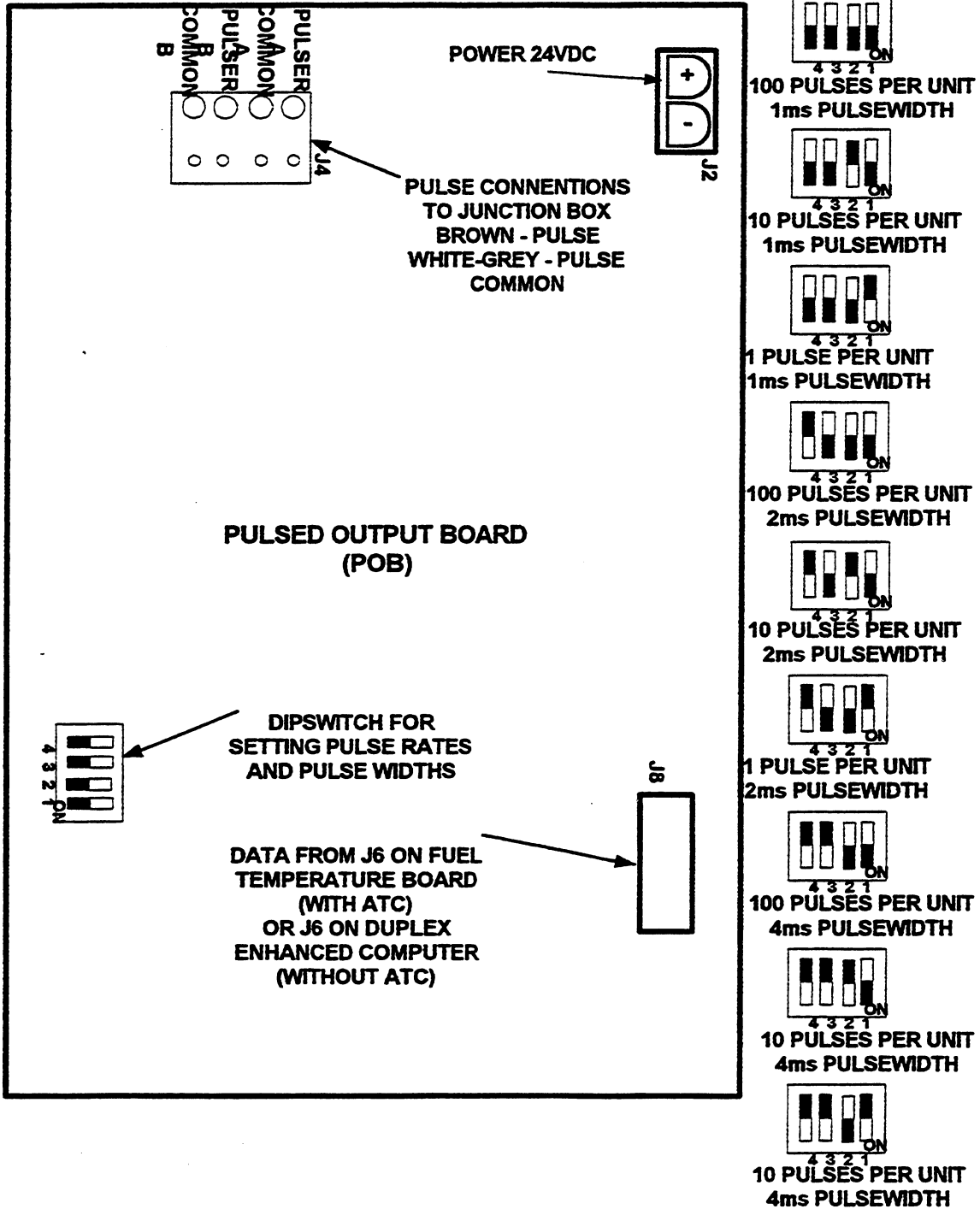
| PUMP 1 | PUMP 2 | PUMP 3 | PUMP 4 | CHANGE IF REQUIRED                                     |
|--------|--------|--------|--------|--|
| R28    | R21    | R14    | R7     | 1K OHM REMOVE FROM BOARD                               |
| R27    | R20    | R13    | R6     | 10K OHM CHANGE TO 470 OHM                              |
| R26    | R19    | R12    | R5     | 10K OHM CHANGE TO 470 OHM                              |
| R25    | R18    | R11    | R4     | 2AMP PICO FUSE LEAVE AS IS<br>(47 OHM ON OLDER BOARDS) |

**NOTES:**

- USE WHITE-BLUE WIRES IN JUNCTION BOX FOR CURRENT SENSE AND CONTROL OF SOLENOIDS
  - FOR INSTALLATIONS WITH SATELLITES THE CURRENT SENSE MUST BE ROUTED FIRST TO THE SATELLITE JUNCTION BOX AND THEN TO THE MASTER.
  - FOR AUXILLARY CONTROL OF MOTORS OR SUBMERSIBLES USE THE WHITE-RED WIRE FOR SINGLES, DUAL I's AND SIDE 1 OF DUAL II's AND THE WHITE-BROWN WIRE FOR SIDE 2 OF DUAL II's
- SEE ATTACHED PAGE FOR PULSE RATE AND PULSE WIDTH DIP SWITCH SETTINGS

**Figure B-4 Computrol Connection**





**Figure B-5 Pulsed Output Board DIP Switch Settings and Connections**

## **WARRANTY AND LIMITATION OF REMEDY AND LIABILITY**

Seller warrants that new products and parts of its own design and manufacture when shipped, will be of good quality and will be free from defects in material and workmanship and will conform to applicable specifications. Work, when performed by Seller, will meet applicable work requirements. No warranty is made with respect to used or rebuilt equipment and with respect to products not manufactured by Seller. Seller's only obligation shall be to assign to Buyer, at the time of sale, whatever warranty Seller has received from the manufacturer. Items such as but not limited to lamps, electric motors, hoses, nozzles, hose swivels and safety impact valves are included in the category referred to in the previous sentence. Seller's recommendations with respect to the operation of Seller's equipment are advisory only and are not warranted. All claims under this warranty must be made in writing immediately upon discovery and, in any event, within twenty-four (24) months from date of start-up, if a product is involved, or from completion of the applicable work, if work is involved, or thirty (30) months from date of invoice (whichever shall occur first). (Provided however, that with respect to the Wayne Plus system, 2400 system, DL series dispensers, and card readers, all claims must be made in writing within twelve (12) months from date of start-up. With respect to receipts/totals printers, and any other printers or printing mechanisms, all claims must be made in writing within ninety (90) days from date of start-up. Wayne Vista dispenser external metal panels will be free from defects due to rust and/or corrosion for a period of forty-eight (48) months from date of dispenser start-up.) Defective and nonconforming items must be held for Seller's inspection and returned to the original f.o.b. point upon request. Seller's warranty on service parts, whether new or reconditioned, is ninety (90) days from the date of installation, or twelve (12) months from date of invoice, whichever first occurs. **THE FOREGOING IS EXPRESSLY IN LIEU OF ALL OTHER WARRANTIES WHATSOEVER, EXPRESSED, IMPLIED AND STATUTORY, INCLUDING WITHOUT LIMITATIONS, THE IMPLIED WARRANTIES OF MERCHANTABILITY AND FITNESS.**

Upon Buyer's submission of a claim as provided above and its substantiation, Seller shall, at its option either (I) repair or replace its product or work at the original f.o.b. point or location of purchase products and/or parts or (II) refund an equitable portion of the purchase price.

**THE FOREGOING IS SELLER'S ONLY OBLIGATION AND BUYER'S EXCLUSIVE REMEDY FOR BREACH OF WARRANTY AND, EXCEPT FOR GROSS NEGLIGENCE OR WILLFUL MISCONDUCT, THE FOREGOING IS BUYER'S EXCLUSIVE REMEDY AGAINST SELLER FOR ALL CLAIMS ARISING HEREUNDER OR RELATING HERETO WHETHER SUCH CLAIMS ARE BASED ON BREACH OF CONTRACT, TORT (INCLUDING NEGLIGENCE AND STRICT LIABILITY) OR OTHER THEORIES. BUYER'S FAILURE TO SUBMIT A CLAIM AS PROVIDED ABOVE SHALL SPECIFICALLY WAIVE ALL CLAIMS FOR DAMAGES OR OTHER RELIEF, INCLUDING BUT NOT LIMITED TO CLAIMS BASED ON LATENT DEFECTS. IN NO EVENT SHALL BUYER BE ENTITLED TO INCIDENTAL OR CONSEQUENTIAL DAMAGES. ANY ACTION BY BUYER ARISING HEREUNDER OR RELATING HERETO, WHETHER BASED ON BREACH OF CONTRACT, TORT (INCLUDING NEGLIGENCE AND STRICT LIABILITY) OR OTHER THEORIES, MUST BE COMMENCED WITHIN ONE (1) YEAR AFTER THE CAUSE OF ACTION ACCRUES OR IT SHALL BE BARRED.**

**"NOTE: This equipment has been tested and found to comply with the limits for a Class A digital device, pursuant to Part 15 of the FCC Rules. These limits are designed to provide reasonable protection against harmful interference when the equipment is operated in a commercial environment. This equipment generates, uses, and can radiate radio frequency energy and, if not installed and used in accordance with the instruction manual, may cause harmful interference to radio communications. Operation of this equipment in a residential area is likely to cause harmful interference in which case the user will be required to correct the interference at his own expense."**

