

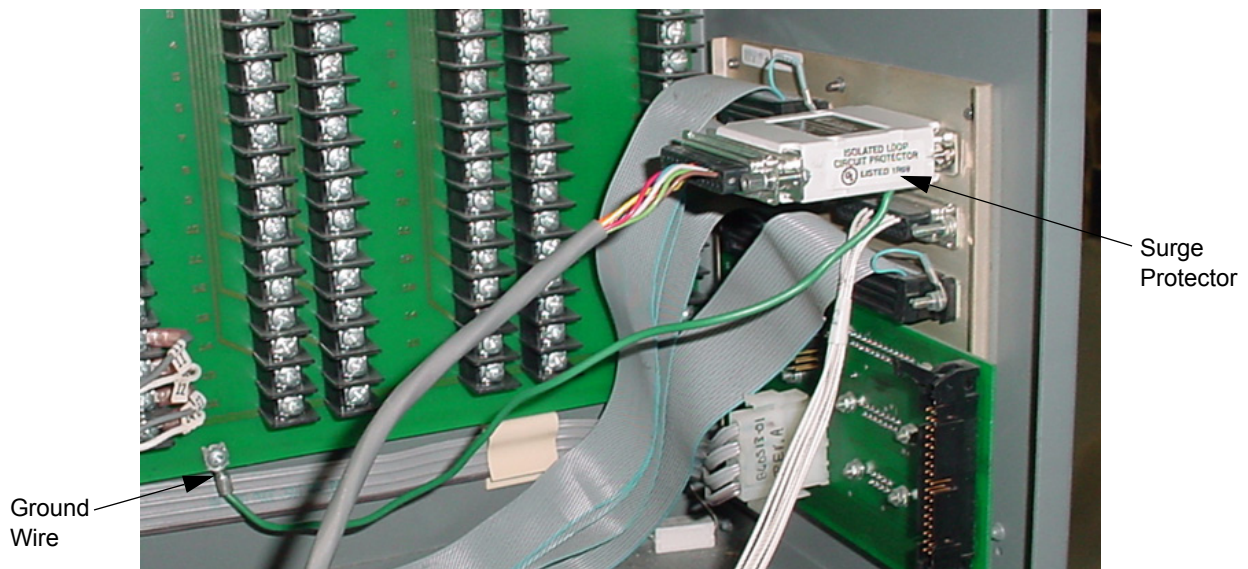
1 INSTALLATION - HyperPIB RS-232 Surge Protector, P/N 891126-001

The surge protector will be installed in-line with the HyperPIB on the inside of the site controller at the side connector panel.

Address questions concerning installation to Wayne Technical Support at 1-800-926-3737.

2 Installation Instructions

1. Power down site controller.
2. Disconnect the POS cable at J1 on the outside panel of the Site Controller.
3. Remove the two screws and remove the J1 connector which has the cable coming from the HyperPIB board (or the 2400/PIB board if HyperPIB is not yet installed). Save the screws.
4. Attach the RS-232 Surge Protector, p/n 891126-001, to the HyperPIB cable connector (existing cable or the new cable from the HyperPIB kit) using the hardware supplied with the surge protector and reuse screws from above. See photo below.
5. Attach the surge protector to the side panel in the J1 location using the screws provided.
6. Connect green ground wire from surge suppressor to the lower mounting screw on the backplane circuit board.
7. Reconnect the POS cable to J1 on the outside panel.
8. Power up Site Controller and test POS/dispenser operation.



RS-232 SURGE PROTECTOR INSTALLED



Wayne