



STP-DHI-SCI



STP-DHI-CBS

STP-DHI Dispenser Hook Isolation

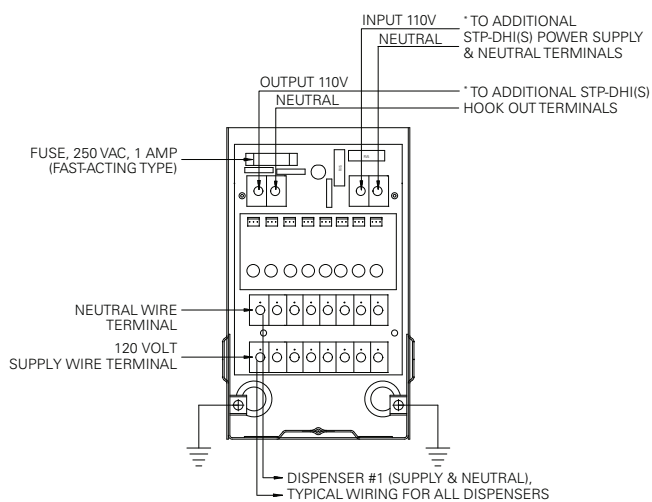
Model	Description
402312921	STP-DHI-SCI combo DHI with factory-wired STP-SCI
402313921	STP-DHI-CBS, combo DHI with factory-wired STP-CBS single-phase control box
5800300100	STP-DHI, isolates up to eight, 120 Volt dispenser handles

Notes:

1. DHI models are compatible with FE PETRO® submersible pump controllers and competitive pump controller makes accepting 120 Volt dispenser hook signal.
2. DHI models can be connected together for products with more than eight dispenser handle inputs.

DHI Repair Parts and Accessories

Model	Description
223243103	DHI fast-acting fuse, 250 VAC, 1 Amp
223885930	DHI circuit board, 120 Volt dispenser hook signal



*Wiring is polarity-sensitive when multiple units are connected together.

SINGLE-PHASE CONTROL BOX

The FE PETRO® standard single-phase control box latches line power to the submersible when the relay is energized by a dispenser signal. Compatible with FE PETRO® and competitive makes of single-phase, fixed speed submersible turbines up to 2 hp.

Model	Description
400818921	STP-CBS, single-phase control box, with switch and lockout, 120 Volt coil
402313921	STP-DHI-CBS, combo dispenser hook isolation with factory-wired STP-CBS

Notes:

1. CBS models are compatible for use on all single-phase FE PETRO® submersibles and competitive models.
2. One CBS required per submersible, relay rated for 30 Amps up to 2 hp.
3. Incorporates pump "ON" indicator light.
4. Relay rated for 220 Volts, 30 Amps and pumps up to 2 hp.

