

Use a Vent Drier to prevent condensation or absorption of water vapor by a material in a storage tank. All Vent Driers have a sight glass window with Indicating desiccant to tell you when the drier is exhausted.

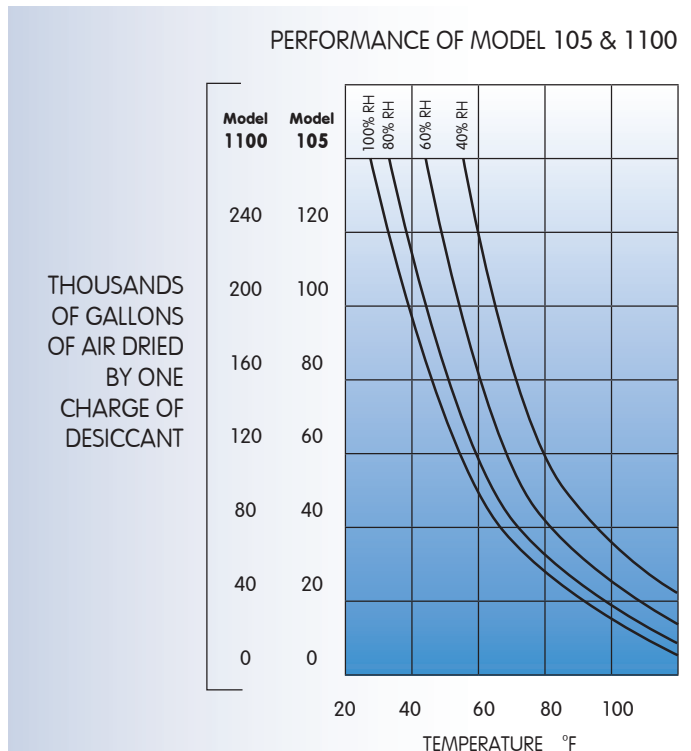
Applications

- Guards sensitive materials against moisture
- Protects tanks, pumps and pipelines from corrosion by condensed water vapor
- Prevents biological growth by keeping out water
- Prevents contamination of valuable liquids by corrosive sludge
- Dries air to -100° F dew point or 2 ppm by weight



Condensation or absorption of water vapor by a material in a storage vessel can be prevented by the installation of one of these drying columns in the vent piping. When the material in a storage vessel is removed, the moisture laden air replacing the material is completely dried by the desiccant column in the vent line. Breathing through the vent line occurs daily from changes in atmospheric pressure and temperature. These dryer units will prevent contamination from this source. These driers will protect storage vessels up to 400,000 gallons. The drying units will produce dry air (-100° F dew point) for flow rates up to 1200 gallons per minute (160 cfm). The moisture indicator eliminates guesswork; it tells you when the desiccant is exhausted. The glass window has a few ounces of indicating desiccant behind it.

The Indicating desiccant turns from blue to pink when the drier is exhausted. The drier contains the highly efficient Du-Cal desiccant. Storage Tank Vent Driers are efficient and economical to operate.

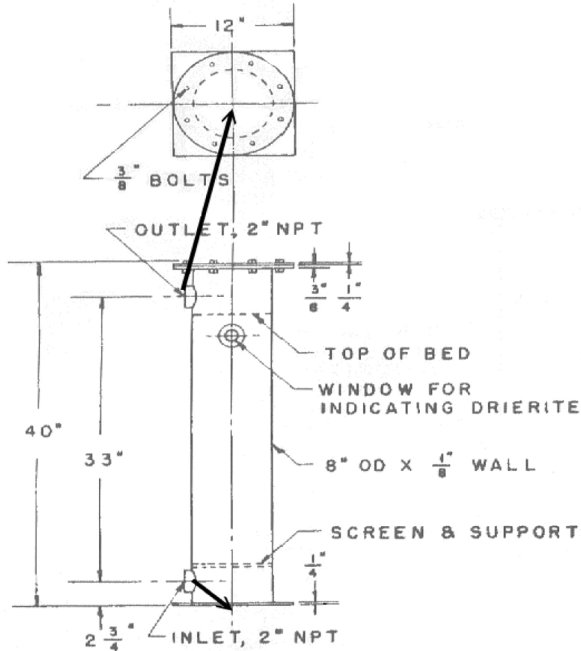


Specifications

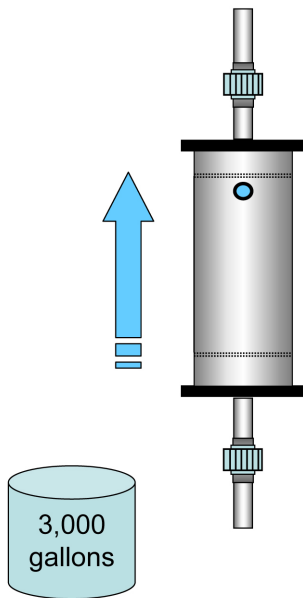
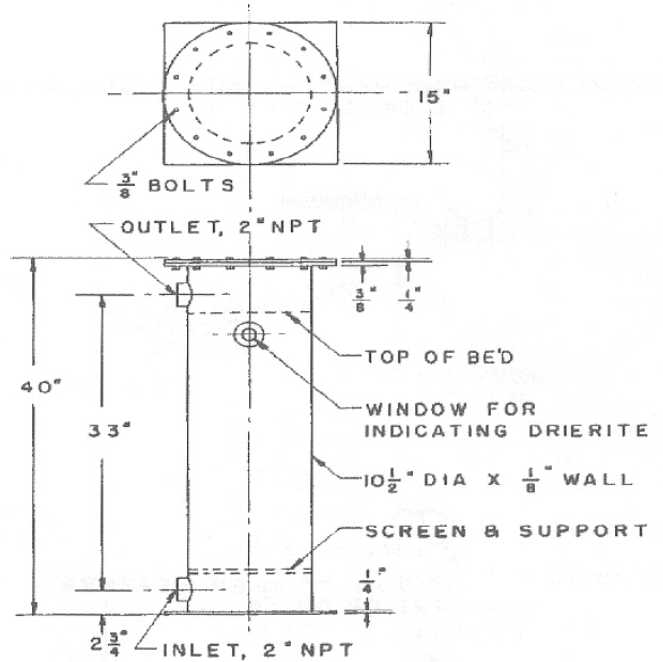
NEE #	Construction	Gasket Material	Maximum Pump Out Rate	Design Pump Out Rate	Water Capacity	DU-CAL DRIER-RITE (4 mesh)	Connections	Max. Working Pressure
105	Mild Steel	Non-Asbestos Composition	150 gpm (20 cfm)	75 gpm (10 cfm)	5 lb	50 lb	2" NPT	10 psi
1100			300 gpm (40 cfm)	150 gpm (20 cfm)	10 lb	100 lb		
1200			600 gpm (80 cfm)	300 gpm (40 cfm)	20 lb	200 lb	3" NPT	
1400			1200 gpm (160 cfm)	600 gpm (80 cfm)	40 lb	400 lb	4" NPT	

There is also a Model 1600 which is the maximum size for a housing based on Du-Cal density. The design flow rate is 120 CFM with maximum pump out rate (no more than 2 minutes) of 240 CFM or 1800 GPM. It removes 60 pounds of water and has a 4" NPT connection and maximum working pressure of 1 psi.

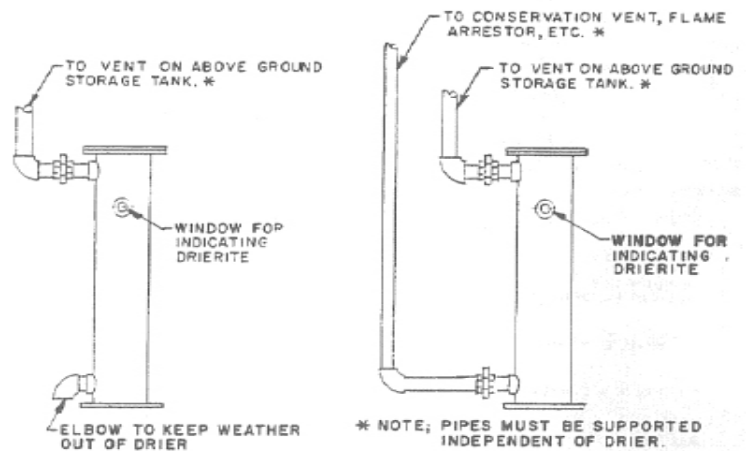
Model 105



Model 1100



Installation



STANDARD MODEL VENT DRIERS